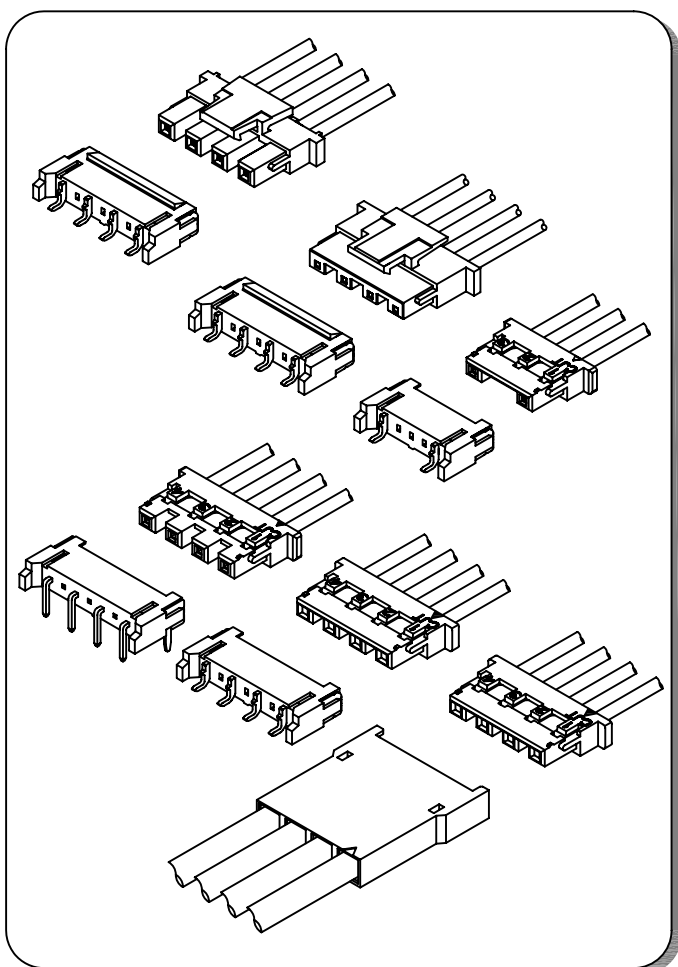


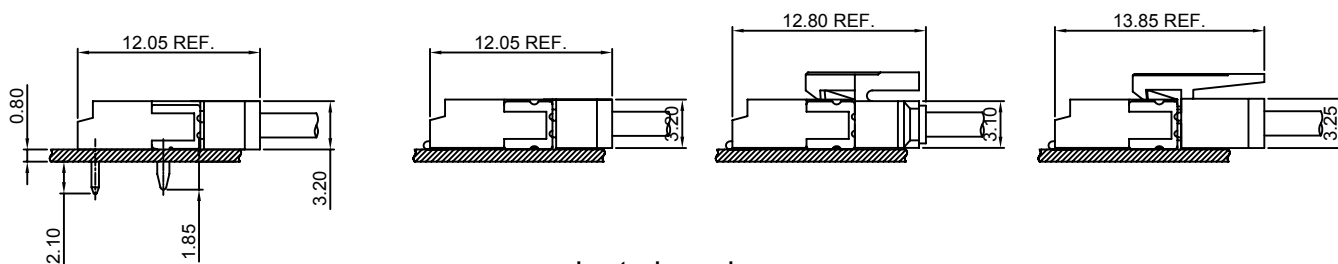
Specifications

- Current rating: 1A AC,DC
- Voltage rating: 600V AC,DC
- Temperature range: -40°C~+105°C
- Contact resistance: 10mΩMax.
- Insulation resistance: 1000MΩMin.
- Withstanding voltage: 1800V AC/minute
- *Compliant with RoHS and REACH*
- *Meet the HF/Halogen Free, GWT/Glow wire Test (IEC60335-1) request, need to customize*
- *Contact CJT for details*

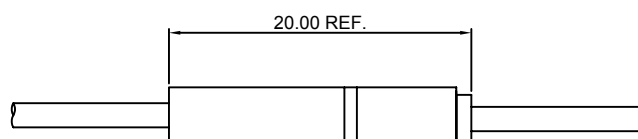
Standards



Assembly layout



wire to board



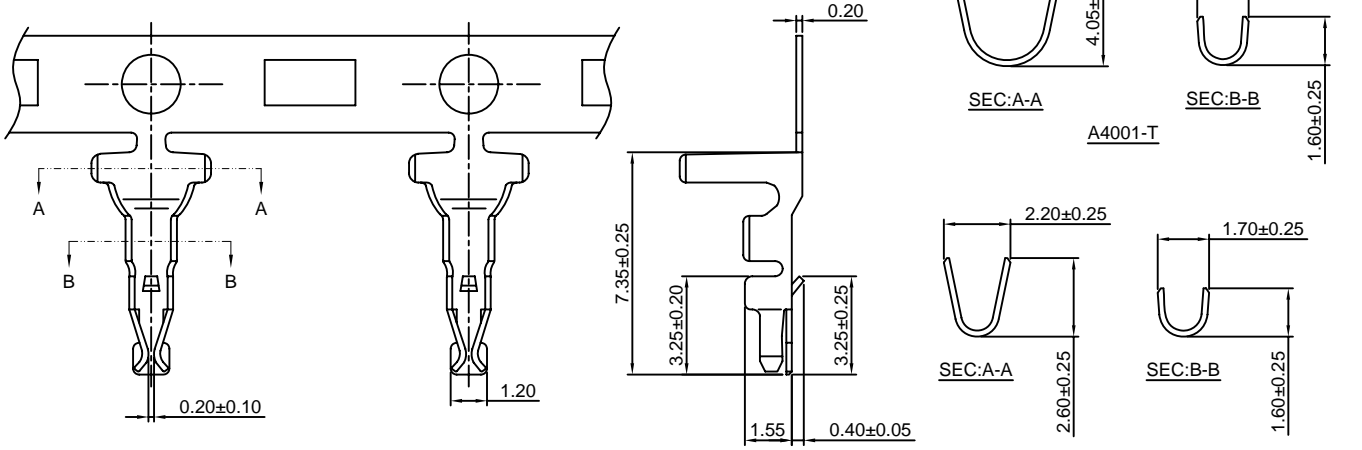
wire to wire

A4001-T

4.00mm pitch Crimp Terminal

Reference Informations:

*Used in CJT A4001H,HC-XP series Housing



A4001-T-L

Ordering information & Specifications:

Unit:mm

Part NO.	Wire Range	Insulation O.D.	Material	Finish	Qty/reel
A4001-TP	AWG#18-#22	3.00mm(max)	Phosphor Bronze	Tin over Nickel	5,000 PCS
A4001-GP	AWG#18-#22	3.00mm(max)	Phosphor Bronze	Gold over Nickel	5,000 PCS
A4001-TP-L	AWG#22-#28	1.60mm(max)	Phosphor Bronze	Tin over Nickel	8,000 PCS
A4001-GP-L	AWG#22-#28	1.60mm(max)	Phosphor Bronze	Gold over Nickel	8,000 PCS

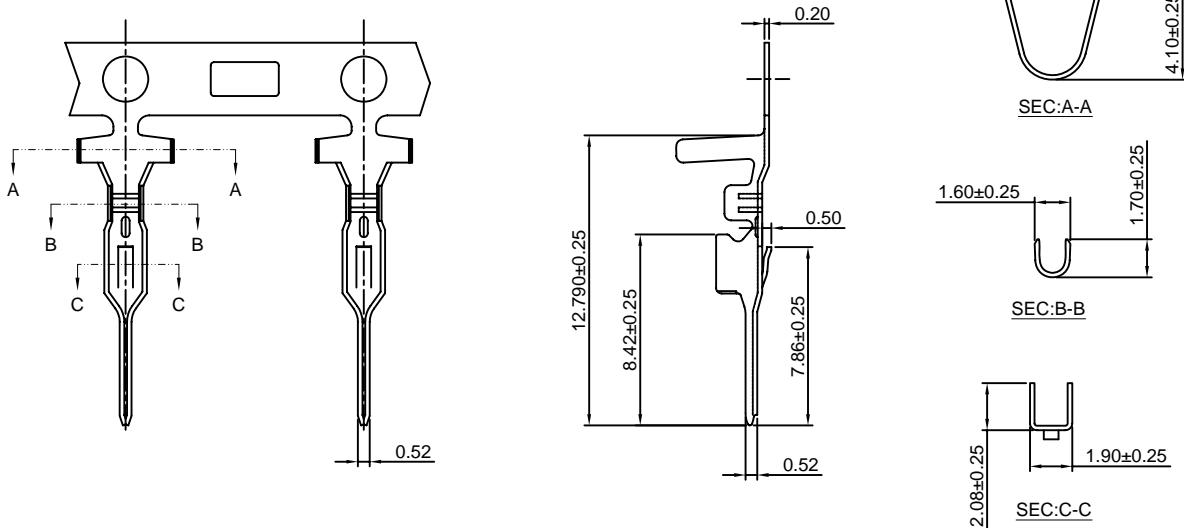
Optional Gold plating available but MOQ requested

A4001M-T

4.00mm pitch Crimp Terminal

Reference Informations:

*Used in CJT A4001HM-XP series Housing



Ordering information & Specifications:

Unit:mm

Part NO.	Wire Range	Insulation O.D.	Material	Finish	Qty/reel
A4001M-TP	AWG#22-#28	2.40mm(max)	Phosphor Bronze	Tin over Nickel	5,000 PCS
A4001M-GP	AWG#22-#28	2.40mm(max)	Phosphor Bronze	Gold over Nickel	5,000 PCS

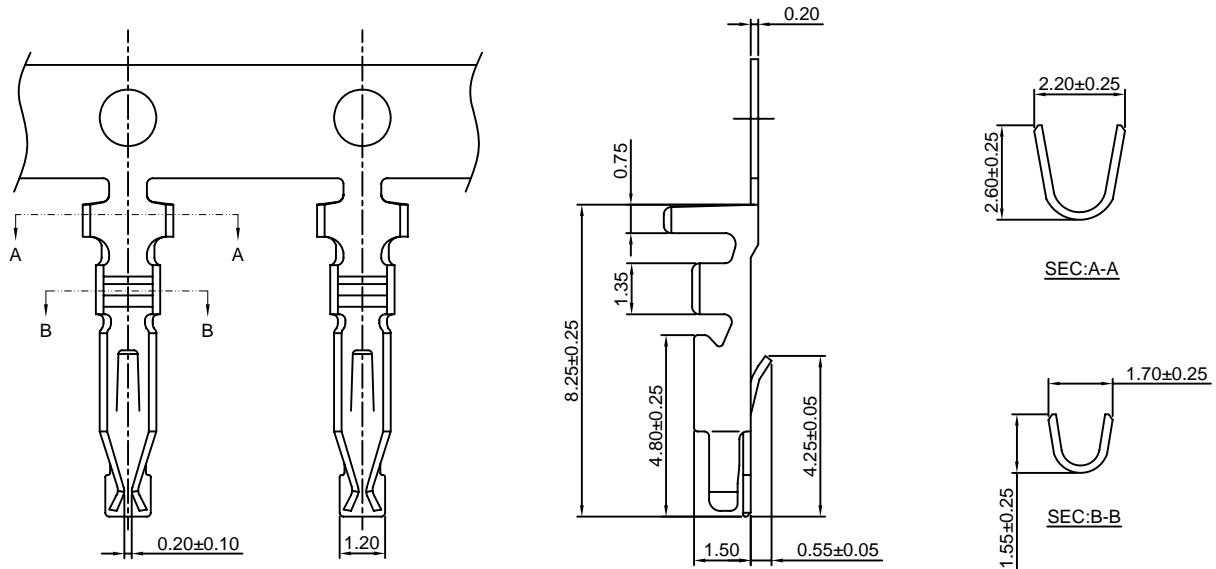
Optional Gold plating available but MOQ requested

A4001A-T

4.00mm pitch Crimp Terminal

Reference Informations:

*Used in CJT A4001HA,HB-XP series Housing



Ordering information & Specifications:

Unit:mm

Part NO.	Wire Range	Insulation O.D.	Material	Finish	Qty/reel
A4001A-TP	AWG#24-#28	1.60mm(max)	Phosphor Bronze	Tin over Nickel	10,000 PCS
A4001A-GP	AWG#24-#28	1.60mm(max)	Phosphor Bronze	Gold over Nickel	10,000 PCS

Optional Gold plating available but MOQ requested

A4001H-XP

4.00mm pitch Housing

Reference Informations:

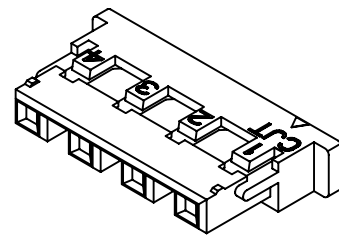
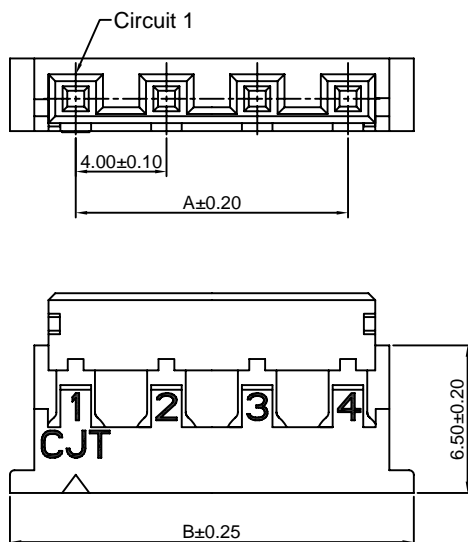
*Material:Nylon 66,UL94V-0

*Suitable CJT A4001-T series Terminal

*Mates with CJT A4001HM-XP series Housing

or A4001WR,WRA-XP,A4001WR-S,WRA-S-XP series Wafer

*Color:White



Ordering Information & Dimensions:

PART NO.	Dimensions	
	A	B
2P	4.00	9.80
3P	8.00	13.80
4P	12.00	17.80
5P	16.00	21.80

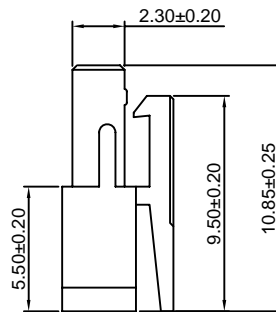
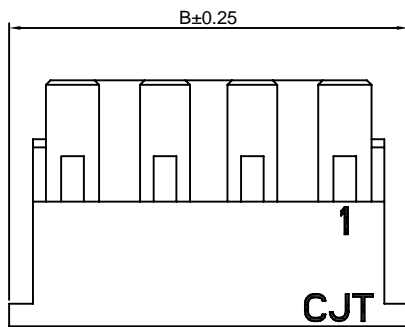
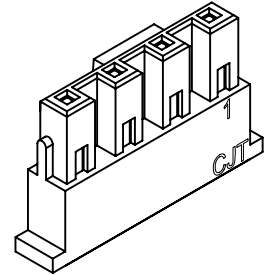
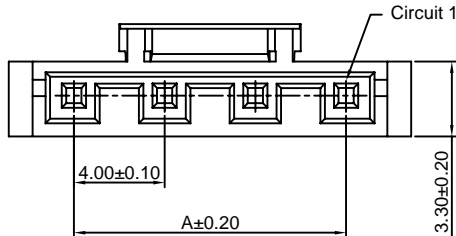
Unit: mm

A4001HA-XP

4.00mm pitch Housing

Reference Informations:

- *Material:Nylon 66,UL94V-0
- *Suitable CJT A4001A-T series Terminal
- *Mates with CJT A4001HMA-XP or A4001WRA-XP , A4001WRA-S-XP series Wafer
- *Color:White



Ordering Information & Dimensions:

PART NO.	Dimensions	
	A	B
2P	4.00	9.80
3P	8.00	13.80
4P	12.00	17.80
5P	16.00	21.80

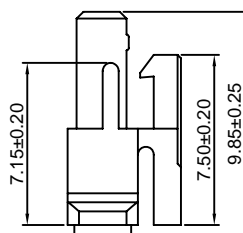
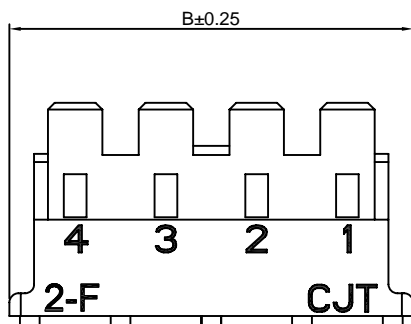
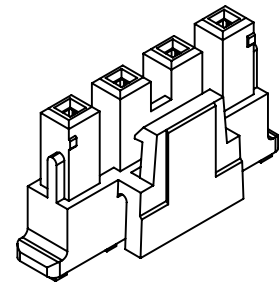
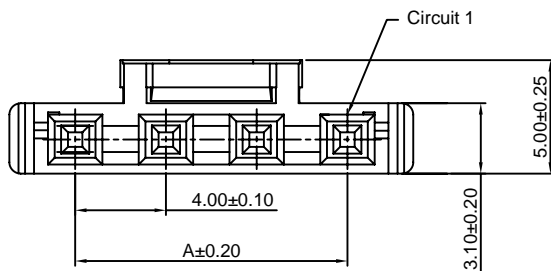
Unit: mm

A4001HB-XP

4.00mm pitch Housing

Reference Informations:

- *Material:Nylon 66,UL94V-0
- *Suitable CJT A4001A-T series Terminal
- *Mates with CJT A4001HMA-XP or A4001WRA-XP , A4001WRA-S-XP series Wafer
- *Color:White



Ordering Information & Dimensions:

PART NO.	Dimensions	
	A	B
2P	4.00	9.80
3P	8.00	13.80
4P	12.00	17.80
5P	16.00	21.80

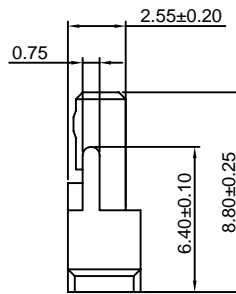
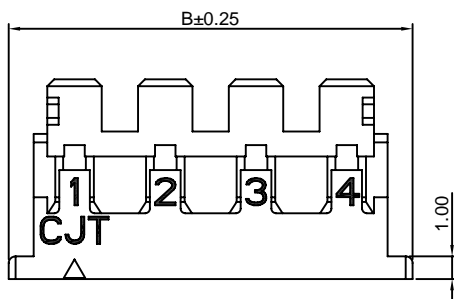
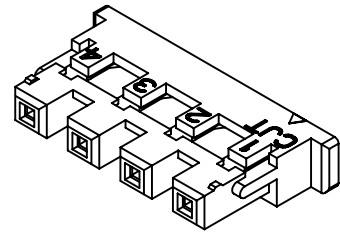
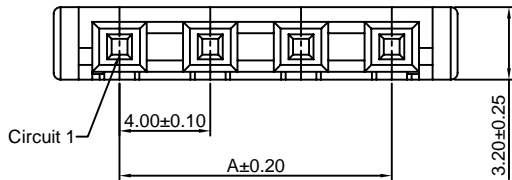
Unit: mm

A4001HC-XP

4.00mm pitch Housing

Reference Informations:

- *Material:Nylon 66,UL94V-0
- *Suitable CJT A4001-T series Terminal
- *Mates with CJT A4001HM-XP series Housing
- *Color:White



Ordering Information & Dimensions:

PART NO.	Dimensions	
	A	B
2P	4.00	9.80
3P	8.00	13.80
4P	12.00	17.80
5P	16.00	21.80

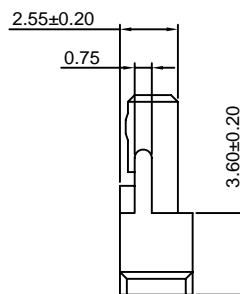
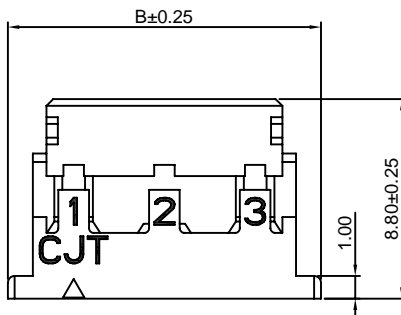
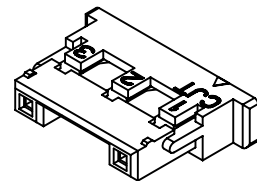
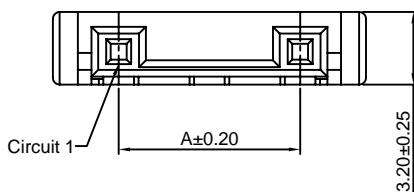
Unit: mm

A4001H-XP-A

4.00mm pitch Housing

Reference Informations:

- *Material:Nylon 66,UL94V-0
- *Suitable CJT A4001 series Terminal
- *Mates with CJT A4001HM series Housing
- *Color:White



Ordering Information & Dimensions:

PART NO.	Dimensions	
	A	B
3P	8.00	13.80
5P	16.00	21.80

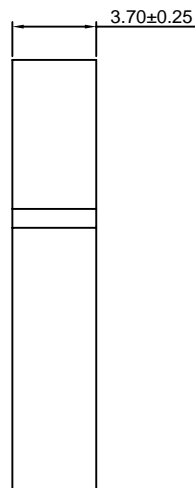
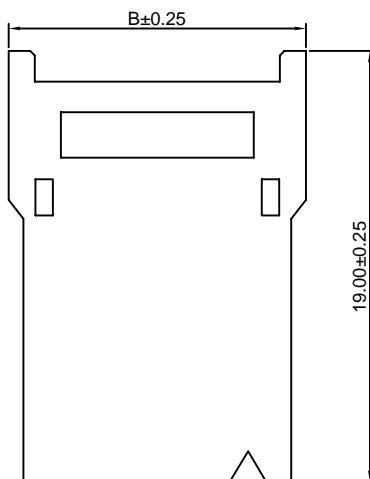
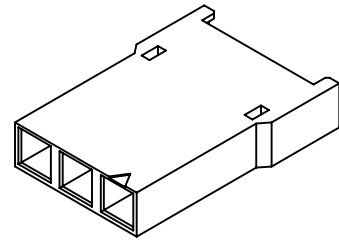
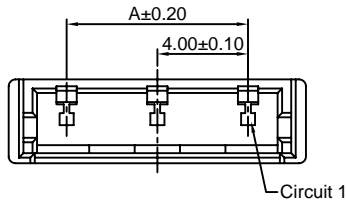
Unit: mm

A4001HM-XP

4.00mm pitch Housing

Reference Informations:

- *Material:Nylon 66,UL94V-0
- *Suitable CJT A4001M-T series Terminal
- *Mates with CJT A4001H,HC-XP,A4001H-XP-A series Housing
- *Color:White



Ordering Information & Dimensions:

PART NO.	Dimensions	
	A	B
2P	4.00	9.10
3P	8.00	13.10
4P	12.00	17.10
5P	16.00	21.10

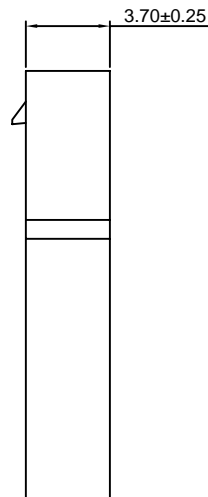
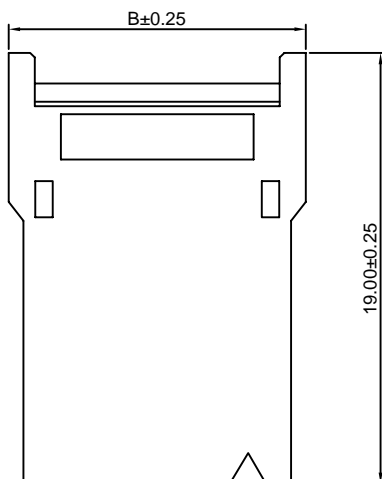
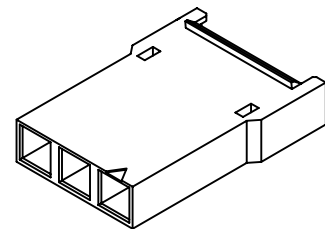
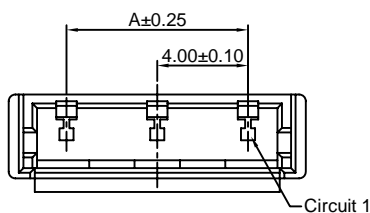
Unit: mm

A4001HMA-XP

4.00mm pitch Housing

Reference Informations:

- *Material:Nylon 66,UL94V-0
- *Suitable CJT A4001M-T series Terminal
- *Mates with CJT A4001HA,HB-XP series Housing
- *Color:White



Ordering Information & Dimensions:

PART NO.	Dimensions	
	A	B
2P	4.00	9.10
3P	8.00	13.10
4P	12.00	17.10
5P	16.00	21.10

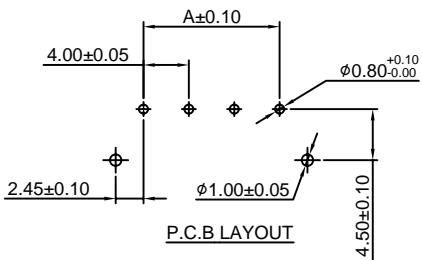
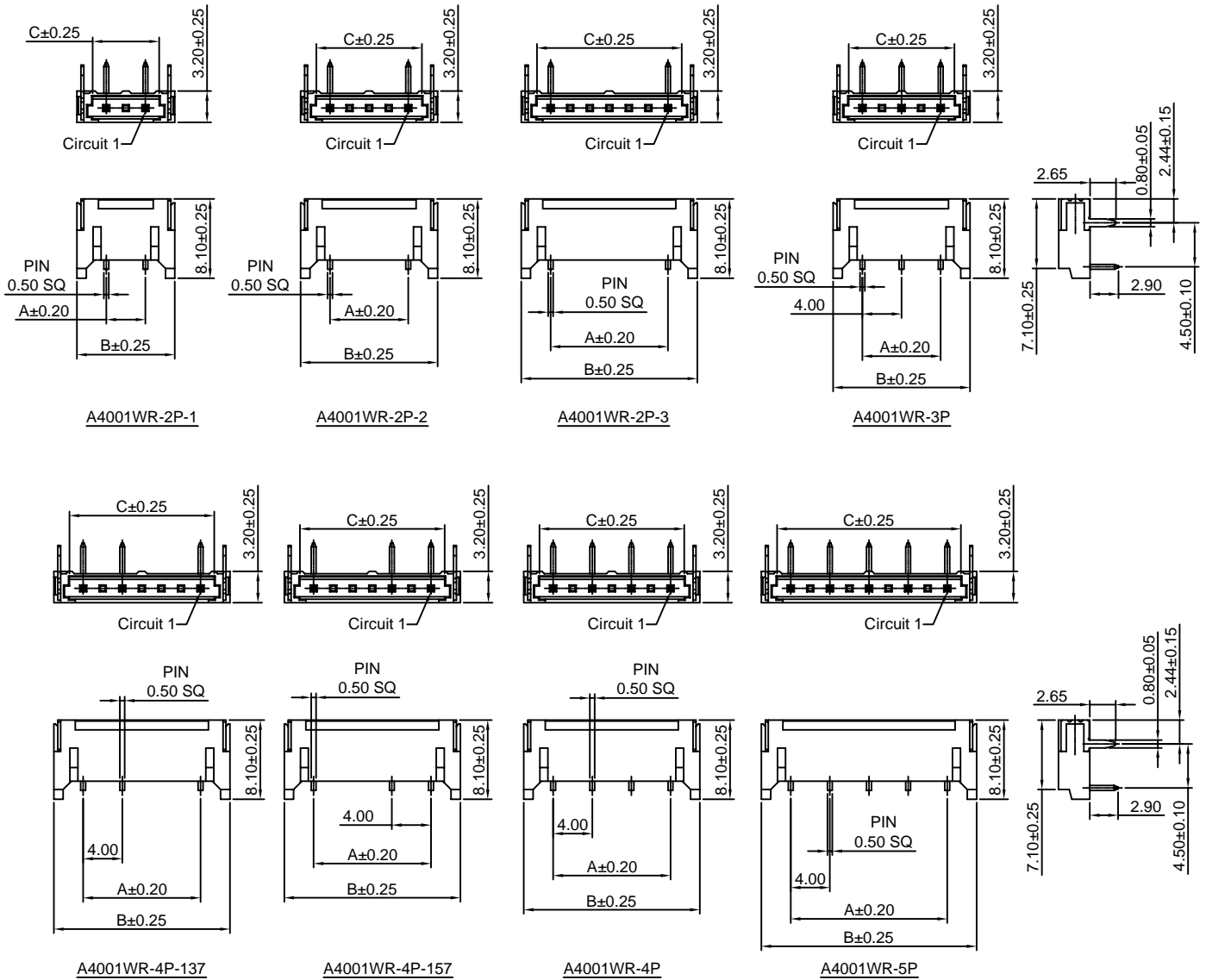
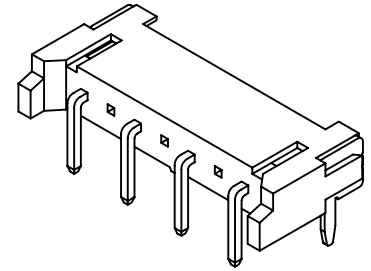
Unit: mm

A4001WR-XP

4.00mm pitch 90° Wafer-DIP TYPE

Reference Informations:

- *Material: Pin: Brass/Tin over Nickel
Solder Pin: Brass/Tin over Nickel
Insulator: Nylon 6T, UL94V-0
- *Mates with CJT A4001H-XP series Housing
- *Color: Beige



Ordering Information & Dimensions:

PART NO.	Dimensions		
	A	B	C
2P-1	4.00	10.00	6.80
2P-2	8.00	14.00	10.80
2P-3	12.00	18.00	14.80
3P	8.00	14.00	10.80
4P-137	12.00	18.00	14.80
4P-157	12.00	18.00	14.80
4P	12.00	18.00	14.80
5P	16.00	22.00	18.80

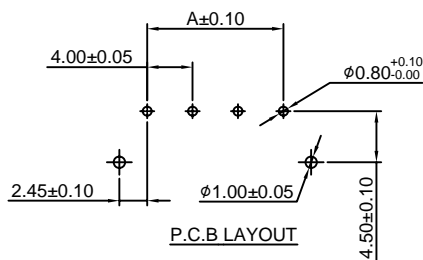
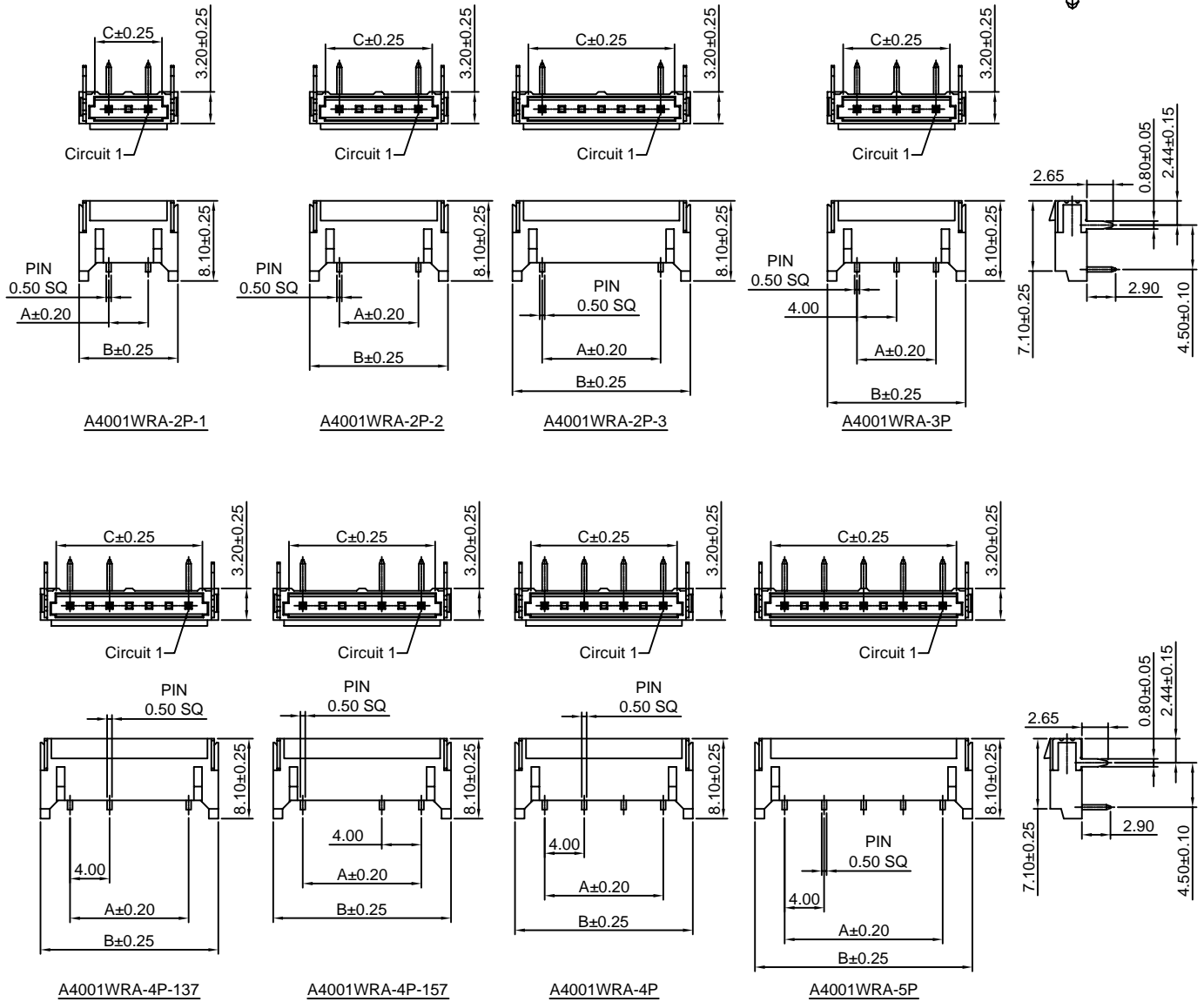
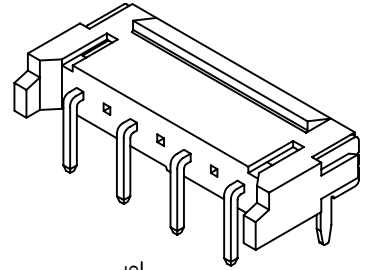
Unit: mm

A4001WRA-XP

4.00mm pitch 90° Wafer-DIP TYPE

Reference Informations:

- *Material: Pin: Brass/Tin over Nickel
Solder Pin: Brass/Tin over Nickel
Insulator: Nylon 6T, UL94V-0
- *Mates with CJT A4001HA, HB-XP series Housing
- *Color: Beige



Ordering Information & Dimensions:

PART NO.	Dimensions		
	A	B	C
2P-1	4.00	10.00	6.80
2P-2	8.00	14.00	10.80
2P-3	12.00	18.00	14.80
3P	8.00	14.00	10.80
4P-137	12.00	18.00	14.80
4P-157	12.00	18.00	14.80
4P	12.00	18.00	14.80
5P	16.00	22.00	18.80

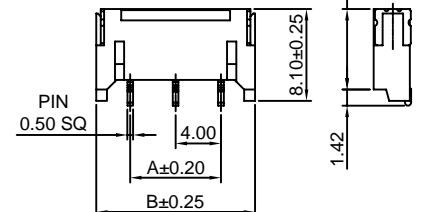
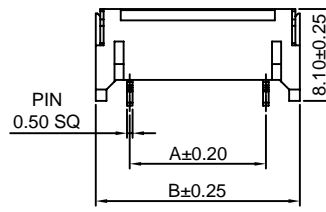
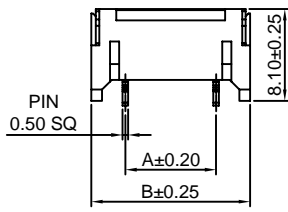
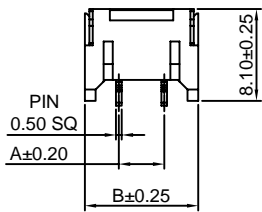
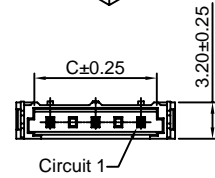
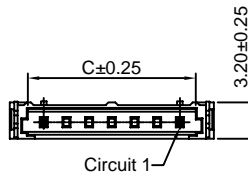
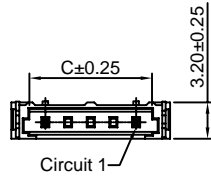
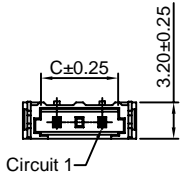
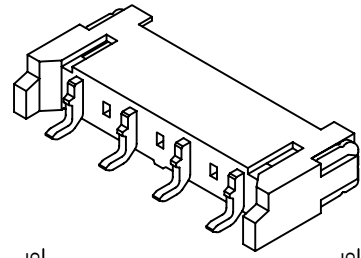
Unit: mm

A4001WR-S-XP

4.00mm pitch 90° Wafer-SMT TYPE

Reference Informations:

- *Material: Pin: Brass/Tin over Nickel
Solder Tabs: Brass/Tin over Nickel
Insulator: Nylon 6T, UL94V-0
- *Mates with CJT A4001H-XP series Housing
- *Color: Beige

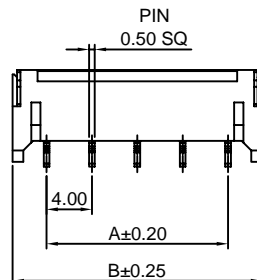
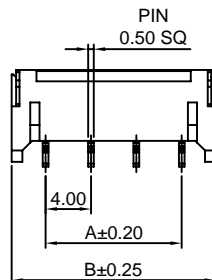
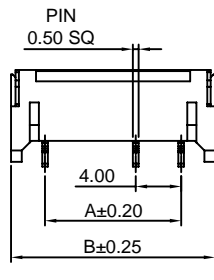
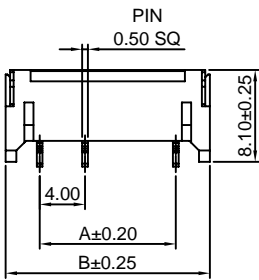
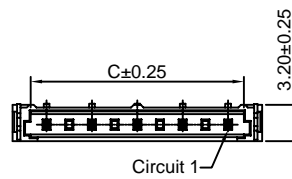
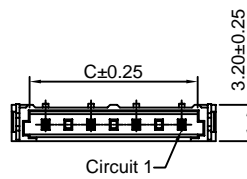
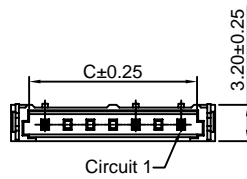
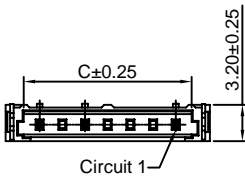


A4001WR-S-2P-1

A4001WR-S-2P-2

A4001WR-S-2P-3

A4001WR-S-3P

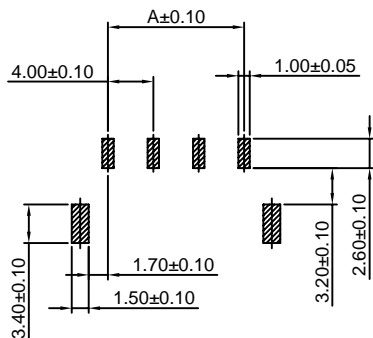


A4001WR-S-4P-137

A4001WR-S-4P-157

A4001WR-S-4P

A4001WR-S-5P



P.C.B LAYOUT

Ordering Information & Dimensions:

PART NO.	Dimensions		
	A	B	C
2P-1	4.00	10.00	6.80
2P-2	8.00	14.00	10.80
2P-3	12.00	18.00	14.80
3P	8.00	14.00	10.80
4P-137	12.00	18.00	14.80
4P-157	12.00	18.00	14.80
4P	12.00	18.00	14.80
5P	16.00	22.00	18.80

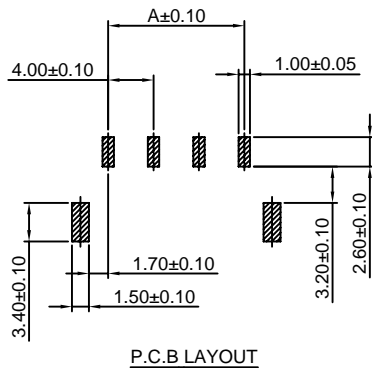
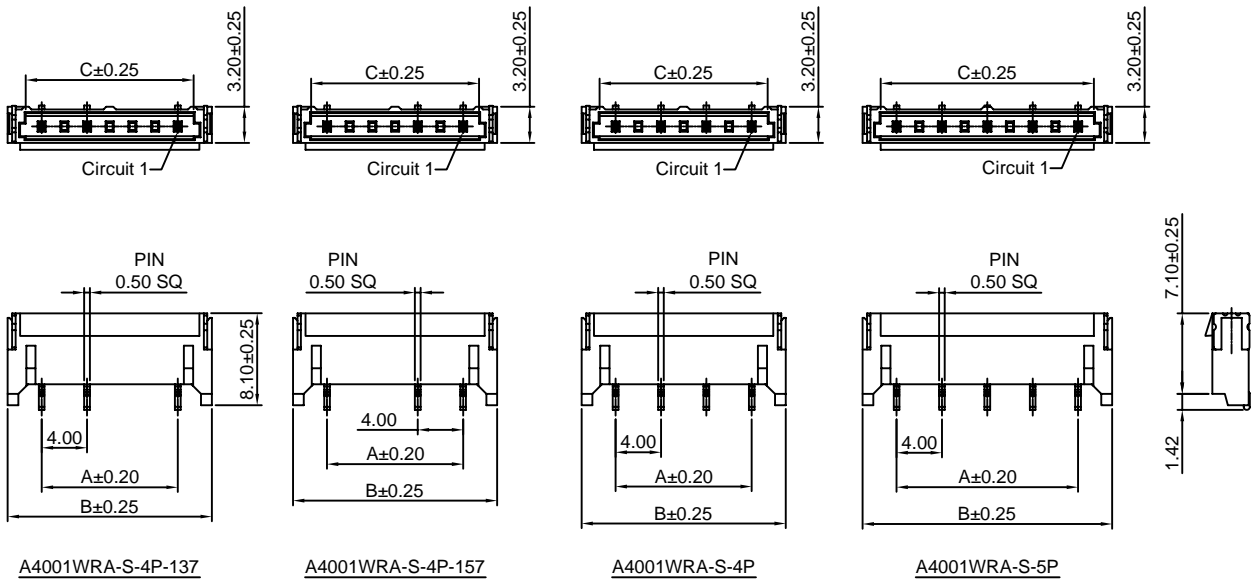
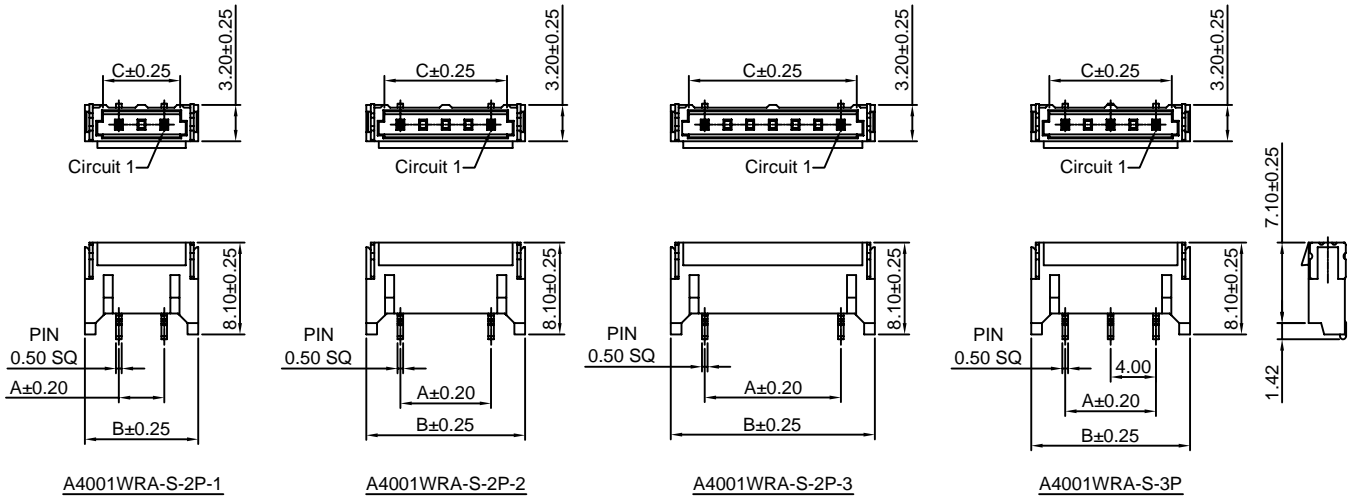
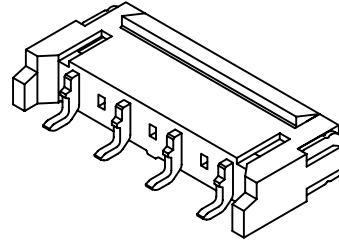
Unit: mm

A4001WRA-S-XP

4.00mm pitch 90° Wafer-SMT TYPE

Reference Informations:

- *Material: Pin: Brass/Tin over Nickel
Solder Tabs: Brass/Tin over Nickel
Insulator: Nylon 6T, UL94V-0
- *Mates with CJT A4001HA, HB-XP series Housing
- *Color: Beige



Ordering Information & Dimensions:

PART NO.	Dimensions		
	A	B	C
2P-1	4.00	10.00	6.80
2P-2	8.00	14.00	10.80
2P-3	12.00	18.00	14.80
3P	8.00	14.00	10.80
4P-137	12.00	18.00	14.80
4P-157	12.00	18.00	14.80
4P	12.00	18.00	14.80
5P	16.00	22.00	18.80

Unit: mm