

Specifications

Current rating:1A AC,DC

Voltage rating:30V AC,DC

Temperature range:-40°C~+105°C

Contact resistance:20mΩ Max.

Insulation resistance:1000MΩ Min.

Withstanding voltage:500V AC/minute

Compliant with RoHS and REACH

Meet the HF/Halogen Free,need to customize

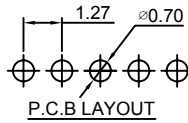
Contact CJT for details

A1276WV-XP

1.27mm Pitch 180° Single Row Pin Header

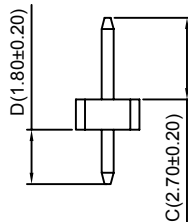
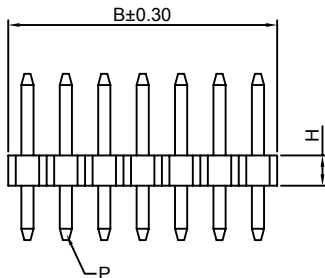
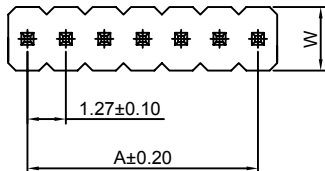
Reference Informations:

- *Material: Pin: Brass/Gold over Nickel
Insulator: Nylon 6T, UL94V-0
- *Mates with CJT A1276 series Single Row Female Header
Optional Gold plating available but MOQ requested
- *Color: Black



Ordering Information:
A1276WV-XP - *** - *** - ***
1 2 3 4

1. Part No.
2. Size (H):
(Blank): 1.00mm (W: 2.00mm, P: Pin 0.40SQ)
H15: 1.50mm (W: 2.40mm, P: Pin 0.40SQ)
H17: 1.70mm (W: 2.40mm, P: Pin 0.46SQ)
H20: 2.00mm (W: 2.50mm, P: Pin 0.40SQ)
H25: 2.50mm (W: 2.50mm, P: Pin 0.40SQ)
3. Material:
(Blank): Nylon 6T, UL94V-0
GWT: Nylon 6T, UL94V-0, GWT 750 °C
4. Finish:
(blank): Gold-flash
G15: 15µm (0.38µm) MIN. Select Gold (Mating Area)
100µm (2.54µm) MIN. Select Tin
G30: 30µm (0.76µm) MIN. Select Gold (Mating Area)
100µm (2.54µm) MIN. Select Tin
T: Tin over Nickel



Ordering Information & Dimensions:

PART NO.	Dimensions		PART NO.	Dimensions	
	A	B		A	B
1P	----	1.27	26P	31.75	33.02
2P	1.27	2.54	27P	33.02	34.29
3P	2.54	3.81	28P	34.29	35.56
4P	3.81	5.08	29P	35.56	36.83
5P	5.08	6.35	30P	36.83	38.10
6P	6.35	7.62	31P	38.10	39.37
7P	7.62	8.89	32P	39.37	40.64
8P	8.89	10.16	33P	40.64	41.91
9P	10.16	11.43	34P	41.91	43.18
10P	11.43	12.70	35P	43.18	44.45
11P	12.70	13.97	36P	44.45	45.72
12P	13.97	15.24	37P	45.72	46.99
13P	15.24	16.51	38P	46.99	48.26
14P	16.51	17.78	39P	48.26	49.53
15P	17.78	19.05	40P	49.53	50.80
16P	19.05	20.32	41P	50.80	52.07
17P	20.32	21.59	42P	52.07	53.34
18P	21.59	22.86	43P	53.34	54.61
19P	22.86	24.13	44P	54.61	55.88
20P	24.13	25.40	45P	55.88	57.15
21P	25.40	26.67	46P	57.15	58.42
22P	26.67	27.94	47P	58.42	59.69
23P	27.94	29.21	48P	59.69	60.96
24P	29.21	30.48	49P	60.96	62.23
25P	30.48	31.75	50P	62.23	63.50

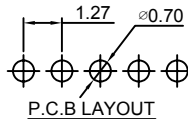
Unit: mm

A1276WR-XP

1.27mm Pitch 90° Single Row Pin Header

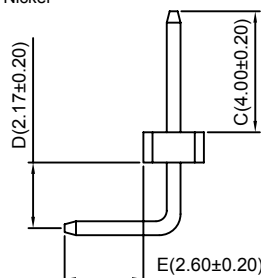
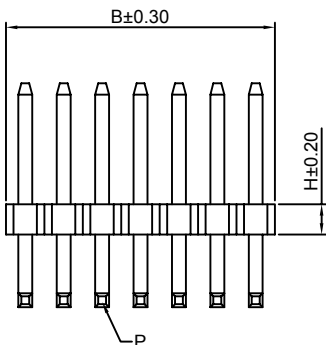
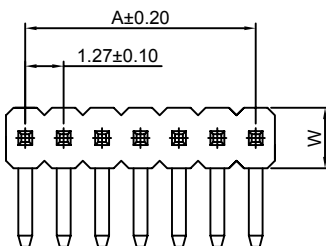
Reference Informations:

- *Material: Pin: Brass/Gold over Nickel
Insulator: Nylon 6T, UL94V-0
- *Mates with CJT A1276 series Single Row Female Header
Optional Gold plating available but MOQ requested
- *Color: Black



Ordering Information:
A1276WR-XP - *** - *** - ***
1 2 3 4

1. Part No.
2. Size (H):
(Blank): 1.00mm (W: 2.00mm, P: Pin 0.40SQ)
H15: 1.50mm (W: 2.40mm, P: Pin 0.40SQ)
H17: 1.70mm (W: 2.40mm, P: Pin 0.46SQ)
H20: 2.00mm (W: 2.50mm, P: Pin 0.40SQ)
H25: 2.50mm (W: 2.50mm, P: Pin 0.40SQ)
3. Material:
(Blank): Nylon 6T, UL94V-0
GWT: Nylon 6T, UL94V-0, GWT 750 °C
4. Finish:
(blank): Gold-flash
G15: 15µm (0.38µm) MIN. Select Gold (Mating Area)
100µm (2.54µm) MIN. Select Tin
G30: 30µm (0.76µm) MIN. Select Gold (Mating Area)
100µm (2.54µm) MIN. Select Tin
T: Tin over Nickel



Ordering Information & Dimensions:

PART NO.	Dimensions		PART NO.	Dimensions	
	A	B		A	B
1P	----	1.27	26P	31.75	33.02
2P	1.27	2.54	27P	33.02	34.29
3P	2.54	3.81	28P	34.29	35.56
4P	3.81	5.08	29P	35.56	36.83
5P	5.08	6.35	30P	36.83	38.10
6P	6.35	7.62	31P	38.10	39.37
7P	7.62	8.89	32P	39.37	40.64
8P	8.89	10.16	33P	40.64	41.91
9P	10.16	11.43	34P	41.91	43.18
10P	11.43	12.70	35P	43.18	44.45
11P	12.70	13.97	36P	44.45	45.72
12P	13.97	15.24	37P	45.72	46.99
13P	15.24	16.51	38P	46.99	48.26
14P	16.51	17.78	39P	48.26	49.53
15P	17.78	19.05	40P	49.53	50.80
16P	19.05	20.32	41P	50.80	52.07
17P	20.32	21.59	42P	52.07	53.34
18P	21.59	22.86	43P	53.34	54.61
19P	22.86	24.13	44P	54.61	55.88
20P	24.13	25.40	45P	55.88	57.15
21P	25.40	26.67	46P	57.15	58.42
22P	26.67	27.94	47P	58.42	59.69
23P	27.94	29.21	48P	59.69	60.96
24P	29.21	30.48	49P	60.96	62.23
25P	30.48	31.75	50P	62.23	63.50

Unit: mm

A1276WR-XP-R

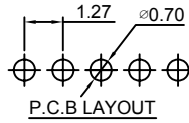
1.27mm Pitch 90° Single Row Pin Header

Reference Informations:

*Material:Pin:Brass/Gold over Nickel
Insulator:Nylon 6T,UL94V-0

*Mates with CJT A1276 series Single Row Female Header
Optional Gold plating available but MOQ requested

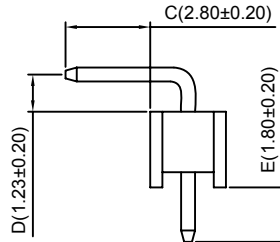
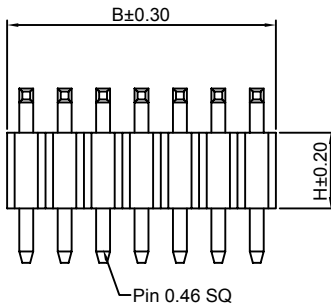
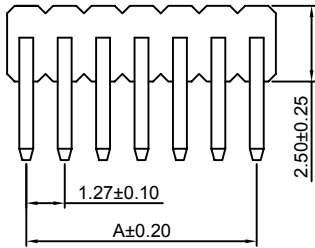
*Color:Black



Ordering Information:

A1276WR-XP-R - *** - *** - ***
1 2 3 4

- 1.Part No.
2. Size(H):
(Blank):2.50mm
H17:1.70mm
- 3.Material:
(Blank):Nylon 6T,UL94V-0
GWT:Nylon 6T,UL94V-0,GWT 750 °C
- 4.Finish:
(blank):Gold-flash
G15:15µin (0.38µm) MIN.Select Gold(Mating Area)
100µin (2.54µm) MIN.Select Tin
G30:30µin (0.76µm) MIN.Select Gold(Mating Area)
100µin (2.54µm) MIN.Select Tin
I: Tin over Nickel



Ordering Information & Dimensions:

PART NO.	Dimensions		PART NO.	Dimensions	
	A	B		A	B
1P	----	1.27	26P	31.75	33.02
2P	1.27	2.54	27P	33.02	34.29
3P	2.54	3.81	28P	34.29	35.56
4P	3.81	5.08	29P	35.56	36.83
5P	5.08	6.35	30P	36.83	38.10
6P	6.35	7.62	31P	38.10	39.37
7P	7.62	8.89	32P	39.37	40.64
8P	8.89	10.16	33P	40.64	41.91
9P	10.16	11.43	34P	41.91	43.18
10P	11.43	12.70	35P	43.18	44.45
11P	12.70	13.97	36P	44.45	45.72
12P	13.97	15.24	37P	45.72	46.99
13P	15.24	16.51	38P	46.99	48.26
14P	16.51	17.78	39P	48.26	49.53
15P	17.78	19.05	40P	49.53	50.80
16P	19.05	20.32	41P	50.80	52.07
17P	20.32	21.59	42P	52.07	53.34
18P	21.59	22.86	43P	53.34	54.61
19P	22.86	24.13	44P	54.61	55.88
20P	24.13	25.40	45P	55.88	57.15
21P	25.40	26.67	46P	57.15	58.42
22P	26.67	27.94	47P	58.42	59.69
23P	27.94	29.21	48P	59.69	60.96
24P	29.21	30.48	49P	60.96	62.23
25P	30.48	31.75	50P	62.23	63.50

Unit: mm

A1276WVA-XP

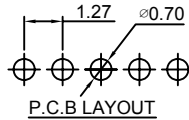
1.27mm Pitch 180° Single Row Pin Header

Reference Informations:

*Material:Pin:Brass/Gold over Nickel
Insulator:Nylon 6T,UL94V-0

*Mates with CJT A1276 series Single Row Female Header
Optional Gold plating available but MOQ requested

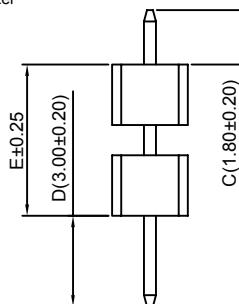
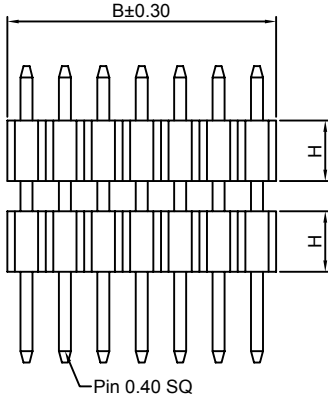
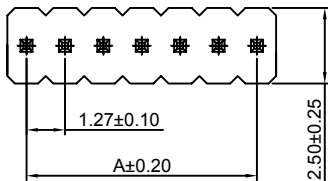
*Color:Black



Ordering Information:

A1276WVA-XP - *** - *** - ***
1 2 3 4

- 1.Part No.
2. Size(H):
(Blank):1.00mm
H15:1.50mm
H17:1.70mm
H20:2.00mm
H25:2.50mm
- 3.Material:
(Blank):Nylon 6T,UL94V-0
GWT:Nylon 6T,UL94V-0,GWT 750 °C
- 4.Finish:
(blank):Gold-flash
G15:15µin (0.38µm) MIN.Select Gold(Mating Area)
100µin (2.54µm) MIN.Select Tin
G30:30µin (0.76µm) MIN.Select Gold(Mating Area)
100µin (2.54µm) MIN.Select Tin
I: Tin over Nickel



Ordering Information & Dimensions:

PART NO.	Dimensions		PART NO.	Dimensions	
	A	B		A	B
1P	----	1.27	26P	31.75	33.02
2P	1.27	2.54	27P	33.02	34.29
3P	2.54	3.81	28P	34.29	35.56
4P	3.81	5.08	29P	35.56	36.83
5P	5.08	6.35	30P	36.83	38.10
6P	6.35	7.62	31P	38.10	39.37
7P	7.62	8.89	32P	39.37	40.64
8P	8.89	10.16	33P	40.64	41.91
9P	10.16	11.43	34P	41.91	43.18
10P	11.43	12.70	35P	43.18	44.45
11P	12.70	13.97	36P	44.45	45.72
12P	13.97	15.24	37P	45.72	46.99
13P	15.24	16.51	38P	46.99	48.26
14P	16.51	17.78	39P	48.26	49.53
15P	17.78	19.05	40P	49.53	50.80
16P	19.05	20.32	41P	50.80	52.07
17P	20.32	21.59	42P	52.07	53.34
18P	21.59	22.86	43P	53.34	54.61
19P	22.86	24.13	44P	54.61	55.88
20P	24.13	25.40	45P	55.88	57.15
21P	25.40	26.67	46P	57.15	58.42
22P	26.67	27.94	47P	58.42	59.69
23P	27.94	29.21	48P	59.69	60.96
24P	29.21	30.48	49P	60.96	62.23
25P	30.48	31.75	50P	62.23	63.50

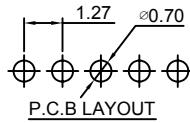
Unit: mm

A1276WRA-XP

1.27mm Pitch 90° Single Row Pin Header

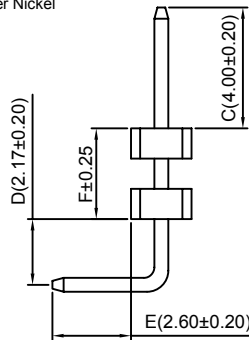
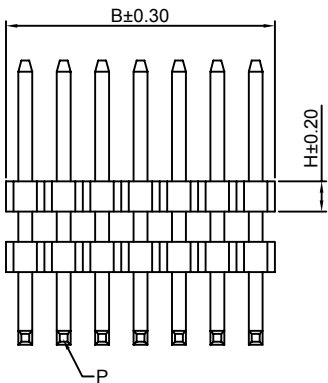
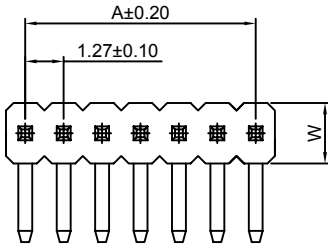
Reference Informations:

- *Material: Pin: Brass/Gold over Nickel
Insulator: Nylon 6T, UL94V-0
- *Mates with CJT A1276 series Single Row Female Header
- Optional Gold plating available but MOQ requested
- *Color: Black



Ordering Information:
A1276WRA-XP - *** - *** - ***

1. Part No.
2. Size(H):
(Blank): 1.00mm(W:2.10mm, P: Pin 0.40 SQ)
H15: 1.50mm(W:2.40mm, P: Pin 0.40 SQ)
H17: 1.70mm(W:2.50mm, P: Pin 0.46 SQ)
H20: 2.00mm(W:2.50mm, P: Pin 0.40 SQ)
H25: 2.50mm(W:2.50mm, P: Pin 0.40 SQ)
3. Material:
(Blank): Nylon 6T, UL94V-0
GWT: Nylon 6T, UL94V-0, GWT 750 °C
4. Finish:
(blank): Gold-flash
G15: 15µm (0.38µm) MIN. Select Gold (Mating Area)
100µm (2.54µm) MIN. Select Tin
G30: 30µm (0.76µm) MIN. Select Gold (Mating Area)
100µm (2.54µm) MIN. Select Tin
T: Tin over Nickel



Ordering Information & Dimensions:

PART NO.	Dimensions		PART NO.	Dimensions	
	A	B		A	B
1P	---	1.27	26P	31.75	33.02
2P	1.27	2.54	27P	33.02	34.29
3P	2.54	3.81	28P	34.29	35.56
4P	3.81	5.08	29P	35.56	36.83
5P	5.08	6.35	30P	36.83	38.10
6P	6.35	7.62	31P	38.10	39.37
7P	7.62	8.89	32P	39.37	40.64
8P	8.89	10.16	33P	40.64	41.91
9P	10.16	11.43	34P	41.91	43.18
10P	11.43	12.70	35P	43.18	44.45
11P	12.70	13.97	36P	44.45	45.72
12P	13.97	15.24	37P	45.72	46.99
13P	15.24	16.51	38P	46.99	48.26
14P	16.51	17.78	39P	48.26	49.53
15P	17.78	19.05	40P	49.53	50.80
16P	19.05	20.32	41P	50.80	52.07
17P	20.32	21.59	42P	52.07	53.34
18P	21.59	22.86	43P	53.34	54.61
19P	22.86	24.13	44P	54.61	55.88
20P	24.13	25.40	45P	55.88	57.15
21P	25.40	26.67	46P	57.15	58.42
22P	26.67	27.94	47P	58.42	59.69
23P	27.94	29.21	48P	59.69	60.96
24P	29.21	30.48	49P	60.96	62.23
25P	30.48	31.75	50P	62.23	63.50

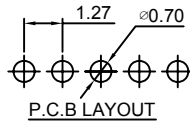
Unit: mm

A1276WRC-XP

1.27mm Pitch 90° Single Row Pin Header

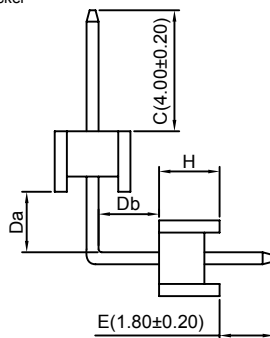
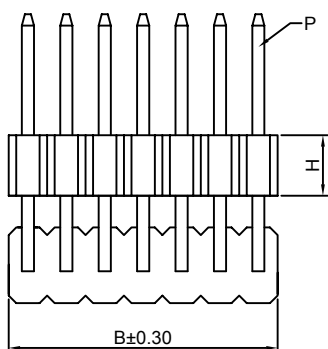
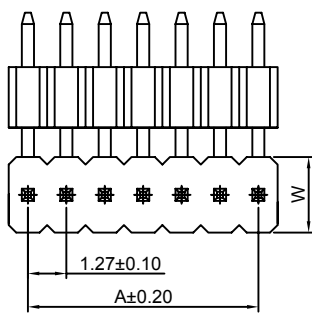
Reference Informations:

- *Material: Pin: Brass/Gold over Nickel
Insulator: Nylon 6T, UL94V-0
- *Mates with CJT A1276 series Single Row Female Header
- Optional Gold plating available but MOQ requested
- *Color: Black



Ordering Information:
A1276WRC-XP - *** - *** - ***

1. Part No.
2. Size(H):
(Blank): 1.00mm(W:2.10mm, P: Pin 0.40 SQ)
H15: 1.50mm(W:2.40mm, P: Pin 0.40 SQ)
H17: 1.70mm(W:2.50mm, P: Pin 0.46 SQ)
H20: 2.00mm(W:2.50mm, P: Pin 0.40 SQ)
H25: 2.50mm(W:2.50mm, P: Pin 0.40 SQ)
3. Material:
(Blank): Nylon 6T, UL94V-0
GWT: Nylon 6T, UL94V-0, GWT 750 °C
4. Finish:
(blank): Gold-flash
G15: 15µm (0.38µm) MIN. Select Gold (Mating Area)
100µm (2.54µm) MIN. Select Tin
G30: 30µm (0.76µm) MIN. Select Gold (Mating Area)
100µm (2.54µm) MIN. Select Tin
T: Tin over Nickel



Ordering Information & Dimensions:

PART NO.	Dimensions		PART NO.	Dimensions	
	A	B		A	B
1P	---	1.27	26P	31.75	33.02
2P	1.27	2.54	27P	33.02	34.29
3P	2.54	3.81	28P	34.29	35.56
4P	3.81	5.08	29P	35.56	36.83
5P	5.08	6.35	30P	36.83	38.10
6P	6.35	7.62	31P	38.10	39.37
7P	7.62	8.89	32P	39.37	40.64
8P	8.89	10.16	33P	40.64	41.91
9P	10.16	11.43	34P	41.91	43.18
10P	11.43	12.70	35P	43.18	44.45
11P	12.70	13.97	36P	44.45	45.72
12P	13.97	15.24	37P	45.72	46.99
13P	15.24	16.51	38P	46.99	48.26
14P	16.51	17.78	39P	48.26	49.53
15P	17.78	19.05	40P	49.53	50.80
16P	19.05	20.32	41P	50.80	52.07
17P	20.32	21.59	42P	52.07	53.34
18P	21.59	22.86	43P	53.34	54.61
19P	22.86	24.13	44P	54.61	55.88
20P	24.13	25.40	45P	55.88	57.15
21P	25.40	26.67	46P	57.15	58.42
22P	26.67	27.94	47P	58.42	59.69
23P	27.94	29.21	48P	59.69	60.96
24P	29.21	30.48	49P	60.96	62.23
25P	30.48	31.75	50P	62.23	63.50

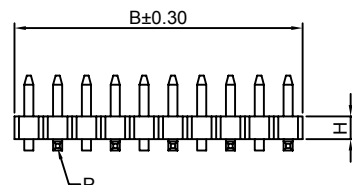
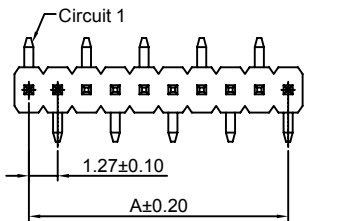
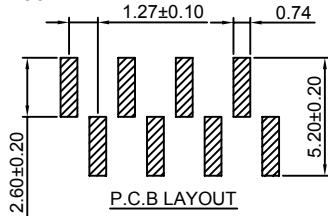
Unit: mm

A1276WV-S-XP-A

1.27mm Pitch 180° Single Row Pin Header - SMT A TYPE

Reference Informations:

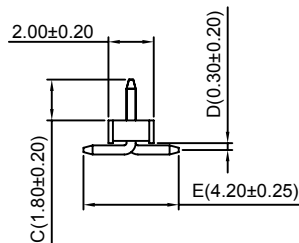
- *Material: Pin: Brass/Gold over Nickel
Insulator: Nylon 6T, UL94V-0
- *Mates with CJT A1276 series Single Row Female Header
Optional Gold plating available but MOQ requested
- *Color: Black



Ordering Information:

A1276WV-S-XP-A - *** - *** - *** - ***
1 2 3 4 5

- Part No.
- Size(H):
(Blank): 1.00mm
H15: 1.50mm
H20: 2.00mm
H25: 2.50mm
- Size(P):
(Blank): Pin 0.40 SQ
P46: Pin 0.46 SQ
- Material:
(Blank): Nylon 6T, UL94V-0
GWT: Nylon 6T, UL94V-0, GWT 750 °C
- Finish:
(blank): Gold-flash
G15: 15µin (0.38µm) MIN. Select Gold (Mating Area)
100µin (2.54µm) MIN. Select Tin
G30: 30µin (0.76µm) MIN. Select Gold (Mating Area)
100µin (2.54µm) MIN. Select Tin
T: Tin over Nickel



Ordering Information & Dimensions:

PART NO.	Dimensions		PART NO.	Dimensions	
	A	B		A	B
2P	1.27	2.54	27P	33.02	34.29
3P	2.54	3.81	28P	34.29	35.56
4P	3.81	5.08	29P	35.56	36.83
5P	5.08	6.35	30P	36.83	38.10
6P	6.35	7.62	31P	38.10	39.37
7P	7.62	8.89	32P	39.37	40.64
8P	8.89	10.16	33P	40.64	41.91
9P	10.16	11.43	34P	41.91	43.18
10P	11.43	12.70	35P	43.18	44.45
11P	12.70	13.97	36P	44.45	45.72
12P	13.97	15.24	37P	45.72	46.99
13P	15.24	16.51	38P	46.99	48.26
14P	16.51	17.78	39P	48.26	49.53
15P	17.78	19.05	40P	49.53	50.80
16P	19.05	20.32	41P	50.80	52.07
17P	20.32	21.59	42P	52.07	53.34
18P	21.59	22.86	43P	53.34	54.61
19P	22.86	24.13	44P	54.61	55.88
20P	24.13	25.40	45P	55.88	57.15
21P	25.40	26.67	46P	57.15	58.42
22P	26.67	27.94	47P	58.42	59.69
23P	27.94	29.21	48P	59.69	60.96
24P	29.21	30.48	49P	60.96	62.23
25P	30.48	31.75	50P	62.23	63.50
26P	31.75	33.02			

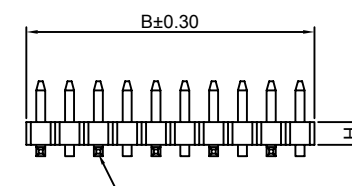
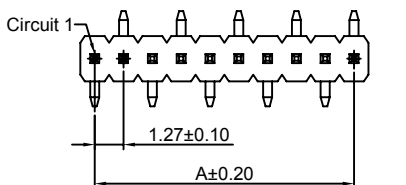
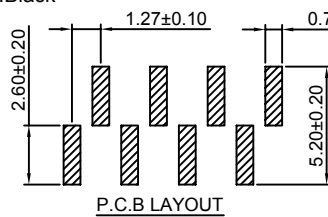
Unit: mm

A1276WV-S-XP-B

1.27mm Pitch 180° Single Row Pin Header - SMT B TYPE

Reference Informations:

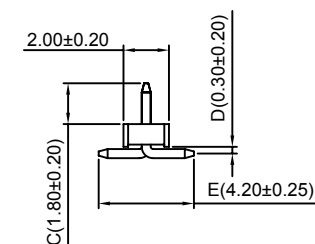
- *Material: Pin: Brass/Gold over Nickel
Insulator: Nylon 6T, UL94V-0
- *Mates with CJT A1276 series Single Row Female Header
Optional Gold plating available but MOQ requested
- *Color: Black



Ordering Information:

A1276WV-S-XP-B - *** - *** - *** - ***
1 2 3 4 5

- Part No.
- Size(H):
(Blank): 1.00mm
H15: 1.50mm
H20: 2.00mm
H25: 2.50mm
- Size(P):
(Blank): Pin 0.40 SQ
P46: Pin 0.46 SQ
- Material:
(Blank): Nylon 6T, UL94V-0
GWT: Nylon 6T, UL94V-0, GWT 750 °C
- Finish:
(blank): Gold-flash
G15: 15µin (0.38µm) MIN. Select Gold (Mating Area)
100µin (2.54µm) MIN. Select Tin
G30: 30µin (0.76µm) MIN. Select Gold (Mating Area)
100µin (2.54µm) MIN. Select Tin
T: Tin over Nickel



Ordering Information & Dimensions:

PART NO.	Dimensions		PART NO.	Dimensions	
	A	B		A	B
2P	1.27	2.54	27P	33.02	34.29
3P	2.54	3.81	28P	34.29	35.56
4P	3.81	5.08	29P	35.56	36.83
5P	5.08	6.35	30P	36.83	38.10
6P	6.35	7.62	31P	38.10	39.37
7P	7.62	8.89	32P	39.37	40.64
8P	8.89	10.16	33P	40.64	41.91
9P	10.16	11.43	34P	41.91	43.18
10P	11.43	12.70	35P	43.18	44.45
11P	12.70	13.97	36P	44.45	45.72
12P	13.97	15.24	37P	45.72	46.99
13P	15.24	16.51	38P	46.99	48.26
14P	16.51	17.78	39P	48.26	49.53
15P	17.78	19.05	40P	49.53	50.80
16P	19.05	20.32	41P	50.80	52.07
17P	20.32	21.59	42P	52.07	53.34
18P	21.59	22.86	43P	53.34	54.61
19P	22.86	24.13	44P	54.61	55.88
20P	24.13	25.40	45P	55.88	57.15
21P	25.40	26.67	46P	57.15	58.42
22P	26.67	27.94	47P	58.42	59.69
23P	27.94	29.21	48P	59.69	60.96
24P	29.21	30.48	49P	60.96	62.23
25P	30.48	31.75	50P	62.23	63.50
26P	31.75	33.02			

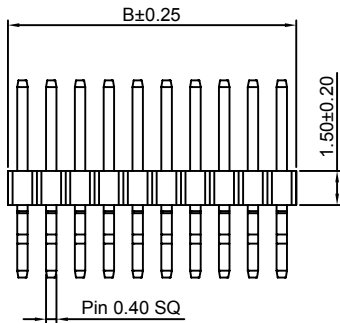
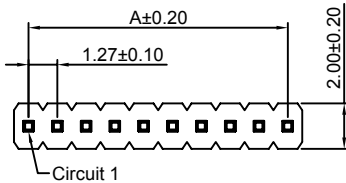
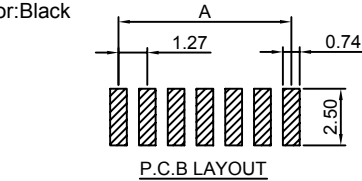
Unit: mm

A1276WR-S-XP

1.27mm Pitch 90° Single Row Pin Header - SMT TYPE

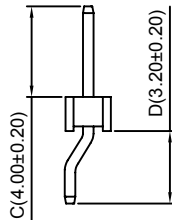
Reference Informations:

- *Material:Pin:Brass/Gold over Nickel
Insulator:Nylon 6T,UL94V-0
- *Mates with CJT A1276 series Single Row Female Header
Optional Gold plating available but MOQ requested
- *Color:Black



Ordering Information:
A1276WR-S-XP - *** - ***
1 2 3

- Part No.
- Material:
(Blank):Nylon 6T,UL94V-0
GWT:Nylon 6T,UL94V-0,GWT 750 °C
- Finish:
(blank):Gold-flash
G15:15µin (0.38µm) MIN.Select Gold(Mating Area)
100µin (2.54µm) MIN.Select Tin
G30:30µin (0.76µm) MIN.Select Gold(Mating Area)
100µin (2.54µm) MIN.Select Tin
T: Tin over Nickel



Ordering Information & Dimensions:

PART NO.	Dimensions		PART NO.	Dimensions	
	A	B		A	B
2P	1.27	2.54	27P	33.02	34.29
3P	2.54	3.81	28P	34.29	35.56
4P	3.81	5.08	29P	35.56	36.83
5P	5.08	6.35	30P	36.83	38.10
6P	6.35	7.62	31P	38.10	39.37
7P	7.62	8.89	32P	39.37	40.64
8P	8.89	10.16	33P	40.64	41.91
9P	10.16	11.43	34P	41.91	43.18
10P	11.43	12.70	35P	43.18	44.45
11P	12.70	13.97	36P	44.45	45.72
12P	13.97	15.24	37P	45.72	46.99
13P	15.24	16.51	38P	46.99	48.26
14P	16.51	17.78	39P	48.26	49.53
15P	17.78	19.05	40P	49.53	50.80
16P	19.05	20.32	41P	50.80	52.07
17P	20.32	21.59	42P	52.07	53.34
18P	21.59	22.86	43P	53.34	54.61
19P	22.86	24.13	44P	54.61	55.88
20P	24.13	25.40	45P	55.88	57.15
21P	25.40	26.67	46P	57.15	58.42
22P	26.67	27.94	47P	58.42	59.69
23P	27.94	29.21	48P	59.69	60.96
24P	29.21	30.48	49P	60.96	62.23
25P	30.48	31.75	50P	62.23	63.50
26P	31.75	33.02			

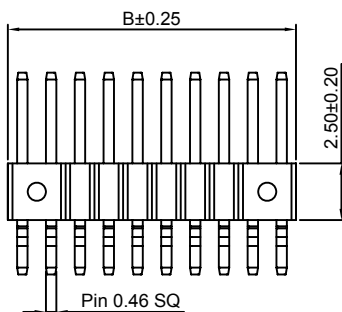
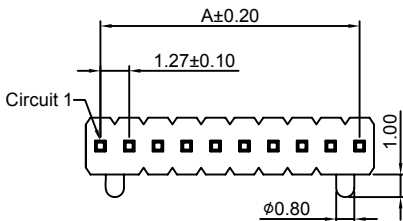
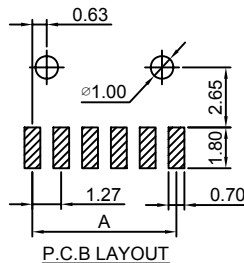
Unit: mm

A1276WR-S-F-XP-H25

1.27mm Pitch 90° Single Row Pin Header - SMT TYPE

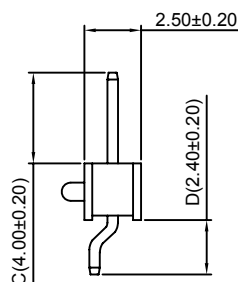
Reference Informations:

- *Material:Pin:Brass/Gold over Nickel
Insulator:Nylon 6T,UL94V-0
- *Mates with CJT A1276 series Single Row Female Header
Optional Gold plating available but MOQ requested
- *Color:Black



Ordering Information:
A1276WR-S-F-XP-H25 - *** - ***
1 2 3

- Part No.
- Material:
(Blank):Nylon 6T,UL94V-0
GWT:Nylon 6T,UL94V-0,GWT 750 °C
- Finish:
(blank):Gold-flash
G15:15µin (0.38µm) MIN.Select Gold(Mating Area)
100µin (2.54µm) MIN.Select Tin
G30:30µin (0.76µm) MIN.Select Gold(Mating Area)
100µin (2.54µm) MIN.Select Tin
T: Tin over Nickel



Ordering Information & Dimensions:

PART NO.	Dimensions		PART NO.	Dimensions	
	A	B		A	B
2P	1.27	2.54	27P	33.02	34.29
3P	2.54	3.81	28P	34.29	35.56
4P	3.81	5.08	29P	35.56	36.83
5P	5.08	6.35	30P	36.83	38.10
6P	6.35	7.62	31P	38.10	39.37
7P	7.62	8.89	32P	39.37	40.64
8P	8.89	10.16	33P	40.64	41.91
9P	10.16	11.43	34P	41.91	43.18
10P	11.43	12.70	35P	43.18	44.45
11P	12.70	13.97	36P	44.45	45.72
12P	13.97	15.24	37P	45.72	46.99
13P	15.24	16.51	38P	46.99	48.26
14P	16.51	17.78	39P	48.26	49.53
15P	17.78	19.05	40P	49.53	50.80
16P	19.05	20.32	41P	50.80	52.07
17P	20.32	21.59	42P	52.07	53.34
18P	21.59	22.86	43P	53.34	54.61
19P	22.86	24.13	44P	54.61	55.88
20P	24.13	25.40	45P	55.88	57.15
21P	25.40	26.67	46P	57.15	58.42
22P	26.67	27.94	47P	58.42	59.69
23P	27.94	29.21	48P	59.69	60.96
24P	29.21	30.48	49P	60.96	62.23
25P	30.48	31.75	50P	62.23	63.50
26P	31.75	33.02			

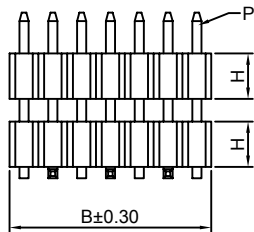
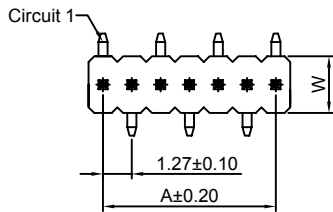
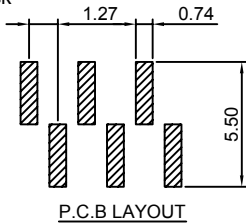
Unit: mm

A1276WVA-S-XP-A

1.27mm Pitch 180° Single Row Pin Header - SMT A TYPE

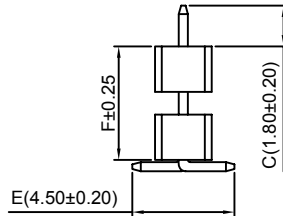
Reference Informations:

- *Material:Pin:Brass/Gold over Nickel
Insulator:Nylon 6T,UL94V-0
- *Mates with CJT A1276 series Single Row Female Header
Optional Gold plating available but MOQ requested
- *Color:Black



Ordering Information:
A1276WVA-S-XP-A - ^{***}/₁ - ^{***}/₂ - ^{***}/₃ - ^{***}/₄

- 1.Part No.
- 2.Size(H):
(Blank):1.00mm(W:2.10mm,P:Pin 0.40 SQ)
H15:1.50mm(W:2.40mm,P:Pin 0.40 SQ)
H17:1.70mm(W:2.50mm,P:Pin 0.46 SQ)
H20:2.00mm(W:2.50mm,P:Pin 0.40 SQ)
H25:2.50mm(W:2.50mm,P:Pin 0.40 SQ)
- 3.Material:
(Blank):Nylon 6T,UL94V-0
GWT:Nylon 6T,UL94V-0,GWT 750 °C
- 4.Finish:
(blank):Gold-flash
G15:15µin (0.38µm) MIN.Select Gold(Mating Area)
100µin (2.54µm) MIN.Select Tin
G30:30µin (0.76µm) MIN.Select Gold(Mating Area)
100µin (2.54µm) MIN.Select Tin
I: Tin over Nickel



Ordering Information & Dimensions:

PART NO.	Dimensions		PART NO.	Dimensions	
	A	B		A	B
2P	1.27	2.54	27P	33.02	34.29
3P	2.54	3.81	28P	34.29	35.56
4P	3.81	5.08	29P	35.56	36.83
5P	5.08	6.35	30P	36.83	38.10
6P	6.35	7.62	31P	38.10	39.37
7P	7.62	8.89	32P	39.37	40.64
8P	8.89	10.16	33P	40.64	41.91
9P	10.16	11.43	34P	41.91	43.18
10P	11.43	12.70	35P	43.18	44.45
11P	12.70	13.97	36P	44.45	45.72
12P	13.97	15.24	37P	45.72	46.99
13P	15.24	16.51	38P	46.99	48.26
14P	16.51	17.78	39P	48.26	49.53
15P	17.78	19.05	40P	49.53	50.80
16P	19.05	20.32	41P	50.80	52.07
17P	20.32	21.59	42P	52.07	53.34
18P	21.59	22.86	43P	53.34	54.61
19P	22.86	24.13	44P	54.61	55.88
20P	24.13	25.40	45P	55.88	57.15
21P	25.40	26.67	46P	57.15	58.42
22P	26.67	27.94	47P	58.42	59.69
23P	27.94	29.21	48P	59.69	60.96
24P	29.21	30.48	49P	60.96	62.23
25P	30.48	31.75	50P	62.23	63.50
26P	31.75	33.02			

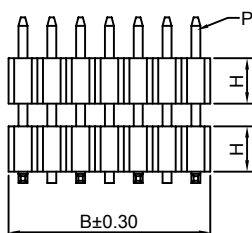
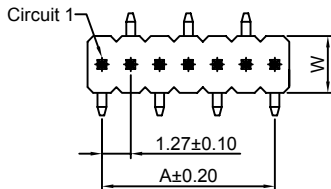
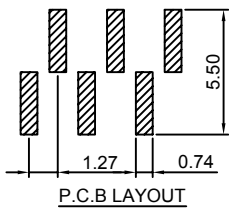
Unit: mm

A1276WVA-S-XP-B

1.27mm Pitch 180° Single Row Pin Header - SMT B TYPE

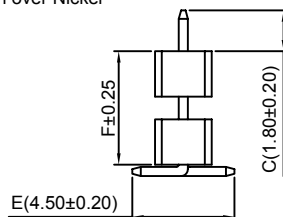
Reference Informations:

- *Material:Pin:Brass/Gold over Nickel
Insulator:Nylon 6T,UL94V-0
- *Mates with CJT A1276 series Single Row Female Header
Optional Gold plating available but MOQ requested
- *Color:Black



Ordering Information:
A1276WVA-S-XP-B - ^{***}/₁ - ^{***}/₂ - ^{***}/₃ - ^{***}/₄

- 1.Part No.
- 2.Size(H):
(Blank):1.00mm(W:2.10mm,P:Pin 0.40 SQ)
H15:1.50mm(W:2.40mm,P:Pin 0.40 SQ)
H17:1.70mm(W:2.50mm,P:Pin 0.46 SQ)
H20:2.00mm(W:2.50mm,P:Pin 0.40 SQ)
H25:2.50mm(W:2.50mm,P:Pin 0.40 SQ)
- 3.Material:
(Blank):Nylon 6T,UL94V-0
GWT:Nylon 6T,UL94V-0,GWT 750 °C
- 4.Finish:
(blank):Gold-flash
G15:15µin (0.38µm) MIN.Select Gold(Mating Area)
100µin (2.54µm) MIN.Select Tin
G30:30µin (0.76µm) MIN.Select Gold(Mating Area)
100µin (2.54µm) MIN.Select Tin
I: Tin over Nickel



Ordering Information & Dimensions:

PART NO.	Dimensions		PART NO.	Dimensions	
	A	B		A	B
2P	1.27	2.54	27P	33.02	34.29
3P	2.54	3.81	28P	34.29	35.56
4P	3.81	5.08	29P	35.56	36.83
5P	5.08	6.35	30P	36.83	38.10
6P	6.35	7.62	31P	38.10	39.37
7P	7.62	8.89	32P	39.37	40.64
8P	8.89	10.16	33P	40.64	41.91
9P	10.16	11.43	34P	41.91	43.18
10P	11.43	12.70	35P	43.18	44.45
11P	12.70	13.97	36P	44.45	45.72
12P	13.97	15.24	37P	45.72	46.99
13P	15.24	16.51	38P	46.99	48.26
14P	16.51	17.78	39P	48.26	49.53
15P	17.78	19.05	40P	49.53	50.80
16P	19.05	20.32	41P	50.80	52.07
17P	20.32	21.59	42P	52.07	53.34
18P	21.59	22.86	43P	53.34	54.61
19P	22.86	24.13	44P	54.61	55.88
20P	24.13	25.40	45P	55.88	57.15
21P	25.40	26.67	46P	57.15	58.42
22P	26.67	27.94	47P	58.42	59.69
23P	27.94	29.21	48P	59.69	60.96
24P	29.21	30.48	49P	60.96	62.23
25P	30.48	31.75	50P	62.23	63.50
26P	31.75	33.02			

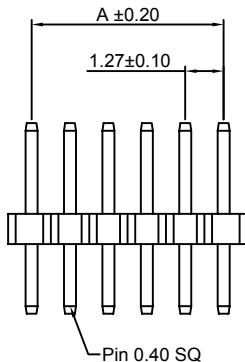
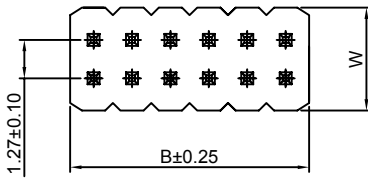
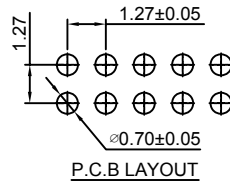
Unit: mm

A1276WV-2xXP

1.27mm Pitch 180° Dual Row Pin Header

Reference Informations:

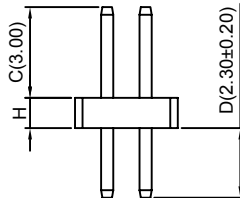
- *Material: Pin: Brass/Gold over Nickel
Insulator: Nylon 6T, UL94V-0
- *Mates with CJT A1276 series Dual Row Female Header
Optional Gold plating available but MOQ requested
- *Color: Black



Ordering Information:

A1276WV-2xXP - *** - *** - ***
1 2 3 4

- Part No.
- Size(H):
(Blank): 1.00mm(W:3.40mm)
H15: 1.50mm(W:3.40mm)
H20: 2.00mm(W:3.00mm)
H25: 2.50mm(W:3.00mm)
- Material:
(Blank): Nylon 6T, UL94V-0
GWT: Nylon 6T, UL94V-0, GWT 750 °C
- Finish:
(blank): Gold-flash
G15: 15µin (0.38µm) MIN. Select Gold (Mating Area)
100µin (2.54µm) MIN. Select Tin
G30: 30µin (0.76µm) MIN. Select Gold (Mating Area)
100µin (2.54µm) MIN. Select Tin
T: Tin over Nickel



Ordering Information & Dimensions:

PART NO.	Dimensions		PART NO.	Dimensions	
	A	B		A	B
2x2P	1.27	2.54	2x27P	33.02	34.29
2x3P	2.54	3.81	2x28P	34.29	35.56
2x4P	3.81	5.08	2x29P	35.56	36.83
2x5P	5.08	6.35	2x30P	36.83	38.10
2x6P	6.35	7.62	2x31P	38.10	39.37
2x7P	7.62	8.89	2x32P	39.37	40.64
2x8P	8.89	10.16	2x33P	40.64	41.91
2x9P	10.16	11.43	2x34P	41.91	43.18
2x10P	11.43	12.70	2x35P	43.18	44.45
2x11P	12.70	13.97	2x36P	44.45	45.72
2x12P	13.97	15.24	2x37P	45.72	46.99
2x13P	15.24	16.51	2x38P	46.99	48.26
2x14P	16.51	17.78	2x39P	48.26	49.53
2x15P	17.78	19.05	2x40P	49.53	50.80
2x16P	19.05	20.32	2x41P	50.80	52.07
2x17P	20.32	21.59	2x42P	52.07	53.34
2x18P	21.59	22.86	2x43P	53.34	54.61
2x19P	22.86	24.13	2x44P	54.61	55.88
2x20P	24.13	25.40	2x45P	55.88	57.15
2x21P	25.40	26.67	2x46P	57.15	58.42
2x22P	26.67	27.94	2x47P	58.42	59.69
2x23P	27.94	29.21	2x48P	59.69	60.96
2x24P	29.21	30.48	2x49P	60.96	62.23
2x25P	30.48	31.75	2x50P	62.23	63.50
2x26P	31.75	33.02			

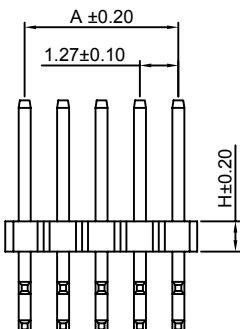
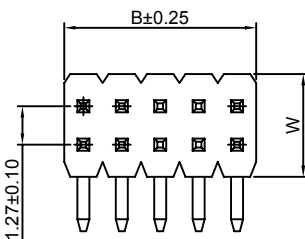
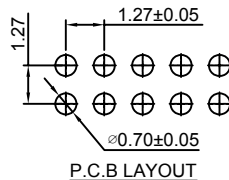
Unit: mm

A1276WR-2xXP

1.27mm Pitch 90° Dual Row Pin Header

Reference Informations:

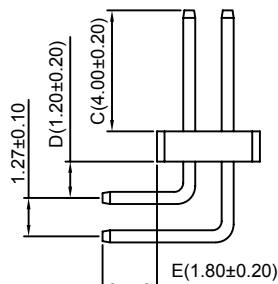
- *Material: Pin: Brass/Gold over Nickel
Insulator: Nylon 6T, UL94V-0
- *Mates with CJT A1276 series Dual Row Female Header
Optional Gold plating available but MOQ requested
- *Color: Black



Ordering Information:

A1276WR-2xXP - *** - *** - ***
1 2 3 4

- Part No.
- Size(H):
(Blank): 1.00mm(W:3.40mm)
H15: 1.50mm(W:3.40mm)
H20: 2.00mm(W:3.00mm)
H25: 2.50mm(W:3.00mm)
- Material:
(Blank): Nylon 6T, UL94V-0
GWT: Nylon 6T, UL94V-0, GWT 750 °C
- Finish:
(blank): Gold-flash
G15: 15µin (0.38µm) MIN. Select Gold (Mating Area)
100µin (2.54µm) MIN. Select Tin
G30: 30µin (0.76µm) MIN. Select Gold (Mating Area)
100µin (2.54µm) MIN. Select Tin
T: Tin over Nickel



Ordering Information & Dimensions:

PART NO.	Dimensions		PART NO.	Dimensions	
	A	B		A	B
2x2P	1.27	2.54	2x27P	33.02	34.29
2x3P	2.54	3.81	2x28P	34.29	35.56
2x4P	3.81	5.08	2x29P	35.56	36.83
2x5P	5.08	6.35	2x30P	36.83	38.10
2x6P	6.35	7.62	2x31P	38.10	39.37
2x7P	7.62	8.89	2x32P	39.37	40.64
2x8P	8.89	10.16	2x33P	40.64	41.91
2x9P	10.16	11.43	2x34P	41.91	43.18
2x10P	11.43	12.70	2x35P	43.18	44.45
2x11P	12.70	13.97	2x36P	44.45	45.72
2x12P	13.97	15.24	2x37P	45.72	46.99
2x13P	15.24	16.51	2x38P	46.99	48.26
2x14P	16.51	17.78	2x39P	48.26	49.53
2x15P	17.78	19.05	2x40P	49.53	50.80
2x16P	19.05	20.32	2x41P	50.80	52.07
2x17P	20.32	21.59	2x42P	52.07	53.34
2x18P	21.59	22.86	2x43P	53.34	54.61
2x19P	22.86	24.13	2x44P	54.61	55.88
2x20P	24.13	25.40	2x45P	55.88	57.15
2x21P	25.40	26.67	2x46P	57.15	58.42
2x22P	26.67	27.94	2x47P	58.42	59.69
2x23P	27.94	29.21	2x48P	59.69	60.96
2x24P	29.21	30.48	2x49P	60.96	62.23
2x25P	30.48	31.75	2x50P	62.23	63.50
2x26P	31.75	33.02			

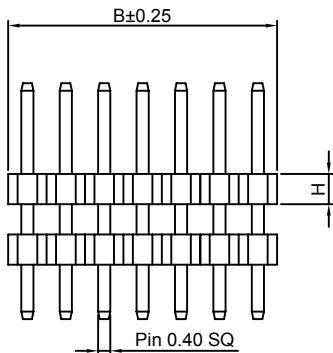
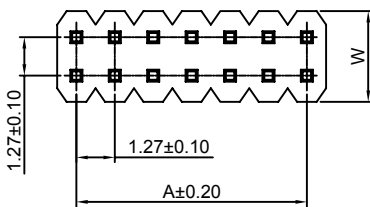
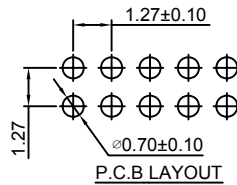
Unit: mm

A1276WVA-2xXP

1.27mm Pitch 180° Dual Row Pin Header

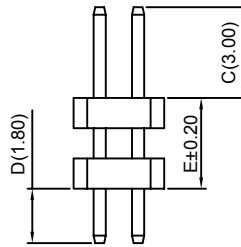
Reference Informations:

- *Material: Pin: Brass/Gold over Nickel
Insulator: Nylon 6T, UL94V-0
- *Mates with CJT A1276 series Dual Row Female Header
Optional Gold plating available but MOQ requested
- *Color: Black



Ordering Information:
A1276WVA-2xXP - *** - *** - ***

- Part No.
- Size(H):
(Blank): 1.00mm(W:3.40mm)
H15: 1.50mm(W:3.40mm)
H20: 2.00mm(W:3.00mm)
H25: 2.50mm(W:3.00mm)
- Material:
(Blank): Nylon 6T, UL94V-0
GWT: Nylon 6T, UL94V-0, GWT 750 °C
- Finish:
(blank): Gold-flash
G15: 15µm (0.38µm) MIN. Select Gold (Mating Area)
100µm (2.54µm) MIN. Select Tin
G30: 30µm (0.76µm) MIN. Select Gold (Mating Area)
100µm (2.54µm) MIN. Select Tin
T: Tin over Nickel



Ordering Information & Dimensions:

PART NO.	Dimensions		PART NO.	Dimensions	
	A	B		A	B
2x2P	1.27	2.54	2x27P	33.02	34.29
2x3P	2.54	3.81	2x28P	34.29	35.56
2x4P	3.81	5.08	2x29P	35.56	36.83
2x5P	5.08	6.35	2x30P	36.83	38.10
2x6P	6.35	7.62	2x31P	38.10	39.37
2x7P	7.62	8.89	2x32P	39.37	40.64
2x8P	8.89	10.16	2x33P	40.64	41.91
2x9P	10.16	11.43	2x34P	41.91	43.18
2x10P	11.43	12.70	2x35P	43.18	44.45
2x11P	12.70	13.97	2x36P	44.45	45.72
2x12P	13.97	15.24	2x37P	45.72	46.99
2x13P	15.24	16.51	2x38P	46.99	48.26
2x14P	16.51	17.78	2x39P	48.26	49.53
2x15P	17.78	19.05	2x40P	49.53	50.80
2x16P	19.05	20.32	2x41P	50.80	52.07
2x17P	20.32	21.59	2x42P	52.07	53.34
2x18P	21.59	22.86	2x43P	53.34	54.61
2x19P	22.86	24.13	2x44P	54.61	55.88
2x20P	24.13	25.40	2x45P	55.88	57.15
2x21P	25.40	26.67	2x46P	57.15	58.42
2x22P	26.67	27.94	2x47P	58.42	59.69
2x23P	27.94	29.21	2x48P	59.69	60.96
2x24P	29.21	30.48	2x49P	60.96	62.23
2x25P	30.48	31.75	2x50P	62.23	63.50
2x26P	31.75	33.02			

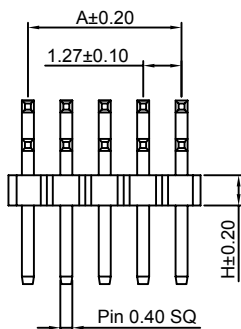
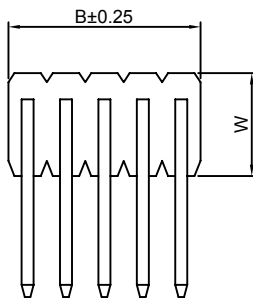
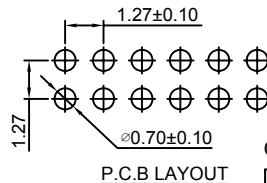
Unit: mm

A1276WRA-2xXP

1.27mm Pitch 90° Dual Row Pin Header

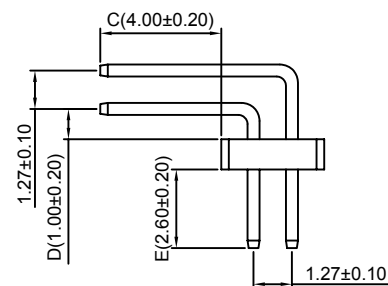
Reference Informations:

- *Material: Pin: Brass/Gold over Nickel
Insulator: Nylon 6T, UL94V-0
- *Mates with CJT A1276 series Dual Row Female Header
Optional Gold plating available but MOQ requested
- *Color: Black



Ordering Information:
A1276WRA-2xXP - *** - *** - ***

- Part No.
- Size(H):
(Blank): 1.00mm(W:3.40mm)
H15: 1.50mm(W:3.40mm)
H20: 2.00mm(W:3.00mm)
H25: 2.50mm(W:3.00mm)
- Material:
(Blank): Nylon 6T, UL94V-0
GWT: Nylon 6T, UL94V-0, GWT 750 °C
- Finish:
(blank): Gold-flash
G15: 15µm (0.38µm) MIN. Select Gold (Mating Area)
100µm (2.54µm) MIN. Select Tin
G30: 30µm (0.76µm) MIN. Select Gold (Mating Area)
100µm (2.54µm) MIN. Select Tin
T: Tin over Nickel



Ordering Information & Dimensions:

PART NO.	Dimensions		PART NO.	Dimensions	
	A	B		A	B
2x2P	1.27	2.54	2x27P	33.02	34.29
2x3P	2.54	3.81	2x28P	34.29	35.56
2x4P	3.81	5.08	2x29P	35.56	36.83
2x5P	5.08	6.35	2x30P	36.83	38.10
2x6P	6.35	7.62	2x31P	38.10	39.37
2x7P	7.62	8.89	2x32P	39.37	40.64
2x8P	8.89	10.16	2x33P	40.64	41.91
2x9P	10.16	11.43	2x34P	41.91	43.18
2x10P	11.43	12.70	2x35P	43.18	44.45
2x11P	12.70	13.97	2x36P	44.45	45.72
2x12P	13.97	15.24	2x37P	45.72	46.99
2x13P	15.24	16.51	2x38P	46.99	48.26
2x14P	16.51	17.78	2x39P	48.26	49.53
2x15P	17.78	19.05	2x40P	49.53	50.80
2x16P	19.05	20.32	2x41P	50.80	52.07
2x17P	20.32	21.59	2x42P	52.07	53.34
2x18P	21.59	22.86	2x43P	53.34	54.61
2x19P	22.86	24.13	2x44P	54.61	55.88
2x20P	24.13	25.40	2x45P	55.88	57.15
2x21P	25.40	26.67	2x46P	57.15	58.42
2x22P	26.67	27.94	2x47P	58.42	59.69
2x23P	27.94	29.21	2x48P	59.69	60.96
2x24P	29.21	30.48	2x49P	60.96	62.23
2x25P	30.48	31.75	2x50P	62.23	63.50
2x26P	31.75	33.02			

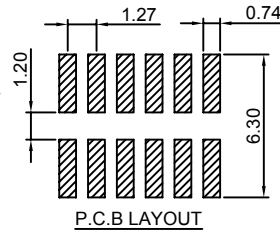
Unit: mm

A1276WV-S-2xXP

1.27mm Pitch 180° Dual Row Pin Header - SMT TYPE

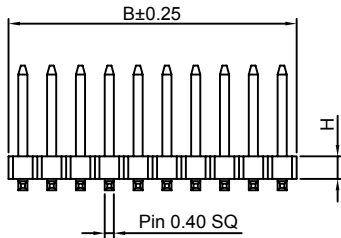
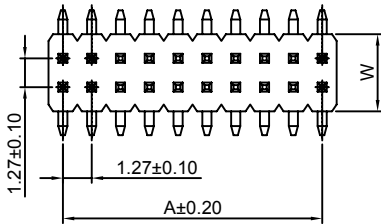
Reference Informations:

- *Material: Pin: Brass/Gold over Nickel
Insulator: Nylon 6T, UL94V-0
- *Mates with CJT A1276 series Dual Row Female Header
Optional Gold plating available but MOQ requested
- *Color: Black



Ordering Information:
A1276WV-S-2xXP - *** - *** - ***
1 2 3 4

1. Part No.
2. Size(H):
(Blank): 1.00mm (W: 3.40mm)
H15: 1.50mm (W: 3.40mm)
H20: 2.00mm (W: 3.00mm)
H25: 2.50mm (W: 3.00mm)
3. Material:
(Blank): Nylon 6T, UL94V-0
GWT: Nylon 6T, UL94V-0, GWT 750 °C
4. Finish:
(blank): Gold-flash
G15: 15µin (0.38µm) MIN. Select Gold (Mating Area)
100µin (2.54µm) MIN. Select Tin
G30: 30µin (0.76µm) MIN. Select Gold (Mating Area)
100µin (2.54µm) MIN. Select Tin
T: Tin over Nickel



Ordering Information & Dimensions:

PART NO.	Dimensions		PART NO.	Dimensions	
	A	B		A	B
2x2P	1.27	2.54	2x27P	33.02	34.29
2x3P	2.54	3.81	2x28P	34.29	35.56
2x4P	3.81	5.08	2x29P	35.56	36.83
2x5P	5.08	6.35	2x30P	36.83	38.10
2x6P	6.35	7.62	2x31P	38.10	39.37
2x7P	7.62	8.89	2x32P	39.37	40.64
2x8P	8.89	10.16	2x33P	40.64	41.91
2x9P	10.16	11.43	2x34P	41.91	43.18
2x10P	11.43	12.70	2x35P	43.18	44.45
2x11P	12.70	13.97	2x36P	44.45	45.72
2x12P	13.97	15.24	2x37P	45.72	46.99
2x13P	15.24	16.51	2x38P	46.99	48.26
2x14P	16.51	17.78	2x39P	48.26	49.53
2x15P	17.78	19.05	2x40P	49.53	50.80
2x16P	19.05	20.32	2x41P	50.80	52.07
2x17P	20.32	21.59	2x42P	52.07	53.34
2x18P	21.59	22.86	2x43P	53.34	54.61
2x19P	22.86	24.13	2x44P	54.61	55.88
2x20P	24.13	25.40	2x45P	55.88	57.15
2x21P	25.40	26.67	2x46P	57.15	58.42
2x22P	26.67	27.94	2x47P	58.42	59.69
2x23P	27.94	29.21	2x48P	59.69	60.96
2x24P	29.21	30.48	2x49P	60.96	62.23
2x25P	30.48	31.75	2x50P	62.23	63.50
2x26P	31.75	33.02			

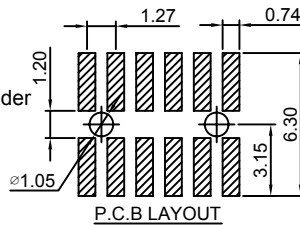
Unit: mm

A1276WV-S-F-2xXP

1.27mm Pitch 180° Dual Row Pin Header - SMT TYPE

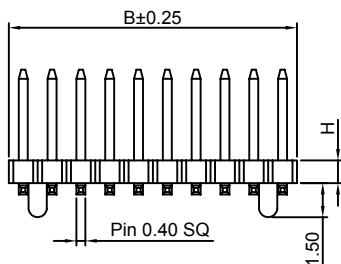
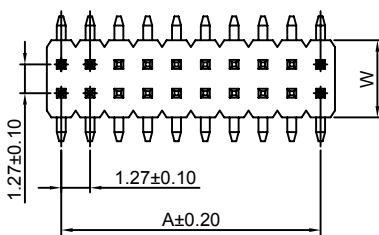
Reference Informations:

- *Material: Pin: Brass/Gold over Nickel
Insulator: Nylon 6T, UL94V-0
- *Mates with CJT A1276 series Dual Row Female Header
Optional Gold plating available but MOQ requested
- *Color: Black



Ordering Information:
A1276WV-S-F-2xXP - *** - *** - ***
1 2 3 4

1. Part No.
2. Size(H):
(Blank): 1.00mm (W: 3.40mm)
H15: 1.50mm (W: 3.40mm)
H20: 2.00mm (W: 3.00mm)
H25: 2.50mm (W: 3.00mm)
3. Material:
(Blank): Nylon 6T, UL94V-0
GWT: Nylon 6T, UL94V-0, GWT 750 °C
4. Finish:
(blank): Gold-flash
G15: 15µin (0.38µm) MIN. Select Gold (Mating Area)
100µin (2.54µm) MIN. Select Tin
G30: 30µin (0.76µm) MIN. Select Gold (Mating Area)
100µin (2.54µm) MIN. Select Tin
T: Tin over Nickel



Ordering Information & Dimensions:

PART NO.	Dimensions		PART NO.	Dimensions	
	A	B		A	B
2x2P	1.27	2.54	2x27P	33.02	34.29
2x3P	2.54	3.81	2x28P	34.29	35.56
2x4P	3.81	5.08	2x29P	35.56	36.83
2x5P	5.08	6.35	2x30P	36.83	38.10
2x6P	6.35	7.62	2x31P	38.10	39.37
2x7P	7.62	8.89	2x32P	39.37	40.64
2x8P	8.89	10.16	2x33P	40.64	41.91
2x9P	10.16	11.43	2x34P	41.91	43.18
2x10P	11.43	12.70	2x35P	43.18	44.45
2x11P	12.70	13.97	2x36P	44.45	45.72
2x12P	13.97	15.24	2x37P	45.72	46.99
2x13P	15.24	16.51	2x38P	46.99	48.26
2x14P	16.51	17.78	2x39P	48.26	49.53
2x15P	17.78	19.05	2x40P	49.53	50.80
2x16P	19.05	20.32	2x41P	50.80	52.07
2x17P	20.32	21.59	2x42P	52.07	53.34
2x18P	21.59	22.86	2x43P	53.34	54.61
2x19P	22.86	24.13	2x44P	54.61	55.88
2x20P	24.13	25.40	2x45P	55.88	57.15
2x21P	25.40	26.67	2x46P	57.15	58.42
2x22P	26.67	27.94	2x47P	58.42	59.69
2x23P	27.94	29.21	2x48P	59.69	60.96
2x24P	29.21	30.48	2x49P	60.96	62.23
2x25P	30.48	31.75	2x50P	62.23	63.50
2x26P	31.75	33.02			

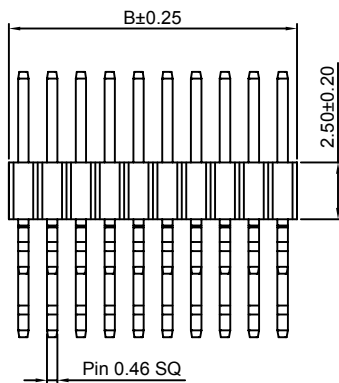
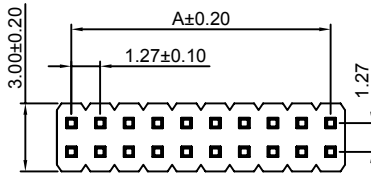
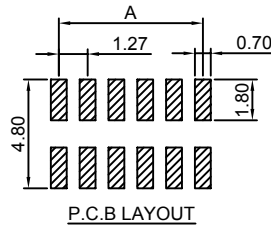
Unit: mm

A1276WR-S-2xXP-H25

1.27mm Pitch 90° Dual Row Pin Header - SMT TYPE

Reference Informations:

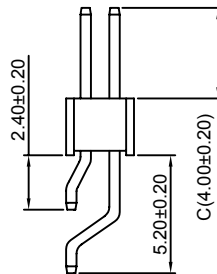
- *Material: Pin: Brass/Gold over Nickel
Insulator: Nylon 6T, UL94V-0
- *Mates with CJT A1276 series Dual Row Female Header
Optional Gold plating available but MOQ requested
- *Color: Black



Ordering Information:

A1276WR-S-2xXP-H25 - *** - ***
1 2 3

1. Part No.
2. Material:
(Blank): Nylon 6T, UL94V-0
GWT: Nylon 6T, UL94V-0, GWT 750 °C
3. Finish:
(blank): Gold-flash
G15: 15µin (0.38µm) MIN. Select Gold (Mating Area)
100µin (2.54µm) MIN. Select Tin
G30: 30µin (0.76µm) MIN. Select Gold (Mating Area)
100µin (2.54µm) MIN. Select Tin
I: Tin over Nickel



Ordering Information & Dimensions:

PART NO.	Dimensions		PART NO.	Dimensions	
	A	B		A	B
2x2P	1.27	2.54	2x27P	33.02	34.29
2x3P	2.54	3.81	2x28P	34.29	35.56
2x4P	3.81	5.08	2x29P	35.56	36.83
2x5P	5.08	6.35	2x30P	36.83	38.10
2x6P	6.35	7.62	2x31P	38.10	39.37
2x7P	7.62	8.89	2x32P	39.37	40.64
2x8P	8.89	10.16	2x33P	40.64	41.91
2x9P	10.16	11.43	2x34P	41.91	43.18
2x10P	11.43	12.70	2x35P	43.18	44.45
2x11P	12.70	13.97	2x36P	44.45	45.72
2x12P	13.97	15.24	2x37P	45.72	46.99
2x13P	15.24	16.51	2x38P	46.99	48.26
2x14P	16.51	17.78	2x39P	48.26	49.53
2x15P	17.78	19.05	2x40P	49.53	50.80
2x16P	19.05	20.32	2x41P	50.80	52.07
2x17P	20.32	21.59	2x42P	52.07	53.34
2x18P	21.59	22.86	2x43P	53.34	54.61
2x19P	22.86	24.13	2x44P	54.61	55.88
2x20P	24.13	25.40	2x45P	55.88	57.15
2x21P	25.40	26.67	2x46P	57.15	58.42
2x22P	26.67	27.94	2x47P	58.42	59.69
2x23P	27.94	29.21	2x48P	59.69	60.96
2x24P	29.21	30.48	2x49P	60.96	62.23
2x25P	30.48	31.75	2x50P	62.23	63.50
2x26P	31.75	33.02			

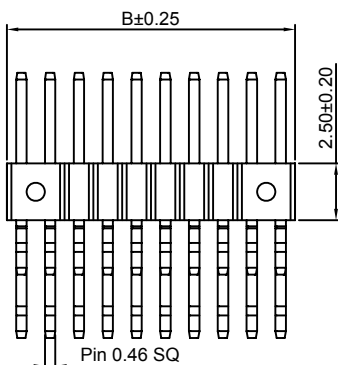
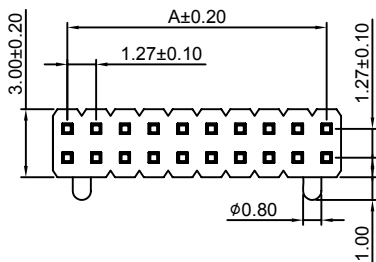
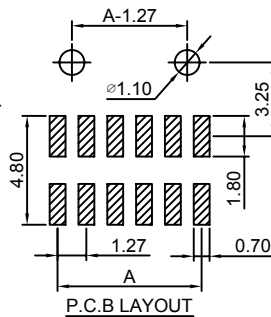
Unit: mm

A1276WR-S-F-2xXP-H25

1.27mm Pitch 90° Dual Row Pin Header - SMT TYPE

Reference Informations:

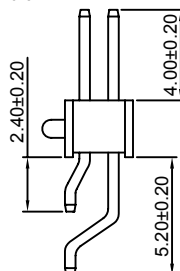
- *Material: Pin: Brass/Gold over Nickel
Insulator: Nylon 6T, UL94V-0
- *Mates with CJT A1276 series Dual Row Female Header
Optional Gold plating available but MOQ requested
- *Color: Black



Ordering Information:

A1276WR-S-F-2xXP-H25 - *** - ***
1 2 3

1. Part No.
2. Material:
(Blank): Nylon 6T, UL94V-0
GWT: Nylon 6T, UL94V-0, GWT 750 °C
3. Finish:
(blank): Gold-flash
G15: 15µin (0.38µm) MIN. Select Gold (Mating Area)
100µin (2.54µm) MIN. Select Tin
G30: 30µin (0.76µm) MIN. Select Gold (Mating Area)
100µin (2.54µm) MIN. Select Tin
I: Tin over Nickel



Ordering Information & Dimensions:

PART NO.	Dimensions		PART NO.	Dimensions	
	A	B		A	B
2x2P	1.27	2.54	2x27P	33.02	34.29
2x3P	2.54	3.81	2x28P	34.29	35.56
2x4P	3.81	5.08	2x29P	35.56	36.83
2x5P	5.08	6.35	2x30P	36.83	38.10
2x6P	6.35	7.62	2x31P	38.10	39.37
2x7P	7.62	8.89	2x32P	39.37	40.64
2x8P	8.89	10.16	2x33P	40.64	41.91
2x9P	10.16	11.43	2x34P	41.91	43.18
2x10P	11.43	12.70	2x35P	43.18	44.45
2x11P	12.70	13.97	2x36P	44.45	45.72
2x12P	13.97	15.24	2x37P	45.72	46.99
2x13P	15.24	16.51	2x38P	46.99	48.26
2x14P	16.51	17.78	2x39P	48.26	49.53
2x15P	17.78	19.05	2x40P	49.53	50.80
2x16P	19.05	20.32	2x41P	50.80	52.07
2x17P	20.32	21.59	2x42P	52.07	53.34
2x18P	21.59	22.86	2x43P	53.34	54.61
2x19P	22.86	24.13	2x44P	54.61	55.88
2x20P	24.13	25.40	2x45P	55.88	57.15
2x21P	25.40	26.67	2x46P	57.15	58.42
2x22P	26.67	27.94	2x47P	58.42	59.69
2x23P	27.94	29.21	2x48P	59.69	60.96
2x24P	29.21	30.48	2x49P	60.96	62.23
2x25P	30.48	31.75	2x50P	62.23	63.50
2x26P	31.75	33.02			

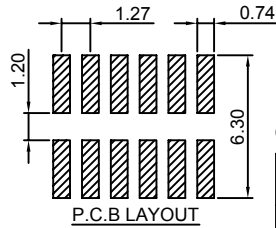
Unit: mm

A1276WVA-S-2xXP

1.27mm Pitch 180° Dual Row Pin Header - SMT TYPE

Reference Informations:

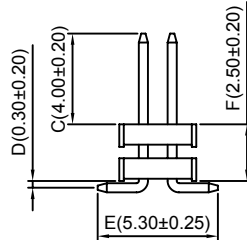
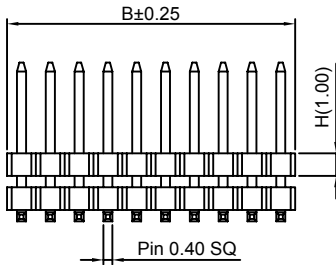
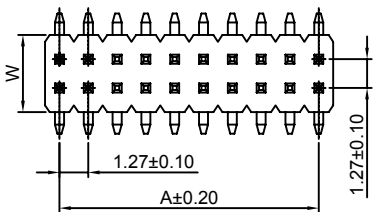
- *Material: Pin: Brass/Gold over Nickel
Insulator: Nylon 6T, UL94V-0
- *Mates with CJT A1276 series Dual Row Female Header
Optional Gold plating available but MOQ requested
- *Color: Black



Ordering Information:

A1276WVA-S-2xXP - *** - *** - ***
1 2 3 4

- Part No.
- Size(H):
(Blank): 1.00mm(W:3.40mm)
H15: 1.50mm(W:3.40mm)
H20: 2.00mm(W:3.00mm)
H25: 2.50mm(W:3.00mm)
- Material:
(Blank): Nylon 6T, UL94V-0
GWT: Nylon 6T, UL94V-0, GWT 750 °C
- Finish:
(blank): Gold-flash
G15: 15µin (0.38µm) MIN. Select Gold (Mating Area)
100µin (2.54µm) MIN. Select Tin
G30: 30µin (0.76µm) MIN. Select Gold (Mating Area)
100µin (2.54µm) MIN. Select Tin
I: Tin over Nickel



Ordering Information & Dimensions:

PART NO.	Dimensions		PART NO.	Dimensions	
	A	B		A	B
2x2P	1.27	2.54	2x27P	33.02	34.29
2x3P	2.54	3.81	2x28P	34.29	35.56
2x4P	3.81	5.08	2x29P	35.56	36.83
2x5P	5.08	6.35	2x30P	36.83	38.10
2x6P	6.35	7.62	2x31P	38.10	39.37
2x7P	7.62	8.89	2x32P	39.37	40.64
2x8P	8.89	10.16	2x33P	40.64	41.91
2x9P	10.16	11.43	2x34P	41.91	43.18
2x10P	11.43	12.70	2x35P	43.18	44.45
2x11P	12.70	13.97	2x36P	44.45	45.72
2x12P	13.97	15.24	2x37P	45.72	46.99
2x13P	15.24	16.51	2x38P	46.99	48.26
2x14P	16.51	17.78	2x39P	48.26	49.53
2x15P	17.78	19.05	2x40P	49.53	50.80
2x16P	19.05	20.32	2x41P	50.80	52.07
2x17P	20.32	21.59	2x42P	52.07	53.34
2x18P	21.59	22.86	2x43P	53.34	54.61
2x19P	22.86	24.13	2x44P	54.61	55.88
2x20P	24.13	25.40	2x45P	55.88	57.15
2x21P	25.40	26.67	2x46P	57.15	58.42
2x22P	26.67	27.94	2x47P	58.42	59.69
2x23P	27.94	29.21	2x48P	59.69	60.96
2x24P	29.21	30.48	2x49P	60.96	62.23
2x25P	30.48	31.75	2x50P	62.23	63.50
2x26P	31.75	33.02			

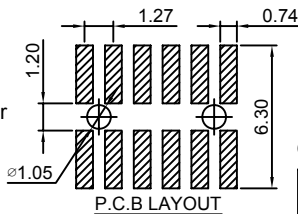
Unit: mm

A1276WVA-S-F-2xXP

1.27mm Pitch 180° Dual Row Pin Header - SMT TYPE

Reference Informations:

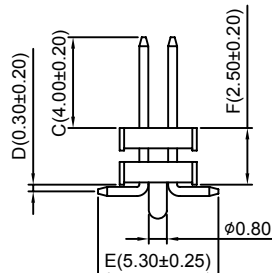
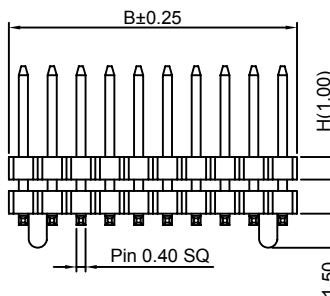
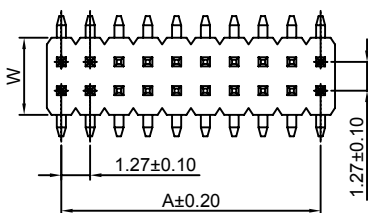
- *Material: Pin: Brass/Gold over Nickel
Insulator: Nylon 6T, UL94V-0
- *Mates with CJT A1276 series Dual Row Female Header
Optional Gold plating available but MOQ requested
- *Color: Black



Ordering Information:

A1276WVA-S-F-2xXP - *** - *** - ***
1 2 3 4

- Part No.
- Size(H):
(Blank): 1.00mm(W:3.40mm)
H15: 1.50mm(W:3.40mm)
H20: 2.00mm(W:3.00mm)
H25: 2.50mm(W:3.00mm)
- Material:
(Blank): Nylon 6T, UL94V-0
GWT: Nylon 6T, UL94V-0, GWT 750 °C
- Finish:
(blank): Gold-flash
G15: 15µin (0.38µm) MIN. Select Gold (Mating Area)
100µin (2.54µm) MIN. Select Tin
G30: 30µin (0.76µm) MIN. Select Gold (Mating Area)
100µin (2.54µm) MIN. Select Tin
I: Tin over Nickel



Ordering Information & Dimensions:

PART NO.	Dimensions		PART NO.	Dimensions	
	A	B		A	B
2x2P	1.27	2.54	2x27P	33.02	34.29
2x3P	2.54	3.81	2x28P	34.29	35.56
2x4P	3.81	5.08	2x29P	35.56	36.83
2x5P	5.08	6.35	2x30P	36.83	38.10
2x6P	6.35	7.62	2x31P	38.10	39.37
2x7P	7.62	8.89	2x32P	39.37	40.64
2x8P	8.89	10.16	2x33P	40.64	41.91
2x9P	10.16	11.43	2x34P	41.91	43.18
2x10P	11.43	12.70	2x35P	43.18	44.45
2x11P	12.70	13.97	2x36P	44.45	45.72
2x12P	13.97	15.24	2x37P	45.72	46.99
2x13P	15.24	16.51	2x38P	46.99	48.26
2x14P	16.51	17.78	2x39P	48.26	49.53
2x15P	17.78	19.05	2x40P	49.53	50.80
2x16P	19.05	20.32	2x41P	50.80	52.07
2x17P	20.32	21.59	2x42P	52.07	53.34
2x18P	21.59	22.86	2x43P	53.34	54.61
2x19P	22.86	24.13	2x44P	54.61	55.88
2x20P	24.13	25.40	2x45P	55.88	57.15
2x21P	25.40	26.67	2x46P	57.15	58.42
2x22P	26.67	27.94	2x47P	58.42	59.69
2x23P	27.94	29.21	2x48P	59.69	60.96
2x24P	29.21	30.48	2x49P	60.96	62.23
2x25P	30.48	31.75	2x50P	62.23	63.50
2x26P	31.75	33.02			

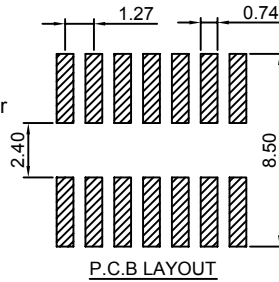
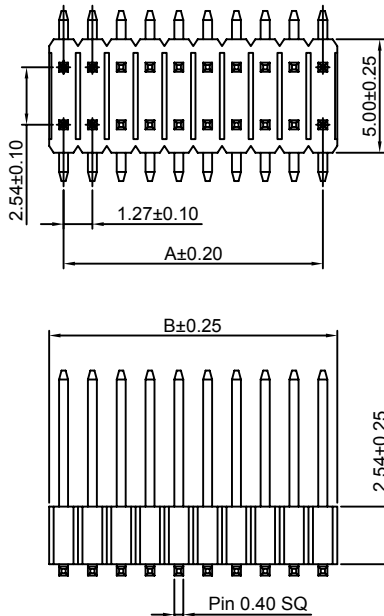
Unit: mm

A1276WVB-S-2xXP-H25

1.27mm Pitch 180° Dual Row Pin Header - SMT TYPE

Reference Informations:

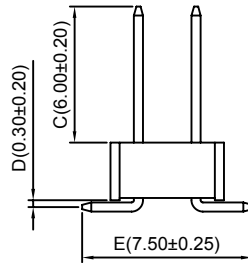
- *Material: Pin: Brass/Gold over Nickel
Insulator: Nylon 9T, UL94V-0
- *Mates with CJT A1276 series Dual Row Female Header
Optional Gold plating available but MOQ requested
- *Color: Black



Ordering Information:

A1276WVB-S-2xXP-H25 - *** - ***
1 2 3

1. Part No.
2. Material:
(Blank): Nylon 9T, UL94V-0
GWT: Nylon 9T, UL94V-0, GWT 750 °C
3. Finish:
(blank): Gold-flash
G15: 15µin (0.38µm) MIN. Select Gold (Mating Area)
100µin (2.54µm) MIN. Select Tin
G30: 30µin (0.76µm) MIN. Select Gold (Mating Area)
100µin (2.54µm) MIN. Select Tin
I: Tin over Nickel



Ordering Information & Dimensions:

PART NO.	Dimensions		PART NO.	Dimensions	
	A	B		A	B
2x2P	1.27	2.54	2x27P	33.02	34.29
2x3P	2.54	3.81	2x28P	34.29	35.56
2x4P	3.81	5.08	2x29P	35.56	36.83
2x5P	5.08	6.35	2x30P	36.83	38.10
2x6P	6.35	7.62	2x31P	38.10	39.37
2x7P	7.62	8.89	2x32P	39.37	40.64
2x8P	8.89	10.16	2x33P	40.64	41.91
2x9P	10.16	11.43	2x34P	41.91	43.18
2x10P	11.43	12.70	2x35P	43.18	44.45
2x11P	12.70	13.97	2x36P	44.45	45.72
2x12P	13.97	15.24	2x37P	45.72	46.99
2x13P	15.24	16.51	2x38P	46.99	48.26
2x14P	16.51	17.78	2x39P	48.26	49.53
2x15P	17.78	19.05	2x40P	49.53	50.80
2x16P	19.05	20.32	2x41P	50.80	52.07
2x17P	20.32	21.59	2x42P	52.07	53.34
2x18P	21.59	22.86	2x43P	53.34	54.61
2x19P	22.86	24.13	2x44P	54.61	55.88
2x20P	24.13	25.40	2x45P	55.88	57.15
2x21P	25.40	26.67	2x46P	57.15	58.42
2x22P	26.67	27.94	2x47P	58.42	59.69
2x23P	27.94	29.21	2x48P	59.69	60.96
2x24P	29.21	30.48	2x49P	60.96	62.23
2x25P	30.48	31.75	2x50P	62.23	63.50
2x26P	31.75	33.02			

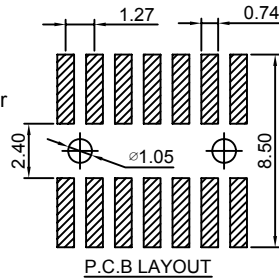
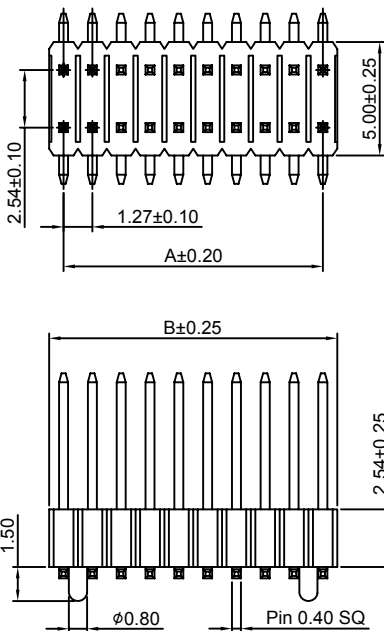
Unit: mm

A1276WVB-S-F-2xXP-H25

1.27mm Pitch 90° Dual Row Pin Header - SMT TYPE

Reference Informations:

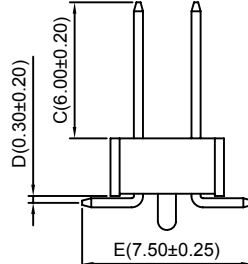
- *Material: Pin: Brass/Gold over Nickel
Insulator: Nylon 9T, UL94V-0
- *Mates with CJT A1276 series Dual Row Female Header
Optional Gold plating available but MOQ requested
- *Color: Black



Ordering Information:

A1276WVB-S-F-2xXP-H25 - *** - ***
1 2 3

1. Part No.
2. Material:
(Blank): Nylon 9T, UL94V-0
GWT: Nylon 9T, UL94V-0, GWT 750 °C
3. Finish:
(blank): Gold-flash
G15: 15µin (0.38µm) MIN. Select Gold (Mating Area)
100µin (2.54µm) MIN. Select Tin
G30: 30µin (0.76µm) MIN. Select Gold (Mating Area)
100µin (2.54µm) MIN. Select Tin
I: Tin over Nickel



Ordering Information & Dimensions:

PART NO.	Dimensions		PART NO.	Dimensions	
	A	B		A	B
2x2P	1.27	2.54	2x27P	33.02	34.29
2x3P	2.54	3.81	2x28P	34.29	35.56
2x4P	3.81	5.08	2x29P	35.56	36.83
2x5P	5.08	6.35	2x30P	36.83	38.10
2x6P	6.35	7.62	2x31P	38.10	39.37
2x7P	7.62	8.89	2x32P	39.37	40.64
2x8P	8.89	10.16	2x33P	40.64	41.91
2x9P	10.16	11.43	2x34P	41.91	43.18
2x10P	11.43	12.70	2x35P	43.18	44.45
2x11P	12.70	13.97	2x36P	44.45	45.72
2x12P	13.97	15.24	2x37P	45.72	46.99
2x13P	15.24	16.51	2x38P	46.99	48.26
2x14P	16.51	17.78	2x39P	48.26	49.53
2x15P	17.78	19.05	2x40P	49.53	50.80
2x16P	19.05	20.32	2x41P	50.80	52.07
2x17P	20.32	21.59	2x42P	52.07	53.34
2x18P	21.59	22.86	2x43P	53.34	54.61
2x19P	22.86	24.13	2x44P	54.61	55.88
2x20P	24.13	25.40	2x45P	55.88	57.15
2x21P	25.40	26.67	2x46P	57.15	58.42
2x22P	26.67	27.94	2x47P	58.42	59.69
2x23P	27.94	29.21	2x48P	59.69	60.96
2x24P	29.21	30.48	2x49P	60.96	62.23
2x25P	30.48	31.75	2x50P	62.23	63.50
2x26P	31.75	33.02			

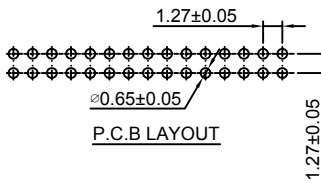
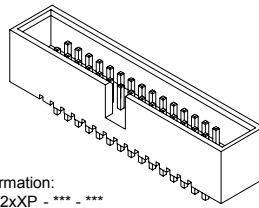
Unit: mm

A1276WV-N-2xXP

1.27mm Pitch 180° Dual Row Box Header

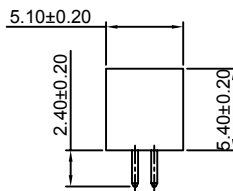
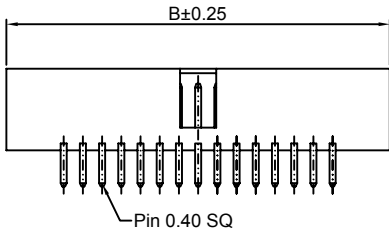
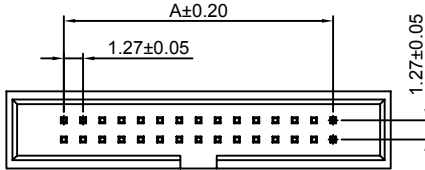
Reference Informations:

- *Material: Pin: Brass/Gold over Nickel
Insulator: Nylon 6T, UL94V-0
- *Mates with CJT A1276 series Dual Row Female Header
Optional Gold plating available but MOQ requested
- *Color: Black



Ordering Information:
A1276WV-N-2xXP - *** - ***
1 2 3

- Part No.
- Material:
(Blank): Nylon 6T, UL94V-0
GWT: Nylon 6T, UL94V-0, GWT 750 °C
- Finish:
(blank): Gold-flash
G15: 15µin (0.38µm) MIN. Select Gold (Mating Area)
100µin (2.54µm) MIN. Select Tin
G30: 30µin (0.76µm) MIN. Select Gold (Mating Area)
100µin (2.54µm) MIN. Select Tin
T: Tin over Nickel



Ordering Information & Dimensions:

PART NO.	Dimensions		PART NO.	Dimensions	
	A	B		A	B
2x2P	1.27	8.84	2x27P	33.02	40.59
2x3P	2.54	10.11	2x28P	34.29	41.86
2x4P	3.81	11.38	2x29P	35.56	43.13
2x5P	5.08	12.65	2x30P	36.83	44.40
2x6P	6.35	13.92	2x31P	38.10	45.67
2x7P	7.62	15.19	2x32P	39.37	46.94
2x8P	8.89	16.46	2x33P	40.64	48.21
2x9P	10.16	17.73	2x34P	41.91	49.48
2x10P	11.43	19.00	2x35P	43.18	50.75
2x11P	12.70	20.27	2x36P	44.45	52.02
2x12P	13.97	21.54	2x37P	45.72	53.29
2x13P	15.24	22.81	2x38P	46.99	54.56
2x14P	16.51	24.08	2x39P	48.26	55.83
2x15P	17.78	25.35	2x40P	49.53	57.10
2x16P	19.05	26.62	2x41P	50.80	58.37
2x17P	20.32	27.89	2x42P	52.07	59.64
2x18P	21.59	29.16	2x43P	53.34	60.91
2x19P	22.86	30.43	2x44P	54.61	62.18
2x20P	24.13	31.70	2x45P	55.88	63.45
2x21P	25.40	32.97	2x46P	57.15	64.72
2x22P	26.67	34.24	2x47P	58.42	65.99
2x23P	27.94	35.51	2x48P	59.69	67.26
2x24P	29.21	36.78	2x49P	60.96	68.53
2x25P	30.48	38.05	2x50P	62.23	69.80
2x26P	31.75	39.32			

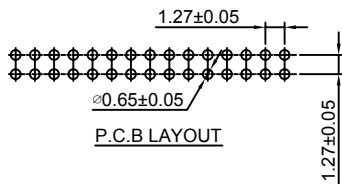
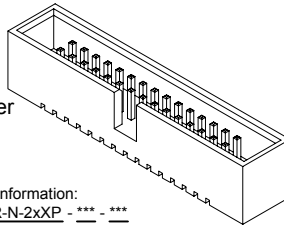
Unit: mm

A1276WR-N-2xXP

1.27mm Pitch 90° Dual Row Box Header

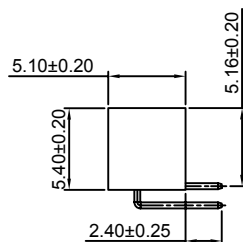
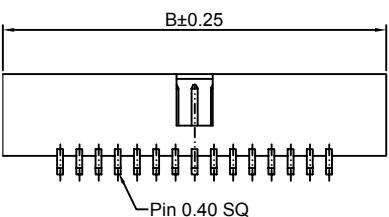
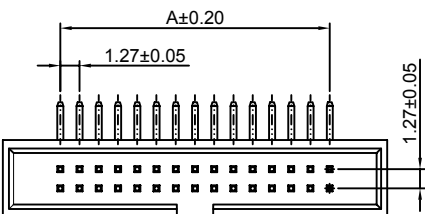
Reference Informations:

- *Material: Pin: Brass/Gold over Nickel
Insulator: Nylon 6T, UL94V-0
- *Mates with CJT A1276 series Dual Row Female Header
Optional Gold plating available but MOQ requested
- *Color: Black



Ordering Information:
A1276WR-N-2xXP - *** - ***
1 2 3

- Part No.
- Material:
(Blank): Nylon 6T, UL94V-0
GWT: Nylon 6T, UL94V-0, GWT 750 °C
- Finish:
(blank): Gold-flash
G15: 15µin (0.38µm) MIN. Select Gold (Mating Area)
100µin (2.54µm) MIN. Select Tin
G30: 30µin (0.76µm) MIN. Select Gold (Mating Area)
100µin (2.54µm) MIN. Select Tin
T: Tin over Nickel



Ordering Information & Dimensions:

PART NO.	Dimensions		PART NO.	Dimensions	
	A	B		A	B
2x2P	1.27	8.84	2x27P	33.02	40.59
2x3P	2.54	10.11	2x28P	34.29	41.86
2x4P	3.81	11.38	2x29P	35.56	43.13
2x5P	5.08	12.65	2x30P	36.83	44.40
2x6P	6.35	13.92	2x31P	38.10	45.67
2x7P	7.62	15.19	2x32P	39.37	46.94
2x8P	8.89	16.46	2x33P	40.64	48.21
2x9P	10.16	17.73	2x34P	41.91	49.48
2x10P	11.43	19.00	2x35P	43.18	50.75
2x11P	12.70	20.27	2x36P	44.45	52.02
2x12P	13.97	21.54	2x37P	45.72	53.29
2x13P	15.24	22.81	2x38P	46.99	54.56
2x14P	16.51	24.08	2x39P	48.26	55.83
2x15P	17.78	25.35	2x40P	49.53	57.10
2x16P	19.05	26.62	2x41P	50.80	58.37
2x17P	20.32	27.89	2x42P	52.07	59.64
2x18P	21.59	29.16	2x43P	53.34	60.91
2x19P	22.86	30.43	2x44P	54.61	62.18
2x20P	24.13	31.70	2x45P	55.88	63.45
2x21P	25.40	32.97	2x46P	57.15	64.72
2x22P	26.67	34.24	2x47P	58.42	65.99
2x23P	27.94	35.51	2x48P	59.69	67.26
2x24P	29.21	36.78	2x49P	60.96	68.53
2x25P	30.48	38.05	2x50P	62.23	69.80
2x26P	31.75	39.32			

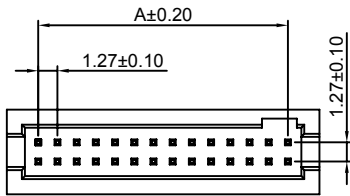
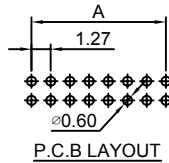
Unit: mm

A1276WVA-N-2xXP

1.27mm Pitch 180° Dual Row Box Header

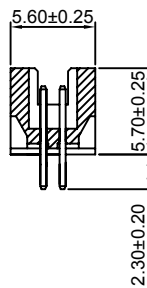
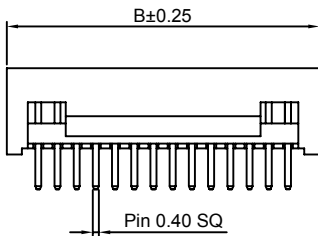
Reference Informations:

- *Material: Pin: Brass/Gold over Nickel
Insulator: Nylon 6T, UL94V-0
- *Mates with CJT A1276 series Dual Row Female Header
Optional Gold plating available but MOQ requested
- *Color: Black



Ordering Information:
A1276WVA-N-2xXP - *** - ***
1 2 3

1. Part No.
2. Material:
(Blank): Nylon 6T, UL94V-0
GWT: Nylon 6T, UL94V-0, GWT 750 °C
3. Finish:
(blank): Gold-flash
G15: 15µin (0.38µm) MIN. Select Gold (Mating Area)
100µin (2.54µm) MIN. Select Tin
G30: 30µin (0.76µm) MIN. Select Gold (Mating Area)
100µin (2.54µm) MIN. Select Tin
I: Tin over Nickel



Ordering Information & Dimensions:

PART NO.	Dimensions		PART NO.	Dimensions	
	A	B		A	B
2x2P	1.27	5.44	2x27P	33.02	37.19
2x3P	2.54	6.71	2x28P	34.29	38.46
2x4P	3.81	7.98	2x29P	35.56	39.73
2x5P	5.08	9.25	2x30P	36.83	41.00
2x6P	6.35	10.52	2x31P	38.10	42.27
2x7P	7.62	11.79	2x32P	39.37	43.54
2x8P	8.89	13.06	2x33P	40.64	44.81
2x9P	10.16	14.33	2x34P	41.91	46.08
2x10P	11.43	15.60	2x35P	43.18	47.35
2x11P	12.70	16.87	2x36P	44.45	48.62
2x12P	13.97	18.14	2x37P	45.72	49.89
2x13P	15.24	19.41	2x38P	46.99	51.16
2x14P	16.51	20.68	2x39P	48.26	52.43
2x15P	17.78	21.95	2x40P	49.53	53.70
2x16P	19.05	23.22	2x41P	50.80	54.97
2x17P	20.32	24.49	2x42P	52.07	56.24
2x18P	21.59	25.76	2x43P	53.34	57.51
2x19P	22.86	27.03	2x44P	54.61	58.78
2x20P	24.13	28.30	2x45P	55.88	60.05
2x21P	25.40	29.57	2x46P	57.15	61.32
2x22P	26.67	30.84	2x47P	58.42	62.59
2x23P	27.94	32.11	2x48P	59.69	63.86
2x24P	29.21	33.38	2x49P	60.96	65.13
2x25P	30.48	34.65	2x50P	62.23	66.40
2x26P	31.75	35.92			

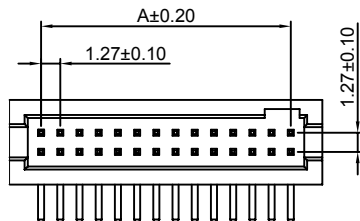
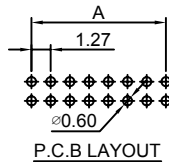
Unit: mm

A1276WRA-N-2xXP

1.27mm Pitch 90° Dual Row Box Header

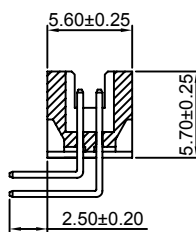
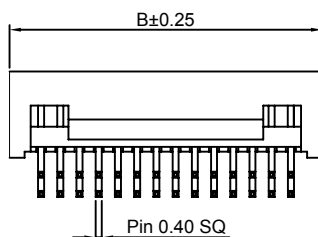
Reference Informations:

- *Material: Pin: Brass/Gold over Nickel
Insulator: Nylon 6T, UL94V-0
- *Mates with CJT A1276 series Dual Row Female Header
Optional Gold plating available but MOQ requested
- *Color: Black



Ordering Information:
A1276WRA-N-2xXP - *** - ***
1 2 3

1. Part No.
2. Material:
(Blank): Nylon 6T, UL94V-0
GWT: Nylon 6T, UL94V-0, GWT 750 °C
3. Finish:
(blank): Gold-flash
G15: 15µin (0.38µm) MIN. Select Gold (Mating Area)
100µin (2.54µm) MIN. Select Tin
G30: 30µin (0.76µm) MIN. Select Gold (Mating Area)
100µin (2.54µm) MIN. Select Tin
I: Tin over Nickel



Ordering Information & Dimensions:

PART NO.	Dimensions		PART NO.	Dimensions	
	A	B		A	B
2x2P	1.27	5.44	2x27P	33.02	37.19
2x3P	2.54	6.71	2x28P	34.29	38.46
2x4P	3.81	7.98	2x29P	35.56	39.73
2x5P	5.08	9.25	2x30P	36.83	41.00
2x6P	6.35	10.52	2x31P	38.10	42.27
2x7P	7.62	11.79	2x32P	39.37	43.54
2x8P	8.89	13.06	2x33P	40.64	44.81
2x9P	10.16	14.33	2x34P	41.91	46.08
2x10P	11.43	15.60	2x35P	43.18	47.35
2x11P	12.70	16.87	2x36P	44.45	48.62
2x12P	13.97	18.14	2x37P	45.72	49.89
2x13P	15.24	19.41	2x38P	46.99	51.16
2x14P	16.51	20.68	2x39P	48.26	52.43
2x15P	17.78	21.95	2x40P	49.53	53.70
2x16P	19.05	23.22	2x41P	50.80	54.97
2x17P	20.32	24.49	2x42P	52.07	56.24
2x18P	21.59	25.76	2x43P	53.34	57.51
2x19P	22.86	27.03	2x44P	54.61	58.78
2x20P	24.13	28.30	2x45P	55.88	60.05
2x21P	25.40	29.57	2x46P	57.15	61.32
2x22P	26.67	30.84	2x47P	58.42	62.59
2x23P	27.94	32.11	2x48P	59.69	63.86
2x24P	29.21	33.38	2x49P	60.96	65.13
2x25P	30.48	34.65	2x50P	62.23	66.40
2x26P	31.75	35.92			

Unit: mm

A1276WV-N-S-2xXP

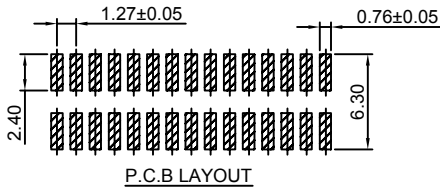
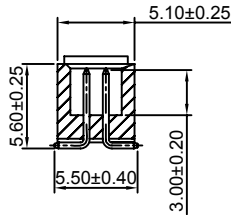
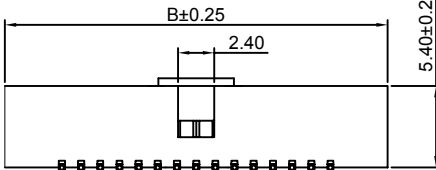
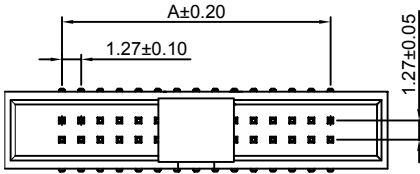
1.27mm Pitch 180° Dual Row Box Header - SMT TYPE

Reference Informations:

- *Material: Pin: Brass/Gold over Nickel
Insulator: Nylon 6T, UL94V-0
- *Mates with CJT A1276 series Dual Row Female Header
Optional Gold plating available but MOQ requested
- *Color: Black

Ordering Information:
A1276WV-N-S-2xXP - *** - ***
1 2 3

1. Part No.
2. Material:
(Blank): Nylon 6T, UL94V-0
GWT: Nylon 6T, UL94V-0, GWT 750 °C
3. Finish:
(blank): Gold-flash
G15: 15µin (0.38µm) MIN. Select Gold (Mating Area)
100µin (2.54µm) MIN. Select Tin
G30: 30µin (0.76µm) MIN. Select Gold (Mating Area)
100µin (2.54µm) MIN. Select Tin
T: Tin over Nickel



Ordering Information & Dimensions:

PART NO.	Dimensions		PART NO.	Dimensions	
	A	B		A	B
2x2P	1.27	8.84	2x27P	33.02	40.59
2x3P	2.54	10.11	2x28P	34.29	41.86
2x4P	3.81	11.38	2x29P	35.56	43.13
2x5P	5.08	12.65	2x30P	36.83	44.40
2x6P	6.35	13.92	2x31P	38.10	45.67
2x7P	7.62	15.19	2x32P	39.37	46.94
2x8P	8.89	16.46	2x33P	40.64	48.21
2x9P	10.16	17.73	2x34P	41.91	49.48
2x10P	11.43	19.00	2x35P	43.18	50.75
2x11P	12.70	20.27	2x36P	44.45	52.02
2x12P	13.97	21.54	2x37P	45.72	53.29
2x13P	15.24	22.81	2x38P	46.99	54.56
2x14P	16.51	24.08	2x39P	48.26	55.83
2x15P	17.78	25.35	2x40P	49.53	57.10
2x16P	19.05	26.62	2x41P	50.80	58.37
2x17P	20.32	27.89	2x42P	52.07	59.64
2x18P	21.59	29.16	2x43P	53.34	60.91
2x19P	22.86	30.43	2x44P	54.61	62.18
2x20P	24.13	31.70	2x45P	55.88	63.45
2x21P	25.40	32.97	2x46P	57.15	64.72
2x22P	26.67	34.24	2x47P	58.42	65.99
2x23P	27.94	35.51	2x48P	59.69	67.26
2x24P	29.21	36.78	2x49P	60.96	68.53
2x25P	30.48	38.05	2x50P	62.23	69.80
2x26P	31.75	39.32			

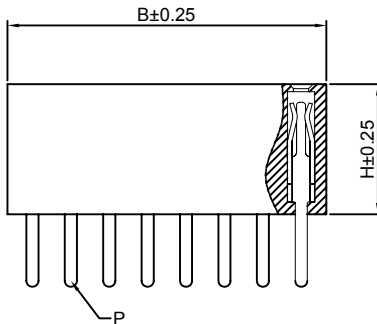
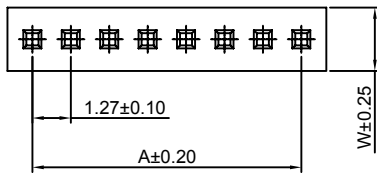
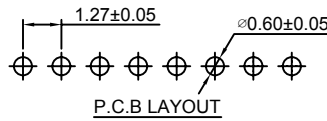
Unit: mm

A1276HWV-XP

1.27mm Pitch 180° Single Row Female Header

Reference Informations:

- *Material:Pin:Phosphor Bronze/Gold over Nickel
Insulator:Nylon 6T,UL94V-0
- *Mates with CJT A1276 series Single Row Pin Header
Optional Gold plating available but MOQ requested
- *Color:Black



Ordering Information:
A1276HWV-XP - - - - - -

- Part No.
- Size(H):
(blank):4.30mm(P:Pin 0.50x0.15)
H34:3.40mm(P:Pin 0.50x0.15)
H20:2.00mm(P:Pin 0.40x0.15)
- Size(W):
(blank):2.10mm
W18:1.80mm
- Size(D):
(blank):2.40mm
D18:1.80mm
- Material:
(Blank):Nylon 6T,UL94V-0
GWT:Nylon 6T,UL94V-0,GWT 750 °C
- Finish:
(blank):Gold-flash
G15:15µin (0.38µm) MIN.Select Gold(Mating Area)
100µin (2.54µm) MIN.Select Tin
G30:30µin (0.76µm) MIN.Select Gold(Mating Area)
100µin (2.54µm) MIN.Select Tin
T: Tin over Nickel

Ordering Information & Dimensions:

PART NO.	Dimensions		PART NO.	Dimensions	
	A	B		A	B
1P	----	1.67	26P	31.75	33.42
2P	1.27	2.94	27P	33.02	34.69
3P	2.54	4.21	28P	34.29	35.96
4P	3.81	5.48	29P	35.56	37.23
5P	5.08	6.75	30P	36.83	38.50
6P	6.35	8.02	31P	38.10	39.77
7P	7.62	9.29	32P	39.37	41.04
8P	8.89	10.56	33P	40.64	42.31
9P	10.16	11.83	34P	41.91	43.58
10P	11.43	13.10	35P	43.18	44.85
11P	12.70	14.37	36P	44.45	46.12
12P	13.97	15.64	37P	45.72	47.39
13P	15.24	16.91	38P	46.99	48.66
14P	16.51	18.18	39P	48.26	49.93
15P	17.78	19.45	40P	49.53	51.20
16P	19.05	20.72	41P	50.80	52.47
17P	20.32	21.99	42P	52.07	53.74
18P	21.59	23.26	43P	53.34	55.01
19P	22.86	24.53	44P	54.61	56.28
20P	24.13	25.80	45P	55.88	57.55
21P	25.40	27.07	46P	57.15	58.82
22P	26.67	28.34	47P	58.42	60.09
23P	27.94	29.61	48P	59.69	61.36
24P	29.21	30.88	49P	60.96	62.63
25P	30.48	32.15	50P	62.23	63.90

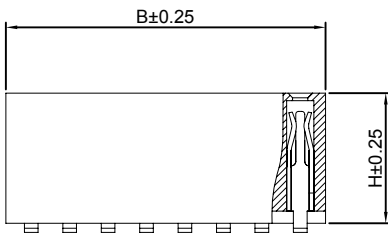
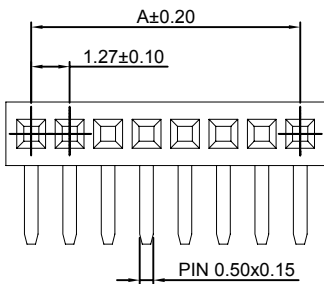
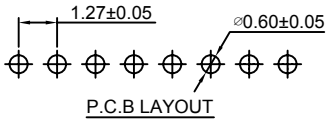
Unit: mm

A1276HWR-XP

1.27mm Pitch 90° Single Row Female Header

Reference Informations:

- *Material:Pin:Phosphor Bronze/Gold over Nickel
Insulator:Nylon 6T,UL94V-0
- *Mates with CJT A1276 series Single Row Pin Header
Optional Gold plating available but MOQ requested
- *Color:Black



Ordering Information:
A1276HWR-XP - - - -

- Part No.
- Size(H):
(blank):4.30mm(D:2.40mm)
H34:3.40mm(D:2.00mm)
- Material:
(Blank):Nylon 6T,UL94V-0
GWT:Nylon 6T,UL94V-0,GWT 750 °C
- Finish:
(blank):Gold-flash
G15:15µin (0.38µm) MIN.Select Gold(Mating Area)
100µin (2.54µm) MIN.Select Tin
G30:30µin (0.76µm) MIN.Select Gold(Mating Area)
100µin (2.54µm) MIN.Select Tin
T: Tin over Nickel

Ordering Information & Dimensions:

PART NO.	Dimensions		PART NO.	Dimensions	
	A	B		A	B
1P	----	1.67	26P	31.75	33.42
2P	1.27	2.94	27P	33.02	34.69
3P	2.54	4.21	28P	34.29	35.96
4P	3.81	5.48	29P	35.56	37.23
5P	5.08	6.75	30P	36.83	38.50
6P	6.35	8.02	31P	38.10	39.77
7P	7.62	9.29	32P	39.37	41.04
8P	8.89	10.56	33P	40.64	42.31
9P	10.16	11.83	34P	41.91	43.58
10P	11.43	13.10	35P	43.18	44.85
11P	12.70	14.37	36P	44.45	46.12
12P	13.97	15.64	37P	45.72	47.39
13P	15.24	16.91	38P	46.99	48.66
14P	16.51	18.18	39P	48.26	49.93
15P	17.78	19.45	40P	49.53	51.20
16P	19.05	20.72	41P	50.80	52.47
17P	20.32	21.99	42P	52.07	53.74
18P	21.59	23.26	43P	53.34	55.01
19P	22.86	24.53	44P	54.61	56.28
20P	24.13	25.80	45P	55.88	57.55
21P	25.40	27.07	46P	57.15	58.82
22P	26.67	28.34	47P	58.42	60.09
23P	27.94	29.61	48P	59.69	61.36
24P	29.21	30.88	49P	60.96	62.63
25P	30.48	32.15	50P	62.23	63.90

Unit: mm

A1276HWV-S-XP-A

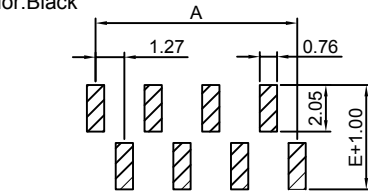
1.27mm Pitch 180° Single Row Female Header - SMT A TYPE

Reference Informations:

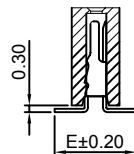
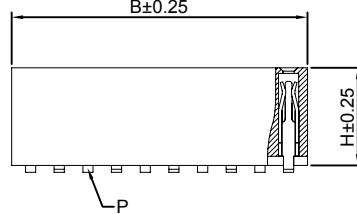
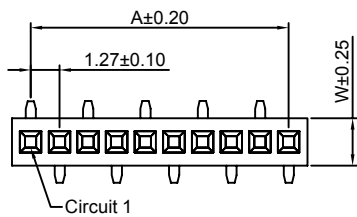
*Material:Pin:Phosphor Bronze/Gold over Nickel
Insulator:Nylon 6T,UL94V-0

*Mates with CJT A1276 series Single Row Pin Header
Optional Gold plating available but MOQ requested

*Color:Black



P.C.B LAYOUT



Ordering Information:

A1276HWV-S-XP-A - *** - *** - *** - *** - ***
1 2 3 4 5 6

- Part No.
- Size(H):
(blank):4.30mm(P:Pin 0.50x0.15)
H57:5.70mm(P:Pin 0.40x0.20)
H34:3.40mm(P:Pin 0.50x0.15)
H20:2.00mm(P:Pin 0.40x0.15)
- Size(W):
(blank):2.10mm
W25:2.50mm
W18:1.80mm
- Size(E):
(blank):3.60mm
E43:4.30mm
E34:3.40mm
- Material:
(Blank):Nylon 6T,UL94V-0
GWT:Nylon 6T,UL94V-0,GWT 750 °C
- Finish:
(blank):Gold-flash
G15:15µin (0.38µm) MIN.Select Gold(Mating Area)
100µin (2.54µm) MIN.Select Tin
G30:30µin (0.76µm) MIN.Select Gold(Mating Area)
100µin (2.54µm) MIN.Select Tin
T:Tin over Nickel

Ordering Information & Dimensions:

PART NO.	Dimensions		PART NO.	Dimensions	
	A	B		A	B
2P	1.27	2.94	27P	33.02	34.69
3P	2.54	4.21	28P	34.29	35.96
4P	3.81	5.48	29P	35.56	37.23
5P	5.08	6.75	30P	36.83	38.50
6P	6.35	8.02	31P	38.10	39.77
7P	7.62	9.29	32P	39.37	41.04
8P	8.89	10.56	33P	40.64	42.31
9P	10.16	11.83	34P	41.91	43.58
10P	11.43	13.10	35P	43.18	44.85
11P	12.70	14.37	36P	44.45	46.12
12P	13.97	15.64	37P	45.72	47.39
13P	15.24	16.91	38P	46.99	48.66
14P	16.51	18.18	39P	48.26	49.93
15P	17.78	19.45	40P	49.53	51.20
16P	19.05	20.72	41P	50.80	52.47
17P	20.32	21.99	42P	52.07	53.74
18P	21.59	23.26	43P	53.34	55.01
19P	22.86	24.53	44P	54.61	56.28
20P	24.13	25.80	45P	55.88	57.55
21P	25.40	27.07	46P	57.15	58.82
22P	26.67	28.34	47P	58.42	60.09
23P	27.94	29.61	48P	59.69	61.36
24P	29.21	30.88	49P	60.96	62.63
25P	30.48	32.15	50P	62.23	63.90
26P	31.75	33.42			

Unit: mm

A1276HWV-S-XP-B

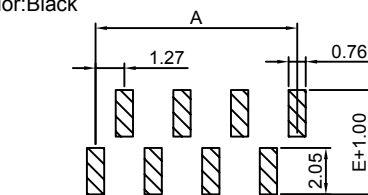
1.27mm Pitch 180° Single Row Female Header - SMT B TYPE

Reference Informations:

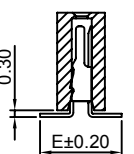
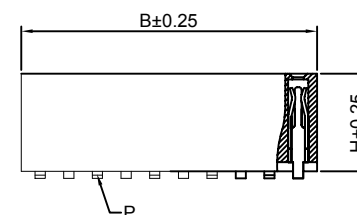
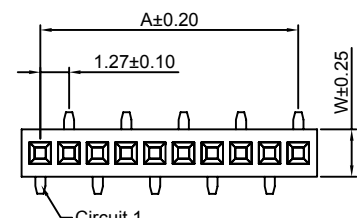
*Material:Pin:Phosphor Bronze/Gold over Nickel
Insulator:Nylon 6T,UL94V-0

*Mates with CJT A1276 series Single Row Pin Header
Optional Gold plating available but MOQ requested

*Color:Black



P.C.B LAYOUT



Ordering Information:

A1276HWV-S-XP-B - *** - *** - *** - *** - ***
1 2 3 4 5 6

- Part No.
- Size(H):
(blank):4.30mm(P:Pin 0.50x0.15)
H57:5.70mm(P:Pin 0.40x0.20)
H34:3.40mm(P:Pin 0.50x0.15)
H20:2.00mm(P:Pin 0.40x0.15)
- Size(W):
(blank):2.10mm
W25:2.50mm
W18:1.80mm
- Size(E):
(blank):3.60mm
E43:4.30mm
E34:3.40mm
- Material:
(Blank):Nylon 6T,UL94V-0
GWT:Nylon 6T,UL94V-0,GWT 750 °C
- Finish:
(blank):Gold-flash
G15:15µin (0.38µm) MIN.Select Gold(Mating Area)
100µin (2.54µm) MIN.Select Tin
G30:30µin (0.76µm) MIN.Select Gold(Mating Area)
100µin (2.54µm) MIN.Select Tin
T:Tin over Nickel

Ordering Information & Dimensions:

PART NO.	Dimensions		PART NO.	Dimensions	
	A	B		A	B
2P	1.27	2.94	27P	33.02	34.69
3P	2.54	4.21	28P	34.29	35.96
4P	3.81	5.48	29P	35.56	37.23
5P	5.08	6.75	30P	36.83	38.50
6P	6.35	8.02	31P	38.10	39.77
7P	7.62	9.29	32P	39.37	41.04
8P	8.89	10.56	33P	40.64	42.31
9P	10.16	11.83	34P	41.91	43.58
10P	11.43	13.10	35P	43.18	44.85
11P	12.70	14.37	36P	44.45	46.12
12P	13.97	15.64	37P	45.72	47.39
13P	15.24	16.91	38P	46.99	48.66
14P	16.51	18.18	39P	48.26	49.93
15P	17.78	19.45	40P	49.53	51.20
16P	19.05	20.72	41P	50.80	52.47
17P	20.32	21.99	42P	52.07	53.74
18P	21.59	23.26	43P	53.34	55.01
19P	22.86	24.53	44P	54.61	56.28
20P	24.13	25.80	45P	55.88	57.55
21P	25.40	27.07	46P	57.15	58.82
22P	26.67	28.34	47P	58.42	60.09
23P	27.94	29.61	48P	59.69	61.36
24P	29.21	30.88	49P	60.96	62.63
25P	30.48	32.15	50P	62.23	63.90
26P	31.75	33.42			

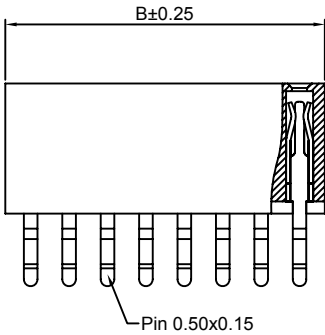
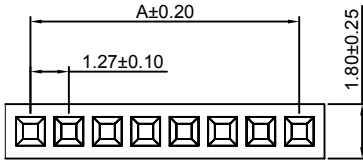
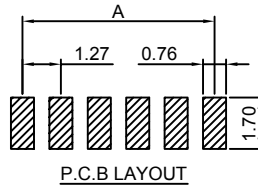
Unit: mm

A1276HWR-S-XP

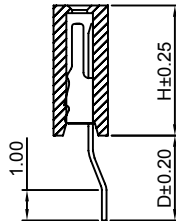
1.27mm Pitch 90° Single Row Female Header - SMT TYPE

Reference Informations:

- *Material:Pin:Phosphor Bronze/Gold over Nickel
Insulator:Nylon 6T,UL94V-0
- *Mates with CJT A1276 series Single Row Pin Header
Optional Gold plating available but MOQ requested
- *Color:Black



- Ordering Information:
A1276HWR-S-XP - *** - *** - ***
- 1.Part No.
2.Size(H):
(blank):4.30mm(D:2.80mm)
H34:3.40mm(D:1.70mm)
- 3.Material:
(blank):Nylon 6T,UL94V-0
GWT:Nylon 6T,UL94V-0,GWT 750°C
- 4.Finish:
(blank):Gold-flash
G15:15µm (0.38µm) MIN.Select Gold(Mating Area)
100µm (2.54µm) MIN.Select Tin
G30:30µm (0.76µm) MIN.Select Gold(Mating Area)
100µm (2.54µm) MIN.Select Tin
T: Tin over Nickel



Ordering Information & Dimensions:

PART NO.	Dimensions		PART NO.	Dimensions	
	A	B		A	B
2P	1.27	2.94	27P	33.02	34.69
3P	2.54	4.21	28P	34.29	35.96
4P	3.81	5.48	29P	35.56	37.23
5P	5.08	6.75	30P	36.83	38.50
6P	6.35	8.02	31P	38.10	39.77
7P	7.62	9.29	32P	39.37	41.04
8P	8.89	10.56	33P	40.64	42.31
9P	10.16	11.83	34P	41.91	43.58
10P	11.43	13.10	35P	43.18	44.85
11P	12.70	14.37	36P	44.45	46.12
12P	13.97	15.64	37P	45.72	47.39
13P	15.24	16.91	38P	46.99	48.66
14P	16.51	18.18	39P	48.26	49.93
15P	17.78	19.45	40P	49.53	51.20
16P	19.05	20.72	41P	50.80	52.47
17P	20.32	21.99	42P	52.07	53.74
18P	21.59	23.26	43P	53.34	55.01
19P	22.86	24.53	44P	54.61	56.28
20P	24.13	25.80	45P	55.88	57.55
21P	25.40	27.07	46P	57.15	58.82
22P	26.67	28.34	47P	58.42	60.09
23P	27.94	29.61	48P	59.69	61.36
24P	29.21	30.88	49P	60.96	62.63
25P	30.48	32.15	50P	62.23	63.90
26P	31.75	33.42			

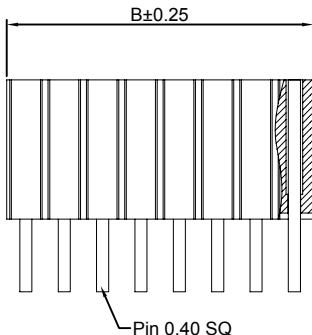
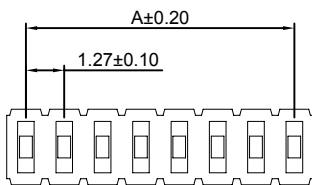
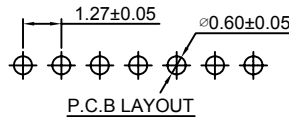
Unit: mm

A1276HWV-XP-H46-Y

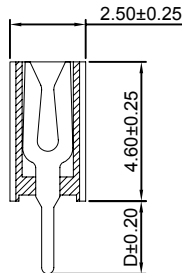
1.27mm Pitch 180° Single Row Female Header

Reference Informations:

- *Material:Pin:Phosphor Bronze/Gold over Nickel
Insulator:Nylon 6T,UL94V-0
- *Mates with CJT A1276 series Single Row Pin Header
Optional Gold plating available but MOQ requested
- *Color:Black



- Ordering Information:
A1276HWV-XP-H46-Y - *** - *** - ***
- 1.Part No.
2.Size(D):
(blank):2.40mm
D30:3.00mm
- 3.Material:
(Blank):Nylon 6T,UL94V-0
GWT:Nylon 6T,UL94V-0,GWT 750°C
- 4.Finish:
(blank):Gold-flash
G15:15µm (0.38µm) MIN.Select Gold(Mating Area)
100µm (2.54µm) MIN.Select Tin
G30:30µm (0.76µm) MIN.Select Gold(Mating Area)
100µm (2.54µm) MIN.Select Tin
T: Tin over Nickel



Ordering Information & Dimensions:

PART NO.	Dimensions		PART NO.	Dimensions	
	A	B		A	B
2P	1.27	2.54	27P	33.02	34.29
3P	2.54	3.81	28P	34.29	35.56
4P	3.81	5.08	29P	35.56	36.83
5P	5.08	6.35	30P	36.83	38.10
6P	6.35	7.62	31P	38.10	39.37
7P	7.62	8.89	32P	39.37	40.64
8P	8.89	10.16	33P	40.64	41.91
9P	10.16	11.43	34P	41.91	43.18
10P	11.43	12.70	35P	43.18	44.45
11P	12.70	13.97	36P	44.45	45.72
12P	13.97	15.24	37P	45.72	46.99
13P	15.24	16.51	38P	46.99	48.26
14P	16.51	17.78	39P	48.26	49.53
15P	17.78	19.05	40P	49.53	50.80
16P	19.05	20.32	41P	50.80	52.07
17P	20.32	21.59	42P	52.07	53.34
18P	21.59	22.86	43P	53.34	54.61
19P	22.86	24.13	44P	54.61	55.88
20P	24.13	25.40	45P	55.88	57.15
21P	25.40	26.67	46P	57.15	58.42
22P	26.67	27.94	47P	58.42	59.69
23P	27.94	29.21	48P	59.69	60.96
24P	29.21	30.48	49P	60.96	62.23
25P	30.48	31.75	50P	62.23	63.50
26P	31.75	33.02			

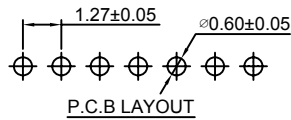
Unit: mm

A1276HWR-XP-H46-Y

1.27mm Pitch 90° Single Row Female Header

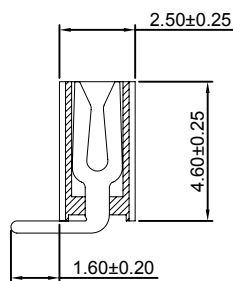
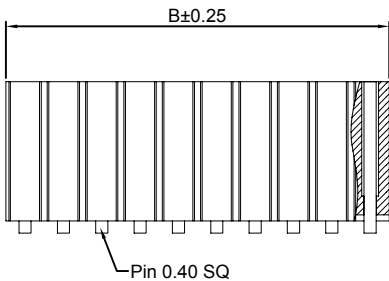
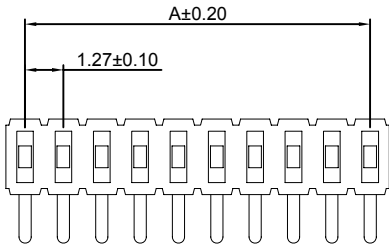
Reference Informations:

- *Material: Pin: Phosphor Bronze/Gold over Nickel
Insulator: Nylon 6T, UL94V-0
- *Mates with CJT A1276 series Single Row Pin Header
Optional Gold plating available but MOQ requested
- *Color: Black



Ordering Information:
A1276HWR-XP-H46-Y - *** - ***
1 2 3

1. Part No.
2. Material:
(Blank): Nylon 6T, UL94V-0
GWT: Nylon 6T, UL94V-0, GWT 750 °C
3. Finish:
(blank): Gold-flash
G15: 15µin (0.38µm) MIN. Select Gold (Mating Area)
100µin (2.54µm) MIN. Select Tin
G30: 30µin (0.76µm) MIN. Select Gold (Mating Area)
100µin (2.54µm) MIN. Select Tin
I: Tin over Nickel



Ordering Information & Dimensions:

PART NO.	Dimensions		PART NO.	Dimensions	
	A	B		A	B
2P	1.27	2.54	27P	33.02	34.29
3P	2.54	3.81	28P	34.29	35.56
4P	3.81	5.08	29P	35.56	36.83
5P	5.08	6.35	30P	36.83	38.10
6P	6.35	7.62	31P	38.10	39.37
7P	7.62	8.89	32P	39.37	40.64
8P	8.89	10.16	33P	40.64	41.91
9P	10.16	11.43	34P	41.91	43.18
10P	11.43	12.70	35P	43.18	44.45
11P	12.70	13.97	36P	44.45	45.72
12P	13.97	15.24	37P	45.72	46.99
13P	15.24	16.51	38P	46.99	48.26
14P	16.51	17.78	39P	48.26	49.53
15P	17.78	19.05	40P	49.53	50.80
16P	19.05	20.32	41P	50.80	52.07
17P	20.32	21.59	42P	52.07	53.34
18P	21.59	22.86	43P	53.34	54.61
19P	22.86	24.13	44P	54.61	55.88
20P	24.13	25.40	45P	55.88	57.15
21P	25.40	26.67	46P	57.15	58.42
22P	26.67	27.94	47P	58.42	59.69
23P	27.94	29.21	48P	59.69	60.96
24P	29.21	30.48	49P	60.96	62.23
25P	30.48	31.75	50P	62.23	63.50
26P	31.75	33.02			

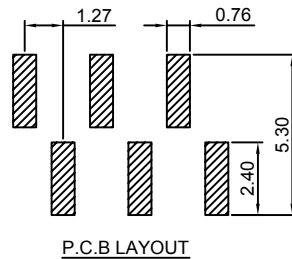
Unit: mm

A1276HWV-S-XP-A-H46-Y

1.27mm Pitch 180° Single Row Female Header - SMT A TYPE

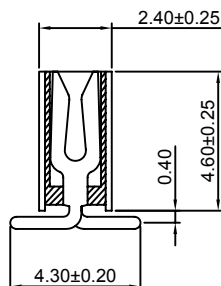
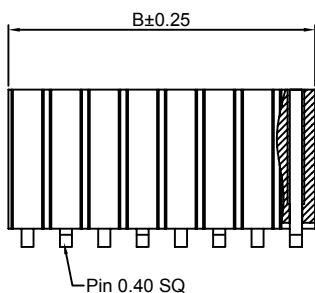
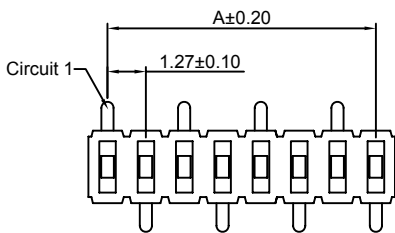
Reference Informations:

- *Material: Pin: Phosphor Bronze/Gold over Nickel
Insulator: Nylon 6T, UL94V-0
- *Mates with CJT A1276 series Single Row Pin Header
Optional Gold plating available but MOQ requested
- *Color: Black



Ordering Information:
A1276HWV-S-XP-A-H46-Y - *** - ***
1 2 3

1. Part No.
2. Material:
(Blank): Nylon 6T, UL94V-0
GWT: Nylon 6T, UL94V-0, GWT 750 °C
3. Finish:
(blank): Gold-flash
G15: 15µin (0.38µm) MIN. Select Gold (Mating Area)
100µin (2.54µm) MIN. Select Tin
G30: 30µin (0.76µm) MIN. Select Gold (Mating Area)
100µin (2.54µm) MIN. Select Tin
I: Tin over Nickel



Ordering Information & Dimensions:

PART NO.	Dimensions		PART NO.	Dimensions	
	A	B		A	B
2P	1.27	2.54	27P	33.02	34.29
3P	2.54	3.81	28P	34.29	35.56
4P	3.81	5.08	29P	35.56	36.83
5P	5.08	6.35	30P	36.83	38.10
6P	6.35	7.62	31P	38.10	39.37
7P	7.62	8.89	32P	39.37	40.64
8P	8.89	10.16	33P	40.64	41.91
9P	10.16	11.43	34P	41.91	43.18
10P	11.43	12.70	35P	43.18	44.45
11P	12.70	13.97	36P	44.45	45.72
12P	13.97	15.24	37P	45.72	46.99
13P	15.24	16.51	38P	46.99	48.26
14P	16.51	17.78	39P	48.26	49.53
15P	17.78	19.05	40P	49.53	50.80
16P	19.05	20.32	41P	50.80	52.07
17P	20.32	21.59	42P	52.07	53.34
18P	21.59	22.86	43P	53.34	54.61
19P	22.86	24.13	44P	54.61	55.88
20P	24.13	25.40	45P	55.88	57.15
21P	25.40	26.67	46P	57.15	58.42
22P	26.67	27.94	47P	58.42	59.69
23P	27.94	29.21	48P	59.69	60.96
24P	29.21	30.48	49P	60.96	62.23
25P	30.48	31.75	50P	62.23	63.50
26P	31.75	33.02			

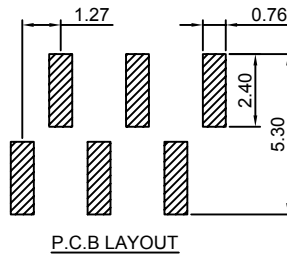
Unit: mm

A1276HWV-S-XP-B-H46-Y

1.27mm Pitch 180° Single Row Female Header - SMT B TYPE

Reference Informations:

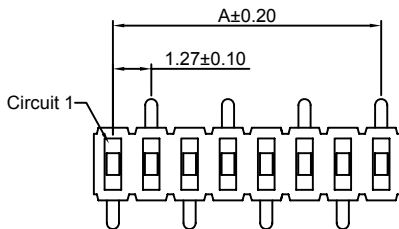
- *Material:Pin:Phosphor Bronze/Gold over Nickel
Insulator:Nylon 6T,UL94V-0
- *Mates with CJT A1276 series Single Row Pin Header
Optional Gold plating available but MOQ requested
- *Color:Black



Ordering Information & Dimensions:

PART NO.	Dimensions		PART NO.	Dimensions	
	A	B		A	B
2P	1.27	2.54	27P	33.02	34.29
3P	2.54	3.81	28P	34.29	35.56
4P	3.81	5.08	29P	35.56	36.83
5P	5.08	6.35	30P	36.83	38.10
6P	6.35	7.62	31P	38.10	39.37
7P	7.62	8.89	32P	39.37	40.64
8P	8.89	10.16	33P	40.64	41.91
9P	10.16	11.43	34P	41.91	43.18
10P	11.43	12.70	35P	43.18	44.45
11P	12.70	13.97	36P	44.45	45.72
12P	13.97	15.24	37P	45.72	46.99
13P	15.24	16.51	38P	46.99	48.26
14P	16.51	17.78	39P	48.26	49.53
15P	17.78	19.05	40P	49.53	50.80
16P	19.05	20.32	41P	50.80	52.07
17P	20.32	21.59	42P	52.07	53.34
18P	21.59	22.86	43P	53.34	54.61
19P	22.86	24.13	44P	54.61	55.88
20P	24.13	25.40	45P	55.88	57.15
21P	25.40	26.67	46P	57.15	58.42
22P	26.67	27.94	47P	58.42	59.69
23P	27.94	29.21	48P	59.69	60.96
24P	29.21	30.48	49P	60.96	62.23
25P	30.48	31.75	50P	62.23	63.50
26P	31.75	33.02			

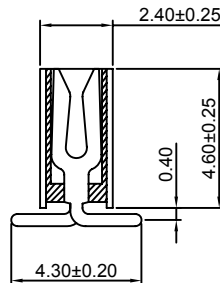
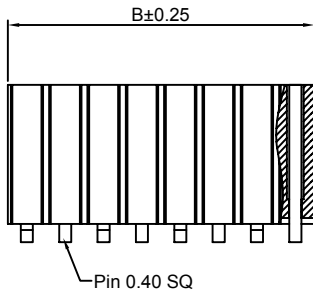
Unit: mm



Ordering Information:

A1276HWV-S-XP-B-H46-Y - *** - ***
1 2 3

- Part No.
- Material:
(Blank):Nylon 6T,UL94V-0
GWT:Nylon 6T,UL94V-0,GWT 750 °C
- Finish:
(blank):Gold-flash
G15:15µin (0.38µm) MIN.Select Gold(Mating Area)
100µin (2.54µm) MIN.Select Tin
G30:30µin (0.76µm) MIN.Select Gold(Mating Area)
100µin (2.54µm) MIN.Select Tin
T: Tin over Nickel

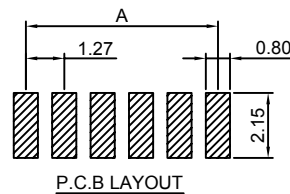


A1276HWR-S-XP-H57-Y

1.27mm Pitch 90° Single Row Female Header -SMT TYPE

Reference Informations:

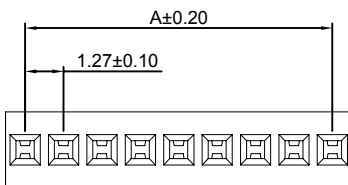
- *Material:Pin:Phosphor Bronze/Gold over Nickel
Insulator:Nylon 6T,UL94V-0
- *Mates with CJT A1276 series Single Row Pin Header
Optional Gold plating available but MOQ requested
- *Color:Black



Ordering Information & Dimensions:

PART NO.	Dimensions		PART NO.	Dimensions	
	A	B		A	B
2P	1.27	2.54	27P	33.02	34.29
3P	2.54	3.81	28P	34.29	35.56
4P	3.81	5.08	29P	35.56	36.83
5P	5.08	6.35	30P	36.83	38.10
6P	6.35	7.62	31P	38.10	39.37
7P	7.62	8.89	32P	39.37	40.64
8P	8.89	10.16	33P	40.64	41.91
9P	10.16	11.43	34P	41.91	43.18
10P	11.43	12.70	35P	43.18	44.45
11P	12.70	13.97	36P	44.45	45.72
12P	13.97	15.24	37P	45.72	46.99
13P	15.24	16.51	38P	46.99	48.26
14P	16.51	17.78	39P	48.26	49.53
15P	17.78	19.05	40P	49.53	50.80
16P	19.05	20.32	41P	50.80	52.07
17P	20.32	21.59	42P	52.07	53.34
18P	21.59	22.86	43P	53.34	54.61
19P	22.86	24.13	44P	54.61	55.88
20P	24.13	25.40	45P	55.88	57.15
21P	25.40	26.67	46P	57.15	58.42
22P	26.67	27.94	47P	58.42	59.69
23P	27.94	29.21	48P	59.69	60.96
24P	29.21	30.48	49P	60.96	62.23
25P	30.48	31.75	50P	62.23	63.50
26P	31.75	33.02			

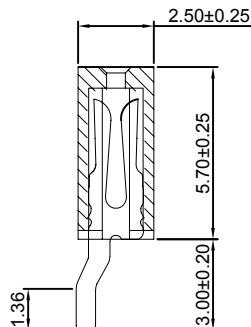
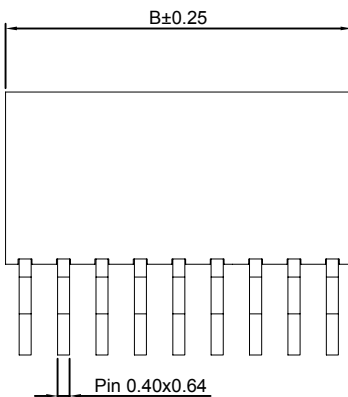
Unit: mm



Ordering Information:

A1276HWR-S-XP-H57-Y - *** - ***
1 2 3

- Part No.
- Material:
(Blank):Nylon 6T,UL94V-0
GWT:Nylon 6T,UL94V-0,GWT 750 °C
- Finish:
(blank):Gold-flash
G15:15µin (0.38µm) MIN.Select Gold(Mating Area)
100µin (2.54µm) MIN.Select Tin
G30:30µin (0.76µm) MIN.Select Gold(Mating Area)
100µin (2.54µm) MIN.Select Tin
T: Tin over Nickel

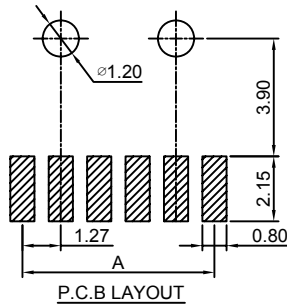
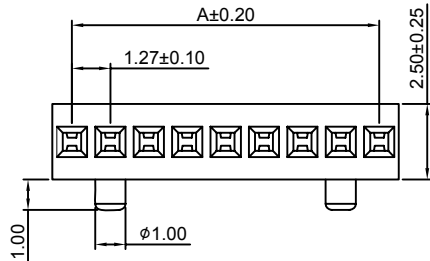


A1276HWR-S-F-XP-H57-Y

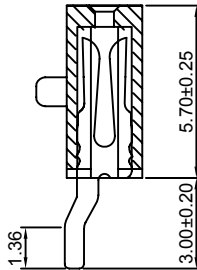
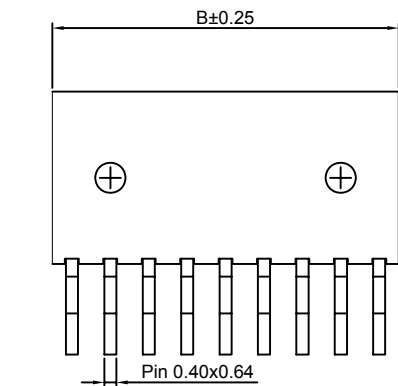
1.27mm Pitch 90° Single Row Female Header - SMT TYPE

Reference Informations:

- *Material: Pin: Phosphor Bronze/Gold over Nickel
Insulator: Nylon 6T, UL94V-0
- *Mates with CJT A1276 series Single Row Pin Header
Optional Gold plating available but MOQ requested
- *Color: Black



- Ordering Information:
A1276HWR-S-F-XP-H57-Y - *** - ***
1. Part No.
2. Material:
(Blank): Nylon 6T, UL94V-0
GWT: Nylon 6T, UL94V-0, GWT 750 °C
3. Finish:
(blank): Gold-flash
G15: 15µm (0.38µm) MIN. Select Gold (Mating Area)
100µm (2.54µm) MIN. Select Tin
G30: 30µm (0.76µm) MIN. Select Gold (Mating Area)
100µm (2.54µm) MIN. Select Tin
T: Tin over Nickel



Ordering Information & Dimensions:

PART NO.	Dimensions		PART NO.	Dimensions	
	A	B		A	B
2P	1.27	2.54	27P	33.02	34.29
3P	2.54	3.81	28P	34.29	35.56
4P	3.81	5.08	29P	35.56	36.83
5P	5.08	6.35	30P	36.83	38.10
6P	6.35	7.62	31P	38.10	39.37
7P	7.62	8.89	32P	39.37	40.64
8P	8.89	10.16	33P	40.64	41.91
9P	10.16	11.43	34P	41.91	43.18
10P	11.43	12.70	35P	43.18	44.45
11P	12.70	13.97	36P	44.45	45.72
12P	13.97	15.24	37P	45.72	46.99
13P	15.24	16.51	38P	46.99	48.26
14P	16.51	17.78	39P	48.26	49.53
15P	17.78	19.05	40P	49.53	50.80
16P	19.05	20.32	41P	50.80	52.07
17P	20.32	21.59	42P	52.07	53.34
18P	21.59	22.86	43P	53.34	54.61
19P	22.86	24.13	44P	54.61	55.88
20P	24.13	25.40	45P	55.88	57.15
21P	25.40	26.67	46P	57.15	58.42
22P	26.67	27.94	47P	58.42	59.69
23P	27.94	29.21	48P	59.69	60.96
24P	29.21	30.48	49P	60.96	62.23
25P	30.48	31.75	50P	62.23	63.50
26P	31.75	33.02			

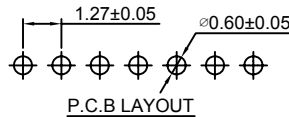
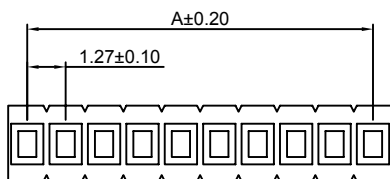
Unit: mm

A1276HWV-XP-H85-Y

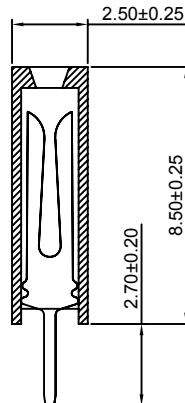
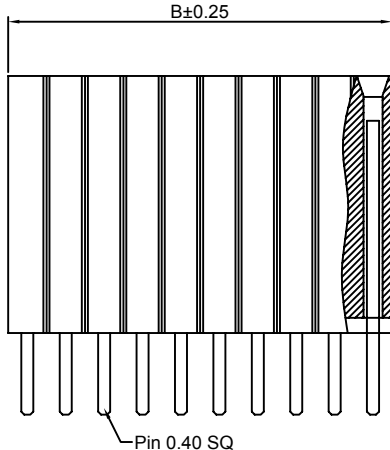
1.27mm Pitch 180° Single Row Female Header

Reference Informations:

- *Material: Pin: Phosphor Bronze/Gold over Nickel
Insulator: Nylon 6T, UL94V-0
- *Mates with CJT A1276 series Single Row Pin Header
Optional Gold plating available but MOQ requested
- *Color: Black



- Ordering Information:
A1276HWV-XP-H85-Y - *** - ***
1. Part No.
2. Material:
(Blank): Nylon 6T, UL94V-0
GWT: Nylon 6T, UL94V-0, GWT 750 °C
3. Finish:
(blank): Gold-flash
G15: 15µm (0.38µm) MIN. Select Gold (Mating Area)
100µm (2.54µm) MIN. Select Tin
G30: 30µm (0.76µm) MIN. Select Gold (Mating Area)
100µm (2.54µm) MIN. Select Tin
T: Tin over Nickel



Ordering Information & Dimensions:

PART NO.	Dimensions		PART NO.	Dimensions	
	A	B		A	B
2P	1.27	2.54	27P	33.02	34.29
3P	2.54	3.81	28P	34.29	35.56
4P	3.81	5.08	29P	35.56	36.83
5P	5.08	6.35	30P	36.83	38.10
6P	6.35	7.62	31P	38.10	39.37
7P	7.62	8.89	32P	39.37	40.64
8P	8.89	10.16	33P	40.64	41.91
9P	10.16	11.43	34P	41.91	43.18
10P	11.43	12.70	35P	43.18	44.45
11P	12.70	13.97	36P	44.45	45.72
12P	13.97	15.24	37P	45.72	46.99
13P	15.24	16.51	38P	46.99	48.26
14P	16.51	17.78	39P	48.26	49.53
15P	17.78	19.05	40P	49.53	50.80
16P	19.05	20.32	41P	50.80	52.07
17P	20.32	21.59	42P	52.07	53.34
18P	21.59	22.86	43P	53.34	54.61
19P	22.86	24.13	44P	54.61	55.88
20P	24.13	25.40	45P	55.88	57.15
21P	25.40	26.67	46P	57.15	58.42
22P	26.67	27.94	47P	58.42	59.69
23P	27.94	29.21	48P	59.69	60.96
24P	29.21	30.48	49P	60.96	62.23
25P	30.48	31.75	50P	62.23	63.50
26P	31.75	33.02			

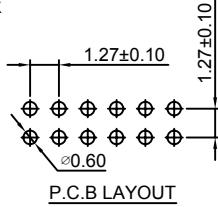
Unit: mm

A1276HWV-2xXP

1.27mm Pitch 180° Dual Row Female Header

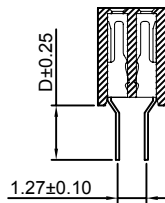
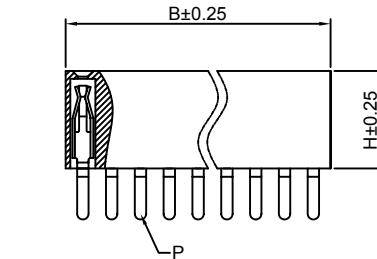
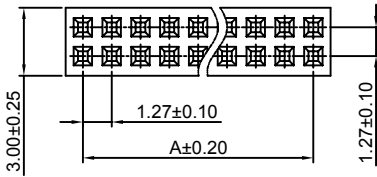
Reference Informations:

- *Material:Pin:Phosphor Bronze/Gold over Nickel
Insulator:Nylon 6T,UL94V-0
- *Mates with CJT A1276 series Dual Row Pin Header
Optional Gold plating available but MOQ requested
- *Color:Black



Ordering Information:
A1276HWV-2xXP - *** - *** - *** - ***
1 2 3 4 5

- 1.Part No.
- 2.Size(H):
(blank):4.30mm(P:Pin 0.50x0.15)
H34:3.40mm(P:Pin 0.50x0.15)
H20:2.00mm(P:Pin 0.40x0.15)
- 3.Size(D):
(blank):2.40mm
D18:1.80mm
- 4.Material:
(Blank):Nylon 6T,UL94V-0
GWT:Nylon 6T,UL94V-0,GWT 750 °C
- 5.Finish:
(blank):Gold-flash
G15:15µin (0.38µm) MIN.Select Gold(Mating Area)
100µin (2.54µm) MIN.Select Tin
G30:30µin (0.76µm) MIN.Select Gold(Mating Area)
100µin (2.54µm) MIN.Select Tin
I: Tin over Nickel



Ordering Information & Dimensions:

PART NO.	Dimensions		PART NO.	Dimensions	
	A	B		A	B
2x2P	1.27	2.94	2x27P	33.02	34.69
2x3P	2.54	4.21	2x28P	34.29	35.96
2x4P	3.81	5.48	2x29P	35.56	37.23
2x5P	5.08	6.75	2x30P	36.83	38.50
2x6P	6.35	8.02	2x31P	38.10	39.77
2x7P	7.62	9.29	2x32P	39.37	41.04
2x8P	8.89	10.56	2x33P	40.64	42.31
2x9P	10.16	11.83	2x34P	41.91	43.58
2x10P	11.43	13.10	2x35P	43.18	44.85
2x11P	12.70	14.37	2x36P	44.45	46.12
2x12P	13.97	15.64	2x37P	45.72	47.39
2x13P	15.24	16.91	2x38P	46.99	48.66
2x14P	16.51	18.18	2x39P	48.26	49.93
2x15P	17.78	19.45	2x40P	49.53	51.20
2x16P	19.05	20.72	2x41P	50.80	52.47
2x17P	20.32	21.99	2x42P	52.07	53.74
2x18P	21.59	23.26	2x43P	53.34	55.01
2x19P	22.86	24.53	2x44P	54.61	56.28
2x20P	24.13	25.80	2x45P	55.88	57.55
2x21P	25.40	27.07	2x46P	57.15	58.82
2x22P	26.67	28.34	2x47P	58.42	60.09
2x23P	27.94	29.61	2x48P	59.69	61.36
2x24P	29.21	30.88	2x49P	60.96	62.63
2x25P	30.48	32.15	2x50P	62.23	63.90
2x26P	31.75	33.42			

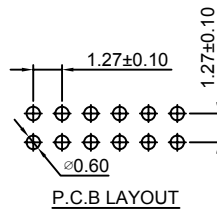
Unit: mm

A1276HWR-2xXP

1.27mm Pitch 90° Dual Row Female Header

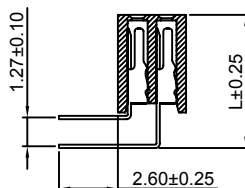
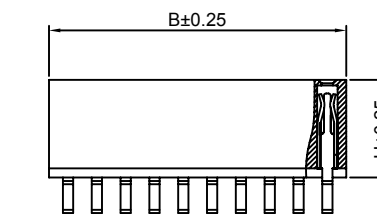
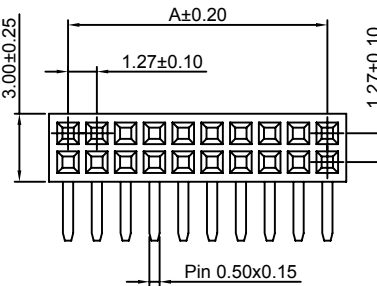
Reference Informations:

- *Material:Pin:Phosphor Bronze/Gold over Nickel
Insulator:Nylon 6T,UL94V-0
- *Mates with CJT A1276 series Dual Row Pin Header
Optional Gold plating available but MOQ requested
- *Color:Black



Ordering Information:
A1276HWR-2xXP - *** - *** - *** - ***
1 2 3 4 5

- 1.Part No.
- 2.Size(H):
(blank):4.30mm
H34:3.40mm
- 3.Size(L):
(blank):5.90mm
L56:5.60mm
- 4.Material:
(Blank):Nylon 6T,UL94V-0
GWT:Nylon 6T,UL94V-0,GWT 750 °C
- 5.Finish:
(blank):Gold-flash
G15:15µin (0.38µm) MIN.Select Gold(Mating Area)
100µin (2.54µm) MIN.Select Tin
G30:30µin (0.76µm) MIN.Select Gold(Mating Area)
100µin (2.54µm) MIN.Select Tin
I: Tin over Nickel



Ordering Information & Dimensions:

PART NO.	Dimensions		PART NO.	Dimensions	
	A	B		A	B
2x2P	1.27	2.94	2x27P	33.02	34.69
2x3P	2.54	4.21	2x28P	34.29	35.96
2x4P	3.81	5.48	2x29P	35.56	37.23
2x5P	5.08	6.75	2x30P	36.83	38.50
2x6P	6.35	8.02	2x31P	38.10	39.77
2x7P	7.62	9.29	2x32P	39.37	41.04
2x8P	8.89	10.56	2x33P	40.64	42.31
2x9P	10.16	11.83	2x34P	41.91	43.58
2x10P	11.43	13.10	2x35P	43.18	44.85
2x11P	12.70	14.37	2x36P	44.45	46.12
2x12P	13.97	15.64	2x37P	45.72	47.39
2x13P	15.24	16.91	2x38P	46.99	48.66
2x14P	16.51	18.18	2x39P	48.26	49.93
2x15P	17.78	19.45	2x40P	49.53	51.20
2x16P	19.05	20.72	2x41P	50.80	52.47
2x17P	20.32	21.99	2x42P	52.07	53.74
2x18P	21.59	23.26	2x43P	53.34	55.01
2x19P	22.86	24.53	2x44P	54.61	56.28
2x20P	24.13	25.80	2x45P	55.88	57.55
2x21P	25.40	27.07	2x46P	57.15	58.82
2x22P	26.67	28.34	2x47P	58.42	60.09
2x23P	27.94	29.61	2x48P	59.69	61.36
2x24P	29.21	30.88	2x49P	60.96	62.63
2x25P	30.48	32.15	2x50P	62.23	63.90
2x26P	31.75	33.42			

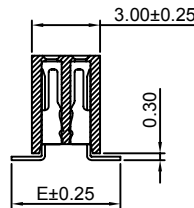
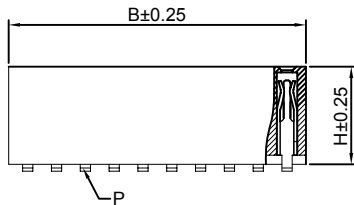
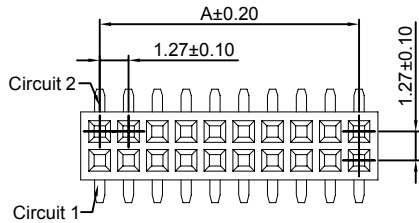
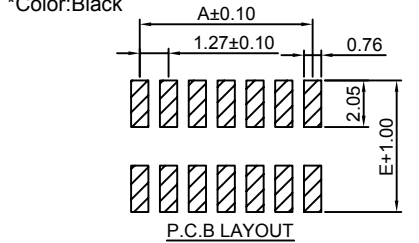
Unit: mm

A1276HWW-S-2xXP

1.27mm Pitch 180° Dual Row Female Header - SMT TYPE

Reference Informations:

- *Material:Pin:Phosphor Bronze/Gold over Nickel
Insulator:Nylon6T,UL94V-0
- *Mates with CJT A1276 series Dual Row Pin Header
Optional Gold plating available but MOQ requested
- *Color:Black



Ordering Information:
A1276HWW-S-2xXP - *** - *** - *** - ***
1 2 3 4 5

- Part No.
- Size(H):
(blank):4.30mm(P:Pin 0.50x0.15)
H34:3.40mm(P:Pin 0.50x0.15)
H20:2.00mm(P:Pin 0.40x0.15)
- Size(E):
(blank):4.80mm
E50:5.00mm
E45:4.50mm
- Material:
(blank):Nylon 6T,UL94V-0
9T:Nylon 9T,UL94V-0
GWT:Nylon 6T,UL94V-0,GWT 750 °C
- Finish:
(blank):Gold-flash
G15:15µin (0.38µm) MIN.Select Gold(Mating Area)
100µin (2.54µm) MIN.Select Tin
G30:30µin (0.76µm) MIN.Select Gold(Mating Area)
100µin (2.54µm) MIN.Select Tin
T: Tin over Nickel

Ordering Information & Dimensions:

PART NO.	Dimensions		PART NO.	Dimensions	
	A	B		A	B
2x2P	1.27	2.94	2x27P	33.02	34.69
2x3P	2.54	4.21	2x28P	34.29	35.96
2x4P	3.81	5.48	2x29P	35.56	37.23
2x5P	5.08	6.75	2x30P	36.83	38.50
2x6P	6.35	8.02	2x31P	38.10	39.77
2x7P	7.62	9.29	2x32P	39.37	41.04
2x8P	8.89	10.56	2x33P	40.64	42.31
2x9P	10.16	11.83	2x34P	41.91	43.58
2x10P	11.43	13.10	2x35P	43.18	44.85
2x11P	12.70	14.37	2x36P	44.45	46.12
2x12P	13.97	15.64	2x37P	45.72	47.39
2x13P	15.24	16.91	2x38P	46.99	48.66
2x14P	16.51	18.18	2x39P	48.26	49.93
2x15P	17.78	19.45	2x40P	49.53	51.20
2x16P	19.05	20.72	2x41P	50.80	52.47
2x17P	20.32	21.99	2x42P	52.07	53.74
2x18P	21.59	23.26	2x43P	53.34	55.01
2x19P	22.86	24.53	2x44P	54.61	56.28
2x20P	24.13	25.80	2x45P	55.88	57.55
2x21P	25.40	27.07	2x46P	57.15	58.82
2x22P	26.67	28.34	2x47P	58.42	60.09
2x23P	27.94	29.61	2x48P	59.69	61.36
2x24P	29.21	30.88	2x49P	60.96	62.63
2x25P	30.48	32.15	2x50P	62.23	63.90
2x26P	31.75	33.42			

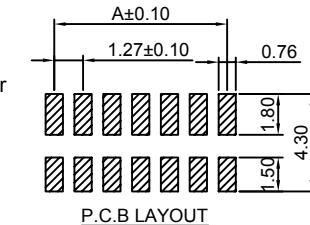
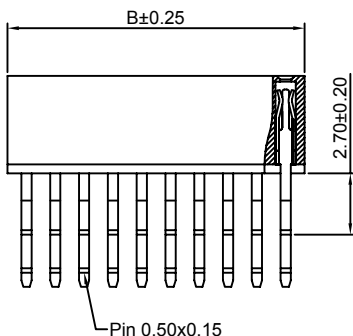
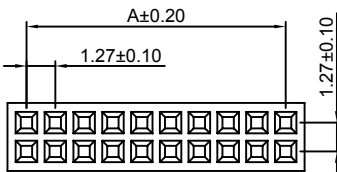
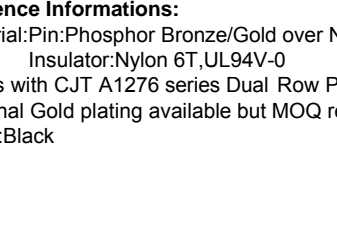
Unit: mm

A1276HWR-S-2xXP

1.27mm Pitch 90° Dual Row Female Header - SMT TYPE

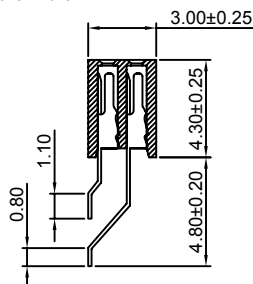
Reference Informations:

- *Material:Pin:Phosphor Bronze/Gold over Nickel
Insulator:Nylon 6T,UL94V-0
- *Mates with CJT A1276 series Dual Row Pin Header
Optional Gold plating available but MOQ requested
- *Color:Black



Ordering Information:
A1276HWR-S-2xXP - *** - ***
1 2 3

- Part No.
- Material:
(Blank):Nylon 6T,UL94V-0
GWT:Nylon 6T,UL94V-0,GWT 750 °C
- Finish:
(blank): Gold-flash
G15:15µin (0.38µm) MIN.Select Gold(Mating Area)
100µin (2.54µm) MIN.Select Tin
G30:30µin (0.76µm) MIN.Select Gold(Mating Area)
100µin (2.54µm) MIN.Select Tin
T: Tin over Nickel



Ordering Information & Dimensions:

PART NO.	Dimensions		PART NO.	Dimensions	
	A	B		A	B
2x2P	1.27	2.94	2x27P	33.02	34.69
2x3P	2.54	4.21	2x28P	34.29	35.96
2x4P	3.81	5.48	2x29P	35.56	37.23
2x5P	5.08	6.75	2x30P	36.83	38.50
2x6P	6.35	8.02	2x31P	38.10	39.77
2x7P	7.62	9.29	2x32P	39.37	41.04
2x8P	8.89	10.56	2x33P	40.64	42.31
2x9P	10.16	11.83	2x34P	41.91	43.58
2x10P	11.43	13.10	2x35P	43.18	44.85
2x11P	12.70	14.37	2x36P	44.45	46.12
2x12P	13.97	15.64	2x37P	45.72	47.39
2x13P	15.24	16.91	2x38P	46.99	48.66
2x14P	16.51	18.18	2x39P	48.26	49.93
2x15P	17.78	19.45	2x40P	49.53	51.20
2x16P	19.05	20.72	2x41P	50.80	52.47
2x17P	20.32	21.99	2x42P	52.07	53.74
2x18P	21.59	23.26	2x43P	53.34	55.01
2x19P	22.86	24.53	2x44P	54.61	56.28
2x20P	24.13	25.80	2x45P	55.88	57.55
2x21P	25.40	27.07	2x46P	57.15	58.82
2x22P	26.67	28.34	2x47P	58.42	60.09
2x23P	27.94	29.61	2x48P	59.69	61.36
2x24P	29.21	30.88	2x49P	60.96	62.63
2x25P	30.48	32.15	2x50P	62.23	63.90
2x26P	31.75	33.42			

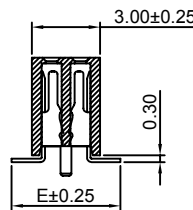
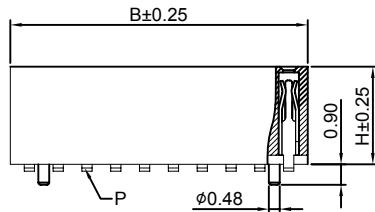
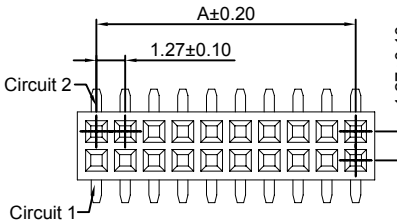
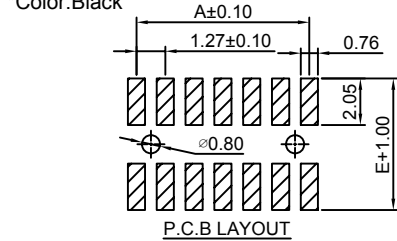
Unit: mm

A1276HWV-S-F-2xXP

1.27mm Pitch 180° Dual Row Female Header - SMT TYPE

Reference Informations:

- *Material:Pin:Phosphor Bronze/Gold over Nickel
Insulator:Nylon 6T,UL94V-0
- *Mates with CJT A1276 series Dual Row Pin Header
Optional Gold plating available but MOQ requested
- *Color:Black



Ordering Information:
A1276HWV-S-F-2xXP - *** - *** - *** - ***
1 2 3 4 5

- 1.Part No.
- 2.Size(H):
(blank):4.30mm(P:Pin 0.50x0.15)
H34:3.40mm(P:Pin 0.50x0.15)
H20:2.00mm(P:Pin 0.40x0.15)
- 3.Size(E):
(blank):4.80mm
E50:5.00mm
E45:4.50mm
- 4.Material:
(blank):Nylon 6T,UL94V-0
9T:Nylon 9T,UL94V-0
GWT:Nylon 6T,UL94V-0,GWT 750 °C
- 5.Finish:
(blank):Gold-flash
G15:15µin (0.38µm) MIN.Select Gold(Mating Area)
100µin (2.54µm) MIN.Select Tin
G30:30µin (0.76µm) MIN.Select Gold(Mating Area)
100µin (2.54µm) MIN.Select Tin
T: Tin over Nickel

Ordering Information & Dimensions:

PART NO.	Dimensions		PART NO.	Dimensions	
	A	B		A	B
2x2P	1.27	2.94	2x27P	33.02	34.69
2x3P	2.54	4.21	2x28P	34.29	35.96
2x4P	3.81	5.48	2x29P	35.56	37.23
2x5P	5.08	6.75	2x30P	36.83	38.50
2x6P	6.35	8.02	2x31P	38.10	39.77
2x7P	7.62	9.29	2x32P	39.37	41.04
2x8P	8.89	10.56	2x33P	40.64	42.31
2x9P	10.16	11.83	2x34P	41.91	43.58
2x10P	11.43	13.10	2x35P	43.18	44.85
2x11P	12.70	14.37	2x36P	44.45	46.12
2x12P	13.97	15.64	2x37P	45.72	47.39
2x13P	15.24	16.91	2x38P	46.99	48.66
2x14P	16.51	18.18	2x39P	48.26	49.93
2x15P	17.78	19.45	2x40P	49.53	51.20
2x16P	19.05	20.72	2x41P	50.80	52.47
2x17P	20.32	21.99	2x42P	52.07	53.74
2x18P	21.59	23.26	2x43P	53.34	55.01
2x19P	22.86	24.53	2x44P	54.61	56.28
2x20P	24.13	25.80	2x45P	55.88	57.55
2x21P	25.40	27.07	2x46P	57.15	58.82
2x22P	26.67	28.34	2x47P	58.42	60.09
2x23P	27.94	29.61	2x48P	59.69	61.36
2x24P	29.21	30.88	2x49P	60.96	62.63
2x25P	30.48	32.15	2x50P	62.23	63.90
2x26P	31.75	33.42			

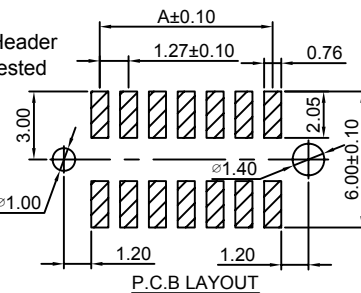
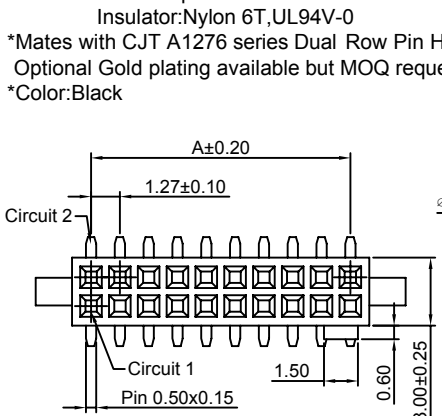
Unit: mm

A1276HWV-S-F1-2xXP

1.27mm Pitch 180° Dual Row Female Header - SMT TYPE

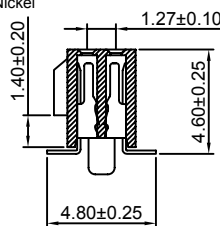
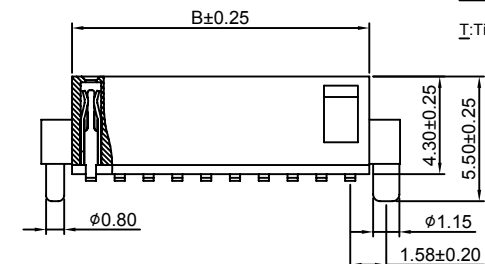
Reference Informations:

- *Material:Pin:Phosphor Bronze/Gold over Nickel
Insulator:Nylon 6T,UL94V-0
- *Mates with CJT A1276 series Dual Row Pin Header
Optional Gold plating available but MOQ requested
- *Color:Black



Ordering Information:
A1276HWV-S-F1-2xXP - *** - ***
1 2 3

- 1.Part No.
- 2.Material:
(Blank):Nylon 6T,UL94V-0
GWT:Nylon 6T,UL94V-0 GWT 750 °C
- 3.Finish:
(blank):Gold-flash
G15:15µin (0.38µm) MIN.Select Gold(Mating Area)
100µin (2.54µm) MIN.Select Tin
G30:30µin (0.76µm) MIN.Select Gold(Mating Area)
100µin (2.54µm) MIN.Select Tin
T: Tin over Nickel



Ordering Information & Dimensions:

PART NO.	Dimensions		PART NO.	Dimensions	
	A	B		A	B
2x2P	1.27	2.94	2x27P	33.02	34.69
2x3P	2.54	4.21	2x28P	34.29	35.96
2x4P	3.81	5.48	2x29P	35.56	37.23
2x5P	5.08	6.75	2x30P	36.83	38.50
2x6P	6.35	8.02	2x31P	38.10	39.77
2x7P	7.62	9.29	2x32P	39.37	41.04
2x8P	8.89	10.56	2x33P	40.64	42.31
2x9P	10.16	11.83	2x34P	41.91	43.58
2x10P	11.43	13.10	2x35P	43.18	44.85
2x11P	12.70	14.37	2x36P	44.45	46.12
2x12P	13.97	15.64	2x37P	45.72	47.39
2x13P	15.24	16.91	2x38P	46.99	48.66
2x14P	16.51	18.18	2x39P	48.26	49.93
2x15P	17.78	19.45	2x40P	49.53	51.20
2x16P	19.05	20.72	2x41P	50.80	52.47
2x17P	20.32	21.99	2x42P	52.07	53.74
2x18P	21.59	23.26	2x43P	53.34	55.01
2x19P	22.86	24.53	2x44P	54.61	56.28
2x20P	24.13	25.80	2x45P	55.88	57.55
2x21P	25.40	27.07	2x46P	57.15	58.82
2x22P	26.67	28.34	2x47P	58.42	60.09
2x23P	27.94	29.61	2x48P	59.69	61.36
2x24P	29.21	30.88	2x49P	60.96	62.63
2x25P	30.48	32.15	2x50P	62.23	63.90
2x26P	31.75	33.42			

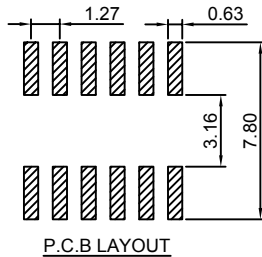
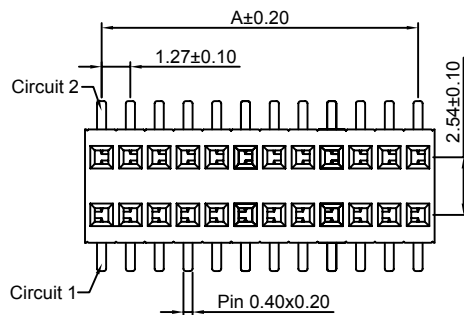
Unit: mm

A1276HWVA-S-2xXP-H57

1.27x2.54mm Pitch 180° Dual Row Female Header - SMT TYPE

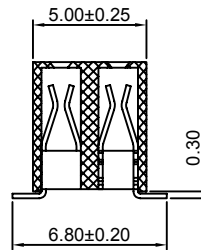
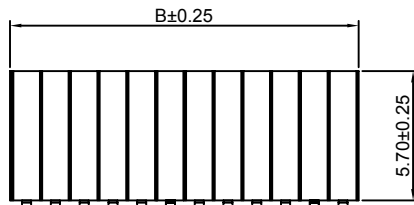
Reference Informations:

- *Material: Pin: Phosphor Bronze/Gold over Nickel
Insulator: Nylon 6T, UL94V-0
- *Mates with CJT A1276 series Dual Row Pin Header
Optional Gold plating available but MOQ requested
- *Color: Black



Ordering Information:
A1276HWVA-S-2xXP-H57 - *** - ***
1 2 3

1. Part No.
2. Material:
(Blank): Nylon 6T, UL94V-0
GWT: Nylon 6T, UL94V-0, GWT 750 °C
3. Finish:
(blank): Gold-flash
G15: 15µm (0.38µm) MIN. Select Gold (Mating Area)
100µm (2.54µm) MIN. Select Tin
G30: 30µm (0.76µm) MIN. Select Gold (Mating Area)
100µm (2.54µm) MIN. Select Tin
T: Tin over Nickel



Ordering Information & Dimensions:

PART NO.	Dimensions		PART NO.	Dimensions	
	A	B		A	B
2x2P	1.27	2.94	2x27P	33.02	34.69
2x3P	2.54	4.21	2x28P	34.29	35.96
2x4P	3.81	5.48	2x29P	35.56	37.23
2x5P	5.08	6.75	2x30P	36.83	38.50
2x6P	6.35	8.02	2x31P	38.10	39.77
2x7P	7.62	9.29	2x32P	39.37	41.04
2x8P	8.89	10.56	2x33P	40.64	42.31
2x9P	10.16	11.83	2x34P	41.91	43.58
2x10P	11.43	13.10	2x35P	43.18	44.85
2x11P	12.70	14.37	2x36P	44.45	46.12
2x12P	13.97	15.64	2x37P	45.72	47.39
2x13P	15.24	16.91	2x38P	46.99	48.66
2x14P	16.51	18.18	2x39P	48.26	49.93
2x15P	17.78	19.45	2x40P	49.53	51.20
2x16P	19.05	20.72	2x41P	50.80	52.47
2x17P	20.32	21.99	2x42P	52.07	53.74
2x18P	21.59	23.26	2x43P	53.34	55.01
2x19P	22.86	24.53	2x44P	54.61	56.28
2x20P	24.13	25.80	2x45P	55.88	57.55
2x21P	25.40	27.07	2x46P	57.15	58.82
2x22P	26.67	28.34	2x47P	58.42	60.09
2x23P	27.94	29.61	2x48P	59.69	61.36
2x24P	29.21	30.88	2x49P	60.96	62.63
2x25P	30.48	32.15	2x50P	62.23	63.90
2x26P	31.75	33.42			

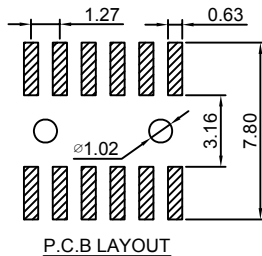
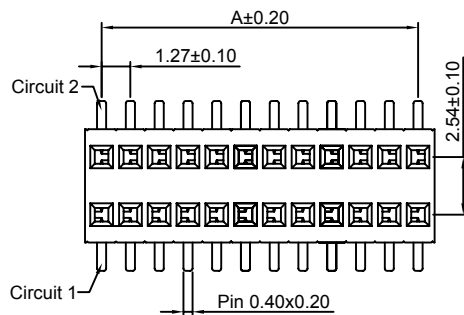
Unit: mm

A1276HWVA-S-F-2xXP-H57

1.27x2.54mm Pitch 180° Dual Row Female Header - SMT TYPE

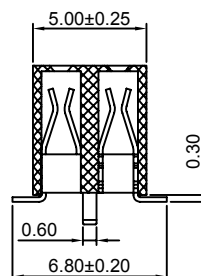
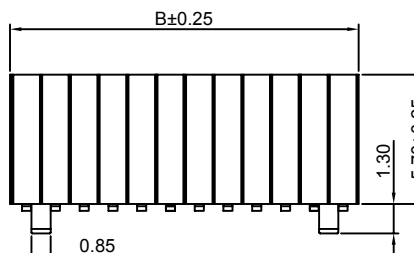
Reference Informations:

- *Material: Pin: Phosphor Bronze/Gold over Nickel
Insulator: Nylon 6T, UL94V-0
- *Mates with CJT A1276 series Dual Row Pin Header
Optional Gold plating available but MOQ requested
- *Color: Black



Ordering Information:
A1276HWVA-S-F-2xXP-H57 - *** - ***
1 2 3

1. Part No.
2. Material:
(Blank): Nylon 6T, UL94V-0
GWT: Nylon 6T, UL94V-0, GWT 750 °C
3. Finish:
(blank): Gold-flash
G15: 15µm (0.38µm) MIN. Select Gold (Mating Area)
100µm (2.54µm) MIN. Select Tin
G30: 30µm (0.76µm) MIN. Select Gold (Mating Area)
100µm (2.54µm) MIN. Select Tin
T: Tin over Nickel



Ordering Information & Dimensions:

PART NO.	Dimensions		PART NO.	Dimensions	
	A	B		A	B
2x2P	1.27	2.94	2x27P	33.02	34.69
2x3P	2.54	4.21	2x28P	34.29	35.96
2x4P	3.81	5.48	2x29P	35.56	37.23
2x5P	5.08	6.75	2x30P	36.83	38.50
2x6P	6.35	8.02	2x31P	38.10	39.77
2x7P	7.62	9.29	2x32P	39.37	41.04
2x8P	8.89	10.56	2x33P	40.64	42.31
2x9P	10.16	11.83	2x34P	41.91	43.58
2x10P	11.43	13.10	2x35P	43.18	44.85
2x11P	12.70	14.37	2x36P	44.45	46.12
2x12P	13.97	15.64	2x37P	45.72	47.39
2x13P	15.24	16.91	2x38P	46.99	48.66
2x14P	16.51	18.18	2x39P	48.26	49.93
2x15P	17.78	19.45	2x40P	49.53	51.20
2x16P	19.05	20.72	2x41P	50.80	52.47
2x17P	20.32	21.99	2x42P	52.07	53.74
2x18P	21.59	23.26	2x43P	53.34	55.01
2x19P	22.86	24.53	2x44P	54.61	56.28
2x20P	24.13	25.80	2x45P	55.88	57.55
2x21P	25.40	27.07	2x46P	57.15	58.82
2x22P	26.67	28.34	2x47P	58.42	60.09
2x23P	27.94	29.61	2x48P	59.69	61.36
2x24P	29.21	30.88	2x49P	60.96	62.63
2x25P	30.48	32.15	2x50P	62.23	63.90
2x26P	31.75	33.42			

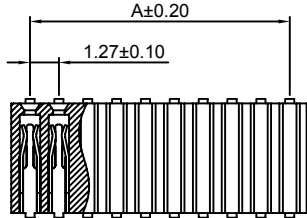
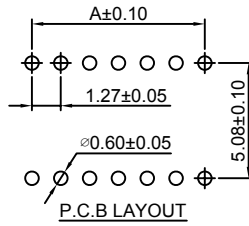
Unit: mm

A1276HWRA-2xXP

1.27mm Pitch 90° Dual Row Female Header

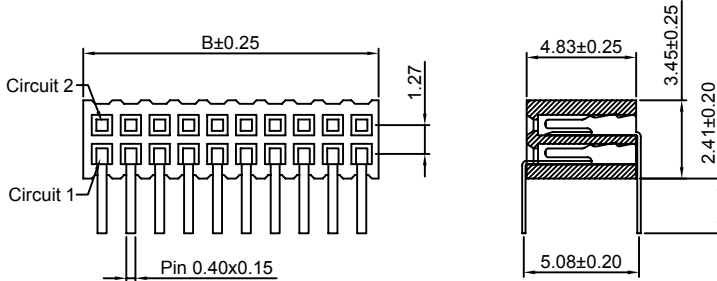
Reference Informations:

- *Material:Pin:Phosphor Bronze/Gold over Nickel
Insulator:Nylon 6T,UL94V-0
- *Mates with CJT A1276 series Dual Row Pin Header
Optional Gold plating available but MOQ requested
- *Color:Black



Ordering Information:
A1276HWRA-2xXP - *** - ***
1 2 3

- Part No.
- Material:
(Blank):Nylon 6T,UL94V-0
GWT:Nylon 6T,UL94V-0,GWT 750 °C
- Finish:
(blank):Gold-flash
G15:15µin (0.38µm) MIN.Select Gold(Mating Area)
100µin (2.54µm) MIN.Select Tin
G30:30µin (0.76µm) MIN.Select Gold(Mating Area)
100µin (2.54µm) MIN.Select Tin
T: Tin over Nickel



Ordering Information & Dimensions:

PART NO.	Dimensions		PART NO.	Dimensions	
	A	B		A	B
2x2P	1.27	2.84	2x27P	33.02	34.59
2x3P	2.54	4.11	2x28P	34.29	35.86
2x4P	3.81	5.38	2x29P	35.56	37.13
2x5P	5.08	6.65	2x30P	36.83	38.40
2x6P	6.35	7.92	2x31P	38.10	39.67
2x7P	7.62	9.19	2x32P	39.37	40.94
2x8P	8.89	10.46	2x33P	40.64	42.21
2x9P	10.16	11.73	2x34P	41.91	43.48
2x10P	11.43	13.00	2x35P	43.18	44.75
2x11P	12.70	14.27	2x36P	44.45	46.02
2x12P	13.97	15.54	2x37P	45.72	47.29
2x13P	15.24	16.81	2x38P	46.99	48.56
2x14P	16.51	18.08	2x39P	48.26	49.83
2x15P	17.78	19.35	2x40P	49.53	51.10
2x16P	19.05	20.62	2x41P	50.80	52.37
2x17P	20.32	21.89	2x42P	52.07	53.64
2x18P	21.59	23.16	2x43P	53.34	54.91
2x19P	22.86	24.43	2x44P	54.61	56.18
2x20P	24.13	25.70	2x45P	55.88	57.45
2x21P	25.40	26.97	2x46P	57.15	58.72
2x22P	26.67	28.24	2x47P	58.42	59.99
2x23P	27.94	29.51	2x48P	59.69	61.26
2x24P	29.21	30.78	2x49P	60.96	62.53
2x25P	30.48	32.05	2x50P	62.23	63.80
2x26P	31.75	33.32			

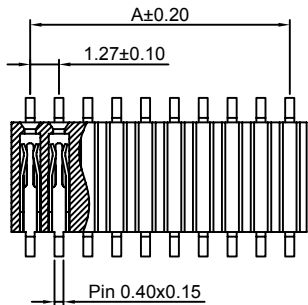
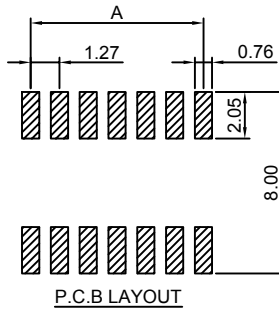
Unit: mm

A1276HWRA-S-2xXP

1.27mm Pitch 90° Dual Row Female Header - SMT TYPE

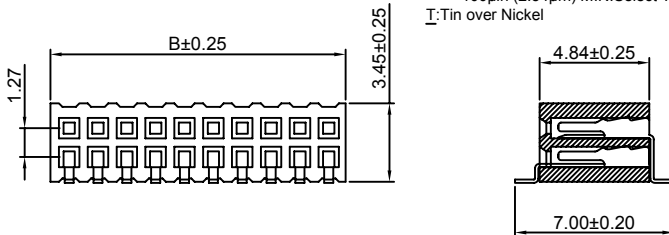
Reference Informations:

- *Material:Pin:Phosphor Bronze/Gold over Nickel
Insulator:Nylon 6T,UL94V-0
- *Mates with CJT A1276 series Dual Row Pin Header
Optional Gold plating available but MOQ requested
- *Color:Black



Ordering Information:
A1276HWRA-S-2xXP - *** - ***
1 2 3

- Part No.
- Material:
(Blank):Nylon 6T,UL94V-0
GWT:Nylon 6T,UL94V-0,GWT 750 °C
- Finish:
(blank):Gold-flash
G15:15µin (0.38µm) MIN.Select Gold(Mating Area)
100µin (2.54µm) MIN.Select Tin
G30:30µin (0.76µm) MIN.Select Gold(Mating Area)
100µin (2.54µm) MIN.Select Tin
T: Tin over Nickel



Ordering Information & Dimensions:

PART NO.	Dimensions		PART NO.	Dimensions	
	A	B		A	B
2x2P	1.27	2.84	2x27P	33.02	34.59
2x3P	2.54	4.11	2x28P	34.29	35.86
2x4P	3.81	5.38	2x29P	35.56	37.13
2x5P	5.08	6.65	2x30P	36.83	38.40
2x6P	6.35	7.92	2x31P	38.10	39.67
2x7P	7.62	9.19	2x32P	39.37	40.94
2x8P	8.89	10.46	2x33P	40.64	42.21
2x9P	10.16	11.73	2x34P	41.91	43.48
2x10P	11.43	13.00	2x35P	43.18	44.75
2x11P	12.70	14.27	2x36P	44.45	46.02
2x12P	13.97	15.54	2x37P	45.72	47.29
2x13P	15.24	16.81	2x38P	46.99	48.56
2x14P	16.51	18.08	2x39P	48.26	49.83
2x15P	17.78	19.35	2x40P	49.53	51.10
2x16P	19.05	20.62	2x41P	50.80	52.37
2x17P	20.32	21.89	2x42P	52.07	53.64
2x18P	21.59	23.16	2x43P	53.34	54.91
2x19P	22.86	24.43	2x44P	54.61	56.18
2x20P	24.13	25.70	2x45P	55.88	57.45
2x21P	25.40	26.97	2x46P	57.15	58.72
2x22P	26.67	28.24	2x47P	58.42	59.99
2x23P	27.94	29.51	2x48P	59.69	61.26
2x24P	29.21	30.78	2x49P	60.96	62.53
2x25P	30.48	32.05	2x50P	62.23	63.80
2x26P	31.75	33.32			

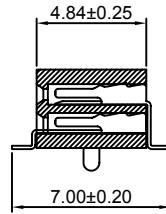
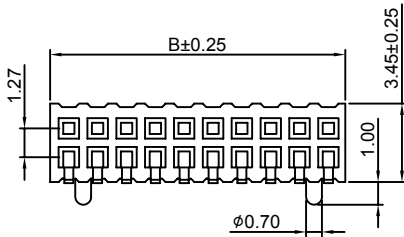
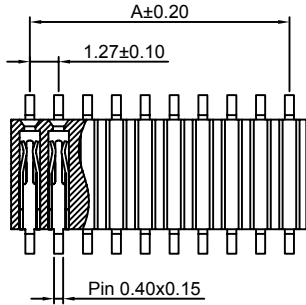
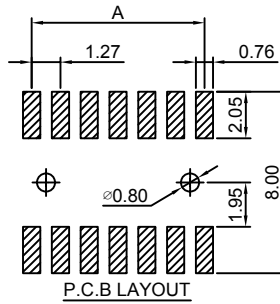
Unit: mm

A1276HWRA-S-F-2xXP

1.27mm Pitch 90° Dual Row Female Header - SMT TYPE

Reference Informations:

- *Material: Pin: Phosphor Bronze/Gold over Nickel
Insulator: Nylon 6T, UL94V-0
- *Mates with CJT A1276 series Dual Row Pin Header
Optional Gold plating available but MOQ requested
- *Color: Black



Ordering Information:

A1276HWRA-S-F-2xXP - *** - ***
1 2 3

1. Part No.
2. Material:
(Blank): Nylon 6T, UL94V-0
GWT: Nylon 6T, UL94V-0, GWT 750 °C
3. Finish:
(blank): Gold-flash
G15: 15µin (0.38µm) MIN. Select Gold (Mating Area)
100µin (2.54µm) MIN. Select Tin
G30: 30µin (0.76µm) MIN. Select Gold (Mating Area)
100µin (2.54µm) MIN. Select Tin
I: Tin over Nickel

Ordering Information & Dimensions:

PART NO.	Dimensions		PART NO.	Dimensions	
	A	B		A	B
2x2P	1.27	2.84	2x27P	33.02	34.59
2x3P	2.54	4.11	2x28P	34.29	35.86
2x4P	3.81	5.38	2x29P	35.56	37.13
2x5P	5.08	6.65	2x30P	36.83	38.40
2x6P	6.35	7.92	2x31P	38.10	39.67
2x7P	7.62	9.19	2x32P	39.37	40.94
2x8P	8.89	10.46	2x33P	40.64	42.21
2x9P	10.16	11.73	2x34P	41.91	43.48
2x10P	11.43	13.00	2x35P	43.18	44.75
2x11P	12.70	14.27	2x36P	44.45	46.02
2x12P	13.97	15.54	2x37P	45.72	47.29
2x13P	15.24	16.81	2x38P	46.99	48.56
2x14P	16.51	18.08	2x39P	48.26	49.83
2x15P	17.78	19.35	2x40P	49.53	51.10
2x16P	19.05	20.62	2x41P	50.80	52.37
2x17P	20.32	21.89	2x42P	52.07	53.64
2x18P	21.59	23.16	2x43P	53.34	54.91
2x19P	22.86	24.43	2x44P	54.61	56.18
2x20P	24.13	25.70	2x45P	55.88	57.45
2x21P	25.40	26.97	2x46P	57.15	58.72
2x22P	26.67	28.24	2x47P	58.42	59.99
2x23P	27.94	29.51	2x48P	59.69	61.26
2x24P	29.21	30.78	2x49P	60.96	62.53
2x25P	30.48	32.05	2x50P	62.23	63.80
2x26P	31.75	33.32			

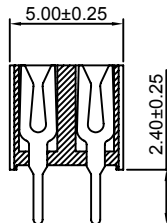
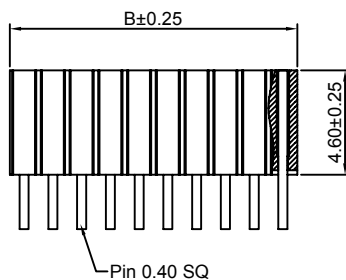
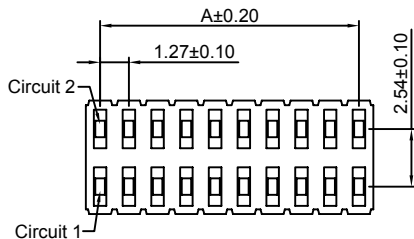
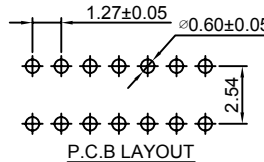
Unit: mm

A1276HWV-2xXP-H46-Y

1.27x2.54mm Pitch 180° Dual Row Female Header

Reference Informations:

- *Material: Pin: Phosphor Bronze/Gold over Nickel
Insulator: Nylon 6T, UL94V-0
- *Mates with CJT A1276 series Dual Row Pin Header
Optional Gold plating available but MOQ requested
- *Color: Black



Ordering Information:

A1276HWV-2xXP-H46-Y - *** - ***
1 2 3

1. Part No.
2. Material:
(Blank): Nylon 6T, UL94V-0
GWT: Nylon 6T, UL94V-0, GWT 750 °C
3. Finish:
(blank): Gold-flash
G15: 15µin (0.38µm) MIN. Select Gold (Mating Area)
100µin (2.54µm) MIN. Select Tin
G30: 30µin (0.76µm) MIN. Select Gold (Mating Area)
100µin (2.54µm) MIN. Select Tin
I: Tin over Nickel

Ordering Information & Dimensions:

PART NO.	Dimensions		PART NO.	Dimensions	
	A	B		A	B
2x2P	1.27	2.54	2x27P	33.02	34.29
2x3P	2.54	3.81	2x28P	34.29	35.56
2x4P	3.81	5.08	2x29P	35.56	36.83
2x5P	5.08	6.35	2x30P	36.83	38.10
2x6P	6.35	7.62	2x31P	38.10	39.37
2x7P	7.62	8.89	2x32P	39.37	40.64
2x8P	8.89	10.16	2x33P	40.64	41.91
2x9P	10.16	11.43	2x34P	41.91	43.18
2x10P	11.43	12.70	2x35P	43.18	44.45
2x11P	12.70	13.97	2x36P	44.45	45.72
2x12P	13.97	15.24	2x37P	45.72	46.99
2x13P	15.24	16.51	2x38P	46.99	48.26
2x14P	16.51	17.78	2x39P	48.26	49.53
2x15P	17.78	19.05	2x40P	49.53	50.80
2x16P	19.05	20.32	2x41P	50.80	52.07
2x17P	20.32	21.59	2x42P	52.07	53.34
2x18P	21.59	22.86	2x43P	53.34	54.61
2x19P	22.86	24.13	2x44P	54.61	55.88
2x20P	24.13	25.40	2x45P	55.88	57.15
2x21P	25.40	26.67	2x46P	57.15	58.42
2x22P	26.67	27.94	2x47P	58.42	59.69
2x23P	27.94	29.21	2x48P	59.69	60.96
2x24P	29.21	30.48	2x49P	60.96	62.23
2x25P	30.48	31.75	2x50P	62.23	63.50
2x26P	31.75	33.02			

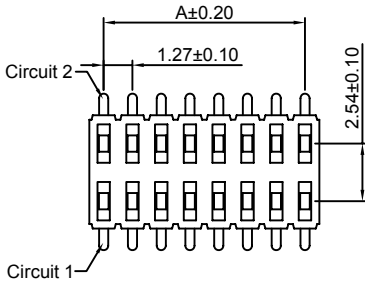
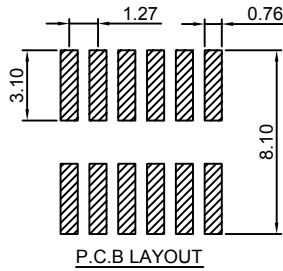
Unit: mm

A1276HWV-S-2xXP-H46-Y

1.27x2.54mm Pitch 180° Dual Row Female Header - SMT TYPE

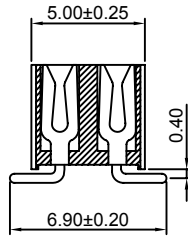
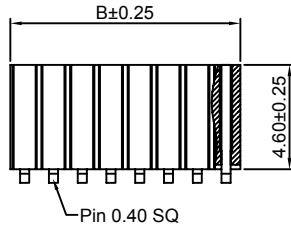
Reference Informations:

- *Material:Pin:Phosphor Bronze/Gold over Nickel
Insulator:Nylon 6T,UL94V-0
- *Mates with CJT A1276 series Dual Row Pin Header
Optional Gold plating available but MOQ requested
- *Color:Black



Ordering Information:
A1276HWV-S-2xXP-H46-Y - *** - ***
1 2 3

- 1.Part No.
- 2.Material:
(Blank):Nylon 6T,UL94V-0
GWT:Nylon 6T,UL94V-0,GWT 750 °C
- 3.Finish:
(blank):Gold-flash
G15:15µin (0.38µm) MIN.Select Gold(Mating Area)
100µin (2.54µm) MIN.Select Tin
G30:30µin (0.76µm) MIN.Select Gold(Mating Area)
100µin (2.54µm) MIN.Select Tin
T:Tin over Nickel



Ordering Information & Dimensions:

PART NO.	Dimensions		PART NO.	Dimensions	
	A	B		A	B
2x2P	1.27	2.54	2x27P	33.02	34.29
2x3P	2.54	3.81	2x28P	34.29	35.56
2x4P	3.81	5.08	2x29P	35.56	36.83
2x5P	5.08	6.35	2x30P	36.83	38.10
2x6P	6.35	7.62	2x31P	38.10	39.37
2x7P	7.62	8.89	2x32P	39.37	40.64
2x8P	8.89	10.16	2x33P	40.64	41.91
2x9P	10.16	11.43	2x34P	41.91	43.18
2x10P	11.43	12.70	2x35P	43.18	44.45
2x11P	12.70	13.97	2x36P	44.45	45.72
2x12P	13.97	15.24	2x37P	45.72	46.99
2x13P	15.24	16.51	2x38P	46.99	48.26
2x14P	16.51	17.78	2x39P	48.26	49.53
2x15P	17.78	19.05	2x40P	49.53	50.80
2x16P	19.05	20.32	2x41P	50.80	52.07
2x17P	20.32	21.59	2x42P	52.07	53.34
2x18P	21.59	22.86	2x43P	53.34	54.61
2x19P	22.86	24.13	2x44P	54.61	55.88
2x20P	24.13	25.40	2x45P	55.88	57.15
2x21P	25.40	26.67	2x46P	57.15	58.42
2x22P	26.67	27.94	2x47P	58.42	59.69
2x23P	27.94	29.21	2x48P	59.69	60.96
2x24P	29.21	30.48	2x49P	60.96	62.23
2x25P	30.48	31.75	2x50P	62.23	63.50
2x26P	31.75	33.02			

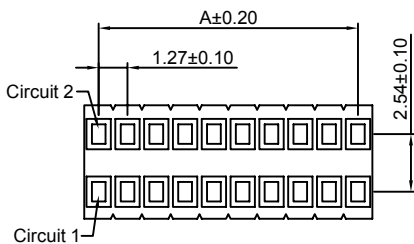
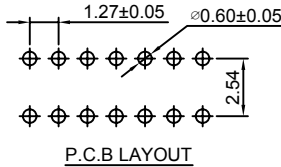
Unit: mm

A1276HWV-2xXP-H85-Y

1.27x2.54mm Pitch 180° Dual Row Female Header

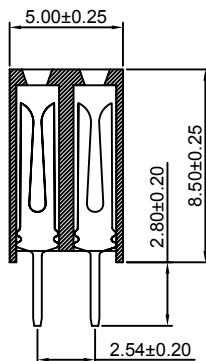
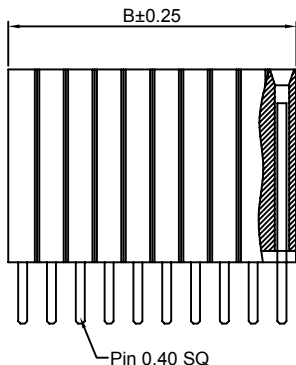
Reference Informations:

- *Material:Pin:Phosphor Bronze/Gold over Nickel
Insulator:Nylon 6T,UL94V-0
- *Mates with CJT A1276 series Dual Row Pin Header
Optional Gold plating available but MOQ requested
- *Color:Black



Ordering Information:
A1276HWV-2xXP-H85-Y - *** - ***
1 2 3

- 1.Part No.
- 2.Material:
(Blank):Nylon 6T,UL94V-0
GWT:Nylon 6T,UL94V-0,GWT 750 °C
- 3.Finish:
(blank):Gold-flash
G15:15µin (0.38µm) MIN.Select Gold(Mating Area)
100µin (2.54µm) MIN.Select Tin
G30:30µin (0.76µm) MIN.Select Gold(Mating Area)
100µin (2.54µm) MIN.Select Tin
T:Tin over Nickel



Ordering Information & Dimensions:

PART NO.	Dimensions		PART NO.	Dimensions	
	A	B		A	B
2x2P	1.27	2.54	2x27P	33.02	34.29
2x3P	2.54	3.81	2x28P	34.29	35.56
2x4P	3.81	5.08	2x29P	35.56	36.83
2x5P	5.08	6.35	2x30P	36.83	38.10
2x6P	6.35	7.62	2x31P	38.10	39.37
2x7P	7.62	8.89	2x32P	39.37	40.64
2x8P	8.89	10.16	2x33P	40.64	41.91
2x9P	10.16	11.43	2x34P	41.91	43.18
2x10P	11.43	12.70	2x35P	43.18	44.45
2x11P	12.70	13.97	2x36P	44.45	45.72
2x12P	13.97	15.24	2x37P	45.72	46.99
2x13P	15.24	16.51	2x38P	46.99	48.26
2x14P	16.51	17.78	2x39P	48.26	49.53
2x15P	17.78	19.05	2x40P	49.53	50.80
2x16P	19.05	20.32	2x41P	50.80	52.07
2x17P	20.32	21.59	2x42P	52.07	53.34
2x18P	21.59	22.86	2x43P	53.34	54.61
2x19P	22.86	24.13	2x44P	54.61	55.88
2x20P	24.13	25.40	2x45P	55.88	57.15
2x21P	25.40	26.67	2x46P	57.15	58.42
2x22P	26.67	27.94	2x47P	58.42	59.69
2x23P	27.94	29.21	2x48P	59.69	60.96
2x24P	29.21	30.48	2x49P	60.96	62.23
2x25P	30.48	31.75	2x50P	62.23	63.50
2x26P	31.75	33.02			

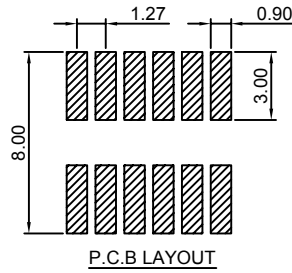
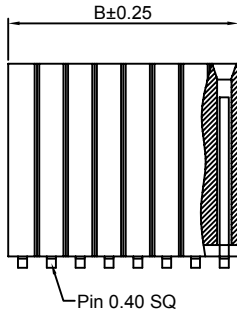
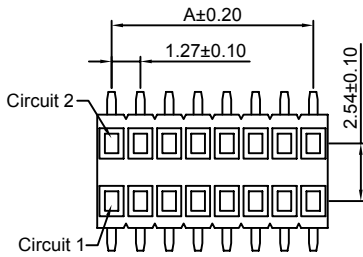
Unit: mm

A1276HWV-S-2xXP-H85-Y

1.27x2.54mm Pitch 180° Dual Row Female Header - SMT TYPE

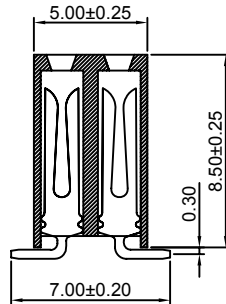
Reference Informations:

- *Material: Pin: Phosphor Bronze/Gold over Nickel
Insulator: Nylon 6T, UL94V-0
- *Mates with CJT A1276 series Dual Row Pin Header
Optional Gold plating available but MOQ requested
- *Color: Black



Ordering Information:
A1276HWV-S-2xXP-H85-Y - *** - ***
1 2 3

1. Part No.
2. Material:
(Blank): Nylon 6T, UL94V-0
GWT: Nylon 6T, UL94V-0, GWT 750 °C
3. Finish:
(blank): Gold-flash
G15: 15µin (0.38µm) MIN. Select Gold (Mating Area)
100µin (2.54µm) MIN. Select Tin
G30: 30µin (0.76µm) MIN. Select Gold (Mating Area)
100µin (2.54µm) MIN. Select Tin
I: Tin over Nickel



Ordering Information & Dimensions:

PART NO.	Dimensions		PART NO.	Dimensions	
	A	B		A	B
2x2P	1.27	2.54	2x27P	33.02	34.29
2x3P	2.54	3.81	2x28P	34.29	35.56
2x4P	3.81	5.08	2x29P	35.56	36.83
2x5P	5.08	6.35	2x30P	36.83	38.10
2x6P	6.35	7.62	2x31P	38.10	39.37
2x7P	7.62	8.89	2x32P	39.37	40.64
2x8P	8.89	10.16	2x33P	40.64	41.91
2x9P	10.16	11.43	2x34P	41.91	43.18
2x10P	11.43	12.70	2x35P	43.18	44.45
2x11P	12.70	13.97	2x36P	44.45	45.72
2x12P	13.97	15.24	2x37P	45.72	46.99
2x13P	15.24	16.51	2x38P	46.99	48.26
2x14P	16.51	17.78	2x39P	48.26	49.53
2x15P	17.78	19.05	2x40P	49.53	50.80
2x16P	19.05	20.32	2x41P	50.80	52.07
2x17P	20.32	21.59	2x42P	52.07	53.34
2x18P	21.59	22.86	2x43P	53.34	54.61
2x19P	22.86	24.13	2x44P	54.61	55.88
2x20P	24.13	25.40	2x45P	55.88	57.15
2x21P	25.40	26.67	2x46P	57.15	58.42
2x22P	26.67	27.94	2x47P	58.42	59.69
2x23P	27.94	29.21	2x48P	59.69	60.96
2x24P	29.21	30.48	2x49P	60.96	62.23
2x25P	30.48	31.75	2x50P	62.23	63.50
2x26P	31.75	33.02			

Unit: mm